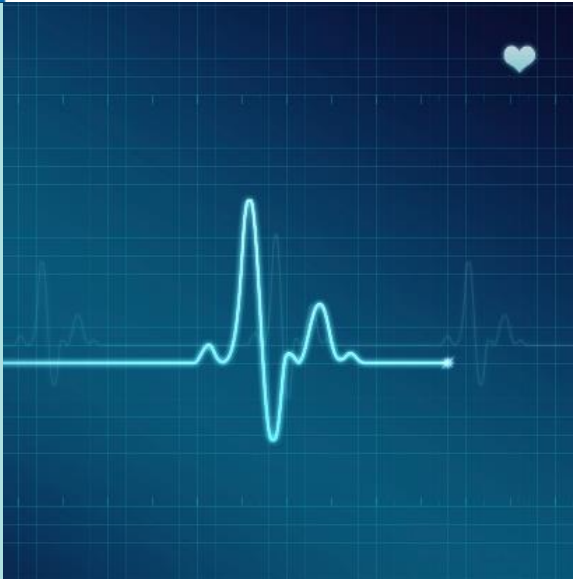
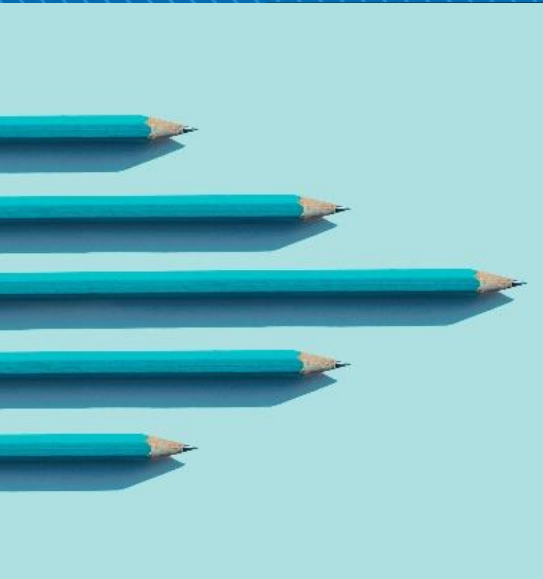


Schooling, Labour Market, Health, and Crime Outcomes of Future to Discover Participants

Final Report



APRIL 2024

Michael Dubois
Reuben Ford
Masashi Miyairi

SRDC Board of Directors

Richard A. Wagner
Former Partner, Norton Rose Fulbright LLP

Tim Aubry, Ph.D.
Professor, School of Psychology
Senior Researcher, Centre for Research on Educational and
Community Services

Gordon Berlin
Past President, MDRC

Gary Birch, Ph.D.
Executive Director, Neil Squire Society

Satya Brink, Ph.D.
International Consultant, Research, Policy Analysis and
Strategic Policy advice
Education, Lifelong Learning and Development

Erica Di Ruggiero, Ph.D.
Director, Centre for Global Health
Director, Collaborative Specialization in Global Health
Dalla Lana School of Public Health, University of Toronto

Marie-Lison Fougère
Former Deputy Minister, Ministry of Francophone Affairs
Former Deputy Minister Responsible for Women's Issues

Renée F. Lyons, Ph.D.
Founding Chair and Scientific Director Emeritus,
Bridgepoint Collaboratory for Research and Innovation,
University of Toronto

Andrew Parkin, Ph.D.
Executive Director of the Environics Institute

Nancy Reynolds
Managing Partner, Sterling Lifestyle Solutions

SRDC President and CEO

David Gyarmati

The Social Research and Demonstration Corporation

(SRDC) is a non-profit research organization, created specifically to develop, field test, and rigorously evaluate new programs. SRDC's two-part mission is to help policy-makers and practitioners identify policies and programs that improve the well-being of all Canadians, with a special concern for the effects on the disadvantaged, and to raise the standards of evidence that are used in assessing these policies.

Since its establishment in December 1991, SRDC has conducted over 450 projects and studies for various federal and provincial departments, municipalities, as well as other public and non-profit organizations. SRDC has offices located in Ottawa and Vancouver, and satellite offices in Calgary, Hamilton, Montreal, Regina, Toronto, and Winnipeg.

For more information on SRDC, contact

Social Research and Demonstration Corporation
55 Murray Street, Suite 400
Ottawa, Ontario K1N 5M3
613-237-4311 | 1-866-896-7732
info@srdc.org | www.srdc.org

Vancouver Office
890 West Pender Street, Suite 440
Vancouver, British Columbia V6C 1J9
604-601-4070

Remote offices:
Alberta, British Columbia, Manitoba,
Ontario, Quebec, and Saskatchewan
1-866-896-7732

TABLE OF CONTENTS

INTRODUCTION	1
DATA	3
FTD Data	3
Education Data	5
Tax Data	6
Health Data	6
Criminal Court Data	9
METHODOLOGY	11
RESULTS	13
Schooling Outcomes	13
Labour Market Outcomes	14
Health Outcomes	18
Crime Outcomes	21
CONCLUSION	25
REFERENCES	27
APPENDIX A: REGRESSION RESULTS, FULL SAMPLE	28
APPENDIX B: REGRESSION RESULTS, SUBPOPULATIONS	40

INTRODUCTION

The Future to Discover (FTD)¹ project began over two decades ago: designed as a randomized controlled trial involving approximately 5,400 Grade 9 students from selected high schools in Manitoba and New Brunswick. The project tested the effectiveness of two early high school interventions designed to help students overcome barriers to postsecondary education (PSE) access, namely the lack of career clarity, misinformation about PSE, and the lack of financial resources.

The two interventions were called *Explore Your Horizons (EYH)*, an enhanced career development program, and *Learning Accounts (LA)*, a bursary guarantee for students from low-income families. FTD set out to test whether these interventions – offered either separately or in combination – would increase high school students’ chances of enrolling in PSE. Their impact has been established in previous reports and they were found especially effective for students from low-income and first-generation families (Ford & Hui, 2018; Ford, Hui, & Kwakye, 2019; Renée, 2023).

The FTD experiment also provides an advantageous setting to analyze how the intervention, and its subsequent impact on PSE participation, might influence other outcomes including post-graduate schooling, labour market outcomes, health outcomes, and criminality. This study, funded by Employment and Social Development Canada (ESDC), uses existing FTD data linkages to education and labour market data and adds new custom linkages to health and crime data to investigate the effect of the various FTD interventions on education, earnings, health, and criminal activity outcomes at age 30.

The objective of this study is to both update the previous estimates of the impact of FTD on education and labour market outcomes and to also consider how the study might add to our understanding of the relationship between education – a key

EXPLORE YOUR HORIZONS

EYH offered students enhanced career planning and better information about PSE programs and their costs and benefits, from early on in their high school years. It equally encouraged pursuit of programs in apprenticeship, private vocational institutes, community college, and university.

LEARNING ACCOUNTS

During the early years of high school, LA promised up to \$8,000 of non-repayable financial aid to students from lower-income families should they go on to pursue PSE. Payments to participants who made the transition to postsecondary studies were made between 2007 and 2011.

¹ FTD was funded primarily by the Canada Millennium Scholarship Foundation, developed and implemented by diverse partners in 2003 in New Brunswick and again in 2004 in Manitoba and New Brunswick as described in Ford et al. (2012). The evaluation was conducted by the Social Research and Demonstration Corporation (SRDC).

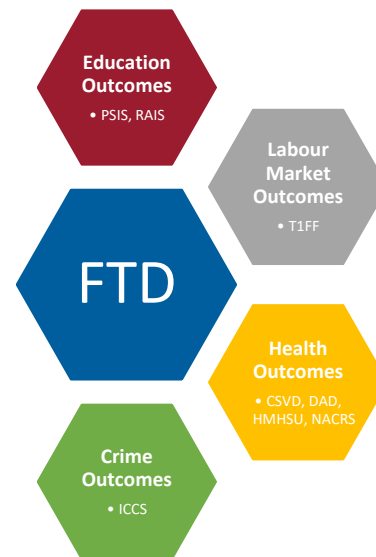
social determinant of health and crime – and health and crime. Studies of this relationship are rarely informed by Canadian data and even more rarely by genuinely experimental data sources.

DATA

FTD data was used as the backbone of the linked dataset for this study (see [Figure 1](#)). The linkage of FTD data to education (PSIS and RAIS) and tax data (T1FF) was done in 2017, while the linkage to health (CVSD, DAD, HMHSU, and NACRS) and crime (ICCS) data was a custom linkage requested by ESDC in 2023 for this exploratory study. The following subsections present each data source along with their coverage, FTD linkage rate, and the variables used in the analysis.

Figure 1 FTD-linked datasets

FTD	Future to Discover Project Data
PSIS	Postsecondary Student Information System
RAIS	Registered Apprenticeship Information System
T1FF	Tax file
CVSD	Canadian Vital Statistics – Death Database
DAD	Discharge Abstract Database
HMHSU	Hospital Mental Health and Substance Use ²
NACRS	National Ambulatory Care Reporting System
ICCS	Integrated Criminal Court Survey



FTD DATA

The FTD data contains records of 5,429 grade 9 participants across three implementation cohorts: two in New Brunswick (2004 and 2005) and one in Manitoba (2005). It includes information on high school courses taken and grades, baseline and follow-up survey data, PSE attendance and completion data collected from participating provinces' institutions up to the summer of 2014 (MB)/2015 (NB), and intervention information (e.g., assignment group, workshop participation, bursaries received).

² The linkage was originally requested for the Hospital Mental Health Database (HMHDB). The HMHSU replaces the HMHDB as the Canadian Institute for Health Information's (CIHI) hospital mental health integrated data holding.

The main element from the FTD data used in this study is the treatment variables indicating which treatment group students were randomly assigned to during the implementation. The variable is used to divide the sample into four treatment groups, each with their respective control groups. We also include two additional sub-groups for EYH participants from low-income families both because they represent a subset of participants of particular interest who likely need additional support to access postsecondary education as per Ford et al. (2012, 2019) and Hui and Ford (2018) and to provide an equivalent group to LA and EYH-LA participants who had to be from low-income families to qualify. **Table 1** outlines the treatment groups, their description, and their sample size along with the size of their corresponding control group (which can overlap across groups).

Table 1 Treatment groups definition and sample size (rounded)

Group	Description	Sample Size	
		Treatment	Control
MB EYH group	those who received the <i>Explore Your Horizons</i> intervention in Manitoba	580	470
MB EYH-LI group	a subset those from the MB EYH group who were from low-income families*	220	170
NB EYH group	those who received the <i>Explore Your Horizons</i> intervention in New Brunswick	1,040	1,450
NB EYH-LI group	a subset those from the NB EYH group who were from low-income families*	430	} 600
NB LA group	those who received <i>Learning Accounts</i> intervention in New Brunswick	550	
NB EYH-LA group	those who received both interventions combined in New Brunswick	550	

Notes: * The low-income definition matches the LA program eligibility requirement: students from families with below-median household income. Median household income was calculated from the 2001 Census data for households with children 6 to 17 years of age, rounded up to the nearest \$5,000, and adjusted for family size. See Table 3.4 in Currie et al. (2007) for additional details.

FTD was linked to the Social Data Linkage Environment (SDLE) in 2017 by Statistics Canada with a linkage rate of 99.5 per cent due to the high number of SINS available on the original files. consequently, the linkage rate is virtually identical in the other, later, linkages. **Table 2** presents the coverage of the FTD data as well as the coverage of the linked data for reference.

Table 2 Data coverage

	2003-4	2004-5	2005-6	2006-7	2007-8	2008-9	2009-10	2010-11	2011-12	2012-13	2013-14	2014-15	2015-16	2016-17	2017-18	2018-19	2019-20	2020-21
FTD Data																		
New Brunswick Cohort 1		*			**	***												
Manitoba Cohort			*			**	***											
New Brunswick Cohort 2			*			**	***											
Education Data																		
PSIS																		
↳ NB																		
↳ MB																		
RAIS																		
Tax Data																		
T1FF																		
Health Data																		
CVSD																		
DAD																		
HMHSU																		
NACRS																		
Crime Data																		
ICCS																		

Notes: * Implementation of the initiative in grade 9.

** Expected high school graduation.

*** Expected first PSE enrollment year.

EDUCATION DATA

FTD data was linked to two education datasets: the Postsecondary Student Information System (PSIS) and the Registered Apprenticeship Information System (RAIS). PSIS and RAIS consist of administrative records of apprenticeship, college, and university program students reported annually by publicly funded institutions to Statistics Canada. The records include various information about students, the programs they are enrolled in and the institutions they attend. While PSIS coverage starts in 2005-06 in the Maritime Provinces, the coverage for remaining jurisdictions starts in 2009-10 and all jurisdictions have information until 2020-21. RAIS starts in 2008 and ends in 2021. These datasets are used to develop a set of cumulative postsecondary enrollment and completion measures covering the 16-year period following the FTD intervention or 12 years following participants' expected high school graduation date.³ We opted to only

³ PSE enrollment and completion have been studied before using both PSE enrollment data within the FTD data and using linked PSIS data (Ford et al., 2012; Hui & Ford, 2017; Renée, 2021, 2023).

report cumulative measures considering the extensive research that has already been published previously on the schooling outcomes of FTD participants.

For both enrollment and completion outcomes, we derived and reported seven binary variables indicating whether FTD participants had enrolled or graduated from one of the following program categories:

- **apprenticeship program**
- **college program** (includes both certificates and diploma)
- **undergraduate program**
- **post-graduate certificate or diploma** (law, medicine, etc.)
- a university **post-graduate degree** (master’s or doctoral degree)
- **“other” university program** (programs that do not fall within the above)
- **any PSE program** (any of the above)

TAX DATA

Linking FTD data to T1 Family File offered the necessary information to track the labour market earnings of FTD participants on a year-by-year basis following their expected graduation. T1FF includes information on income from various sources, including employment income, income from government programs (such as Social Assistance, Employment Insurance, and the Child Tax Benefit), various tax credits and deductions (PSE tax credits, CPP and RPP contributions, union dues), as well as some family information (family size and type, number of children). The last year of data available in the custom FTD-T1FF is 2019.

The earnings measure is constructed from employment income (wages, salaries, commissions), Indian exempt employment income, and other employment income (tips, gratuities), and amounts are CPI-adjusted to constant 2021 dollars.

In the analysis, earnings are reported based on relative year since the intervention, starting with the fourth relative year up to the 15th relative year, as well as a cumulative 12-year earnings measure (relative year 4 through 15).

HEALTH DATA

As part of this exploratory study, FTD was linked to three health datasets that were already part of the Social Data Linkage Environment (SDLE) (CVSD, DAD, and NACRS) and one that was linked specifically for this project (HMHSU).

The **Canadian Vital Statistics – Death (CVSD) database** is an administrative survey that collects demographic and medical (cause of death) information annually and monthly from all jurisdictions in Canada. It contains demographic information, cause of death, location, as well as population-based statistics. Within the social determinant of health literature, studying the relationship between education and mortality is common; however, the effects are typically estimated over a longer period than currently available with the FTD sample. Nevertheless, the linkage was requested to estimate whether FTD, by age 30, had any impact on mortality and to support continuation of observations of that relationship as the study sample ages. The sample size affected by mortality is too small to allow for any outcomes from CVSD to be included in this report's analysis.

The **Discharge Abstract Database (DAD)** captures administrative, clinical, and demographic information on hospital discharges (including deaths, sign-outs, and transfers), as well as day surgery information (at least in Manitoba and New Brunswick). One of the main components of interest for this analysis is diagnosis information in the form of the *International Statistical Classification of Diseases and Related Health Problems, 10th Revision, Canada* (ICD-10-CA). The ICD classifies diseases, injuries, and causes of death, as well as external causes of injury and poisoning, as well as conditions and situations that are not diseases but represent risk factors to health (e.g., occupational and environmental factors, and lifestyle and psychosocial circumstances).⁴ ICD codes are divided into 23 chapters, with thousands of subcategories. The ICD code classification used in this study is described below after the other datasets are presented. Both Manitoba and New Brunswick are considered to have complete coverage in DAD.

The **National Ambulatory Care Reporting System (NACRS)** contains data for hospital-based and community-based ambulatory care, including day surgeries, outpatient and community-based clinics, and emergency departments. NACRS also contains ICD codes, however, approximately 30 per cent of observations having missing ICD information unlike in DAD for which virtually all observations have ICD codes. New Brunswick does not contribute data to NACRS.

Finally, the **Hospital Mental Health Substance Use (HMHSU)** contains data from all provinces and territories in Canada on hospitalizations for mental health and substance use. It has information on mental health and substance use disorder diagnosis (ICD and DMS-4/5) and discharges and information on days hospitalized for mental health and substance use disorder. One of the main sources of HMHSU for Manitoba and New Brunswick is the DAD, meaning that they have a comprehensive coverage of general and psychiatric hospitals in both provinces and indeed across the country.

⁴ For more information on ICD-10-CA, visit www.cihi.ca.

All datasets start in 2008-09 and the last year available in the custom linkage is 2020-21.

ICD code classification

The mere presence in one of these health datasets does not constitute a negative health outcome. For instance, people giving birth in medical facilities or using after care services would be recorded in some of the datasets, which is why we also use ICD code to look at more specific reasons for visiting hospitals and clinics.

The sample of FTD participants is too young to consider chronic illnesses and other later-stage conditions that are influenced by a lifetime of habits and behaviours. In addition, an empirical solution was not very helpful as the most commonly recorded ICD codes for the sample were related to pre- and post-pregnancy care, and delivery, and beyond those there were multiple diagnoses that were unrelated to lifestyle. Therefore, this study used a classification of social determinants of health (SDoH) devised by Nguyen et al. (2021) who produced a set of comprehensive categories of modifiable social factors, environmental exposures, and behavioral patterns influencing health outcomes beyond healthcare interventions captured in ICD codes (p. 8). These include diet and exercise, employment factors, social and family supports, tobacco use, community support and safety, alcohol use, income, mental health, substance use, and housing insecurity, as well as an aggregate measure for all of the above. In other words, the categories encompass diagnoses that can be influenced by these various SDoH.

In addition to these 11 categories, we included a category capturing all ICD codes under respiratory conditions and another capturing all substance use disorder/substance abuse (unlike the category devised by Nguyen et al. (2021) which only includes opioids and psychoactive substances). Considering the age of the FTD sample, these two categories were the most likely to be influenced by a change in lifestyle during or following postsecondary education and the easiest to code as they were integrated in the ICD structure. **Table 3** presents the categories, the ICD codes used as well as examples for them.

In the analysis, these variables are reported cumulatively for the entire observed period (i.e., between 4 and 15 years following the intervention) primarily due to small sample size concerns.

It is also important to note that ICD codes can be used differently by medical staff, some utilizing the full extent of the codes (use of detailed codes, use of multiple codes), while others only use general codes that do not capture the full extent of the condition and possible contributing factors, which many of the classifications proposed rely on. It is unknown, however, to what extent these codes are used in Manitoba and New Brunswick.

Table 3 ICD codes classification matrix

Category	ICD Code	Example specific codes
Nguyen et al. (2021)		
Diet and exercise	<ul style="list-style-type: none"> ▪ E66 ▪ Z71.3, Z71.82, Z72.3, Z72.4 	<ul style="list-style-type: none"> ▪ E66.3 Overweight ▪ Z72.3 Lack of physical exercise
Employment	<ul style="list-style-type: none"> ▪ Z56 	<ul style="list-style-type: none"> ▪ Z56.0 Unemployment, unspecified ▪ Z56.2 Threat of job loss
Family/Social Support	<ul style="list-style-type: none"> ▪ Z63 	<ul style="list-style-type: none"> ▪ Z63.0 Problems in relationship with spouse or partner ▪ Z63.31 Absence of family member
Tobacco use	<ul style="list-style-type: none"> ▪ F17.2 ▪ Z71.6, Z72.0 	<ul style="list-style-type: none"> ▪ F17.213 Nicotine dependence, cigarettes, in withdrawal ▪ Z71.6 Tobacco abuse counseling
Community support/safety	<ul style="list-style-type: none"> ▪ Z65.1-Z65.3, Z65.8-Z65.9 ▪ Z73.6, Z74, Z75.3-Z75.4 	<ul style="list-style-type: none"> ▪ Z65.2 Problems related to release from prison ▪ Z75.4 Unavailability and inaccessibility of other helping agencies
Alcohol use	<ul style="list-style-type: none"> ▪ F10 ▪ Z71.41 	<ul style="list-style-type: none"> ▪ F10.20 Uncomplicated Alcohol dependence ▪ Z71.41 Alcohol abuse counseling and surveillance of alcoholic
Income	<ul style="list-style-type: none"> ▪ Z59.5-Z59.9 	<ul style="list-style-type: none"> ▪ Z59.5 Extreme poverty ▪ Z59.7 Insufficient social insurance and welfare support
Mental health	<ul style="list-style-type: none"> ▪ F20.3, F20.9 ▪ F40.01, F40.10, F40.11, F40.9 ▪ F25, F29, F31 -F39, except F34.0 	<ul style="list-style-type: none"> ▪ T14.91 Suicide attempt ▪ F20.9 Schizophrenia, unspecified
Substance use	<ul style="list-style-type: none"> ▪ F19 ▪ F11 	<ul style="list-style-type: none"> ▪ F11.23 Opioid dependence with withdrawal ▪ F19.931 Other psychoactive substance use, unspecified with withdrawal delirium
Housing insecurity	<ul style="list-style-type: none"> ▪ Z59.0, Z59.1, Z59.4 	<ul style="list-style-type: none"> ▪ Z59.0 Homelessness ▪ Z59.1 Inadequate housing
All SdoH	<ul style="list-style-type: none"> ▪ All of the above 	
Other ICD Coding Explored		
All substance use disorder/substance abuse	<ul style="list-style-type: none"> ▪ F10-19 	<ul style="list-style-type: none"> ▪ F11.6 Mental and behavioural disorders due to use of opioids, amnesic syndrome
Respiratory conditions	<ul style="list-style-type: none"> ▪ All ICD codes stating with J 	<ul style="list-style-type: none"> ▪ J31.2 Chronic pharyngitis ▪ J17.2 Pneumonia in mycoses

CRIMINAL COURT DATA

The ICCS collects information on appearances, charges, and cases in youth and adult criminal courts. It includes information on demographics, charges and cases, crime category and crime grouping, court level and location, case time, decision, and sentencing. Data coverage starts in 2004 and the last year of data available is 2020.

Adjusting for FTD implementation date, the ICCS offers up to 15 years of data to analyze the outcomes of participants. As part of this exploratory analysis, the observed period is broken down in four periods to provide indication of whether elapsed duration since the treatment has any bearing on the outcomes. We first look at the first 5 years following FTD, then from year 6 to year 10, and from year 11 to year 15, along with another period looking at all 15 years combined.

The main outcomes of interest are contact and conviction, first overall and then broken down by common offence classification grouping: crime against the person, crimes against property, administration of justice, other criminal code, criminal code traffic, and other federal statute (see [Table 2](#)).

Table 4 ICCS common offence classification groupings

Crimes against the person		Administration of justice	
1	Homicide	18	Fail to appear
2	Attempted murder	19	Breach of probation
3	Robbery	20	Unlawfully at large
4	Sexual assault	21	Fail to comply with order
5	Other sexual offences	22	Other administration justice
6	Major assault	Other criminal code	
7	Common assault	23	Weapons
8	Uttering threats	24	Prostitution
9	Criminal harassment	25	Disturbing the peace
10	Other crimes against persons	26	Residual criminal code
Crimes against property		Criminal code traffic	
11	Motor vehicle theft	27	Impaired driving
12	Theft	28	Other Criminal Code traffic
13	Break and enter	Other federal statute	
14	Fraud	29	Drug possession
15	Mischief	30	Other drug offences
16	Possess stolen property	31	Youth Criminal Justice Act/YOA
17	Other property crimes	32	Residual federal statutes

Source: ICCS Research Data Centre User Manual, COC and COGRP, p. 158-9.

METHODOLOGY

Even with random assignment, some small differences in characteristics are possible due to random sampling variability. In 2007, SRDC compared the statistically equivalent groups over a series of 15 tables available in their Early Implementation Report (Currie et al., 2007, Tables 4.23 and A4.1 through A4.14) and found that only a handful of baseline characteristics (among the many considered) differed significantly (Ford et al., 2012, p. 43). In order to minimize the influence of such chance differences on the precision of impact estimates, the study used a regression modelling approach to estimate the effects of the intervention on the outcomes of interest while controlling for pre-identified differences.

The models all control for the following covariates collected in the FTD baseline survey, which was administered prior to the random assignment: number of children/adults in home, work status of the ‘signing’ parent (the parent who signs the consent form), family income, gender of signing parent, age of student and signing parent, student gender, student disability indicators (difficulty seeing, hearing, learning; physical/mental condition or health problem), ethnicity indicators (white and Aboriginal indicators), average mark in Grade 9 (indicator for 80 per cent or more), parents’ highest level of education, parental importance attached to the child obtaining a post-secondary education (indicator for “very important”), parental aspirations of the child’s educational attainment, an indicator of any barriers to the child reaching parents’ expectation, an indicator of the student ever working, and high school “fixed effects”⁵ (Ford et al., 2012, p. 43).

The impacts on all outcomes are estimated in linear regression models including the treatment group indicator and the additional covariates as regressors. In addition, the estimation is carried out with weights accounting for the complex sampling scheme involved in FTD, and the standard errors of the impact estimates are calculated using a non-parametric bootstrap method.

This study also estimates the impacts of the interventions on subsets of students most likely to need additional support to access postsecondary education as well as certain populations of interest as per SRDC’s 2012 and 2019 reports. These include:

- **LILE** – lower-income and lower parental education – sub-group. Among lower-income families the distinguishing feature of this group is lower parental education which is defined as not holding a postsecondary diploma, certificate, or degree requiring two or more years of study.

⁵ These fixed effects allow for school-level influences on all students at the school to be taken into account. Since students were randomly assigned within schools, it is not surprising that the high school fixed effects had no real impact on the estimates.

- **FGF** – first-generation families – sub-group comprises students whose parents have no postsecondary experience at all (that is, the highest education level of both parents at baseline was “high school or less”). Among lower-income families, this is a sub-group of the LILE group. FGF and non-FGF are included in tables to preserve continuity from earlier reports and comparability with other researchers’ work, but impacts for FGF are not discussed in the text.
- **M/F** – male and female – sub-groups.
- **OL** – official language – sub-groups in New Brunswick only.

Where sample sizes are sufficient, these results are presented in the appendix.

RESULTS

SCHOOLING OUTCOMES

Previous reports have found the interventions produced sustained postsecondary impacts in New Brunswick but no meaningful postsecondary impacts in Manitoba (Hui & Ford, 2018), but these results were based on administrative postsecondary data provided by institutions in the participating jurisdictions, survey responses, and tuition deductions with tax records. For the first time, this study uses national education data for both the Manitoba and New Brunswick samples to look at cumulative enrollment in and graduation from various postsecondary programs. **Table 5** summarizes the results of over 80 separate regressions by presenting statistically significant differences between the participants from a given treatment group relative to those from the corresponding control group as well as the direction of the difference (green up arrows for positive impacts and red down arrows for negative impacts). For detailed estimate results, see **Table 10**.

Unlike prior research, the results reveal EYH participants in Manitoba were more likely to have enrolled in and graduated from a college program within 16 years of FTD implementation (5-6 percentage points more likely than control group students to be exact). These results also drive the positive impact recorded for “any PSE” graduation.

EYH participants in New Brunswick, on the other hand, see a positive impact on undergraduate program enrollment, but only for those from low-income families. The same pattern, however, does not persist in the graduation analysis. In fact, EYH has a very small negative impact (0.4 percentage points) on graduation from post-graduate certificate or diploma program for the low-income group in New Brunswick, a result shared by the LA program as well.

LA had a positive impact on enrollment in and completion of apprenticeship programs, as well as graduation from college programs.

Participants who received both the EYH and LA interventions recorded the most positive impacts on enrollment and graduation. Indeed, they were more likely to have enrolled in undergraduate, apprenticeship, and other university programs, unsurprisingly making them more likely to have enrolled in “any PSE” within the observed period than their control group counterparts. Similarly, the combined EYH and LA program recorded a positive graduation impact from “any PSE”.

Table 5 Estimated impacts on cumulative postsecondary enrollment and graduation, 16 years following program implementation

	MB EYH		NB EYH		NB LA	NB EYH LA
	LI	All	LI	ALL		
Enrolled in a						
College program		▲				
University undergraduate program			▲			▲
Apprenticeship program					▲	▲
University post-graduate certificate or diploma						
University post-graduate degree						
Other university program						▲
Any PSE						▲
Graduated from a						
College program		▲			▲	
University undergraduate program						
Apprenticeship program					▲	
University post-graduate certificate or diploma			▼		▼	
University post-graduate degree						
Other university program						
Any PSE		▲			▲	▲

Source: Table 10.

Notes: ▲ statistically more likely to have enrolled in or graduated from a PSE program. P-value ≤ 0.1 .

▼ statistically less likely to have enrolled in or graduated from a PSE program. P-value ≤ 0.1 .

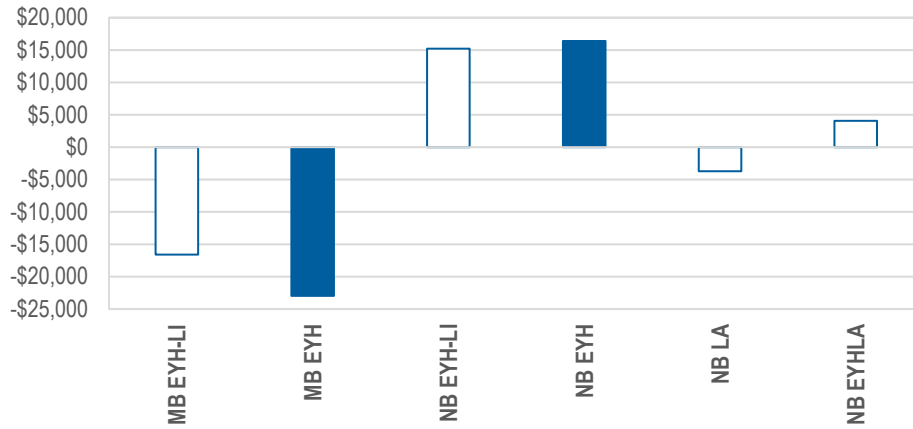
Tables 14 and 15 present results for subpopulations. The results for the LILE group, within New Brunswick, mostly mirror the full sample except the impacts were larger and the results seem to be driven by male participants as impact estimates for female participants are not statistically significant. Just like in previous research, students from francophone schools recorded a greater impact than those from anglophone schools. The Manitoba results seem to be mainly driven by FGF and males who also see greater enrollment in undergraduate programs.

LABOUR MARKET OUTCOMES

The labour market outcomes analysis focuses on earnings. Given the very high linkage rate to the SDLE and high rate of tax filing in Canada, virtually all FTD participants have at least one tax record within the observed period.

The results for the full sample are presented in Figure 2 for cumulative earnings across the entire observed period starting from the expected graduation year (i.e., four years following the intervention) up to the last year of data available (i.e., 15 relative years since the intervention so the samples are comparable), a total of 12 years.

Figure 2 Estimated impacts on 12-year cumulative earnings



Source: Table 11.

Note: Filled-in bars indicate the earnings difference is significant at least at the 10% level.

Previous work has reported negative earnings effects for Manitoba and some positive effects in the later years for the New Brunswick cohorts. When looking at cumulative earnings, the EYH intervention had a statistically significant negative impact for Manitoba students from all family income levels (a reduction of \$23,000 over 12 years), while it has a positive impact for New Brunswick students from all family income levels (an increase of \$16,000). The magnitude of the impact estimates for the low-income group in both provinces were similar, but they were not statistically significant, potentially because their smaller sample size reduced the precision of the impact estimates.

Figure 3 presents a closer look at the estimated impacts on annual earnings for each treatment. In Manitoba, the EYH intervention had consistently negative impacts on earnings, with those in years 8, 11, and 13 following the intervention being statistically significant. The size of the impact increased over time and ranged between \$2,300 to \$4,400. These impacts appeared despite their higher likelihood of enrolling in and graduating from college programs.

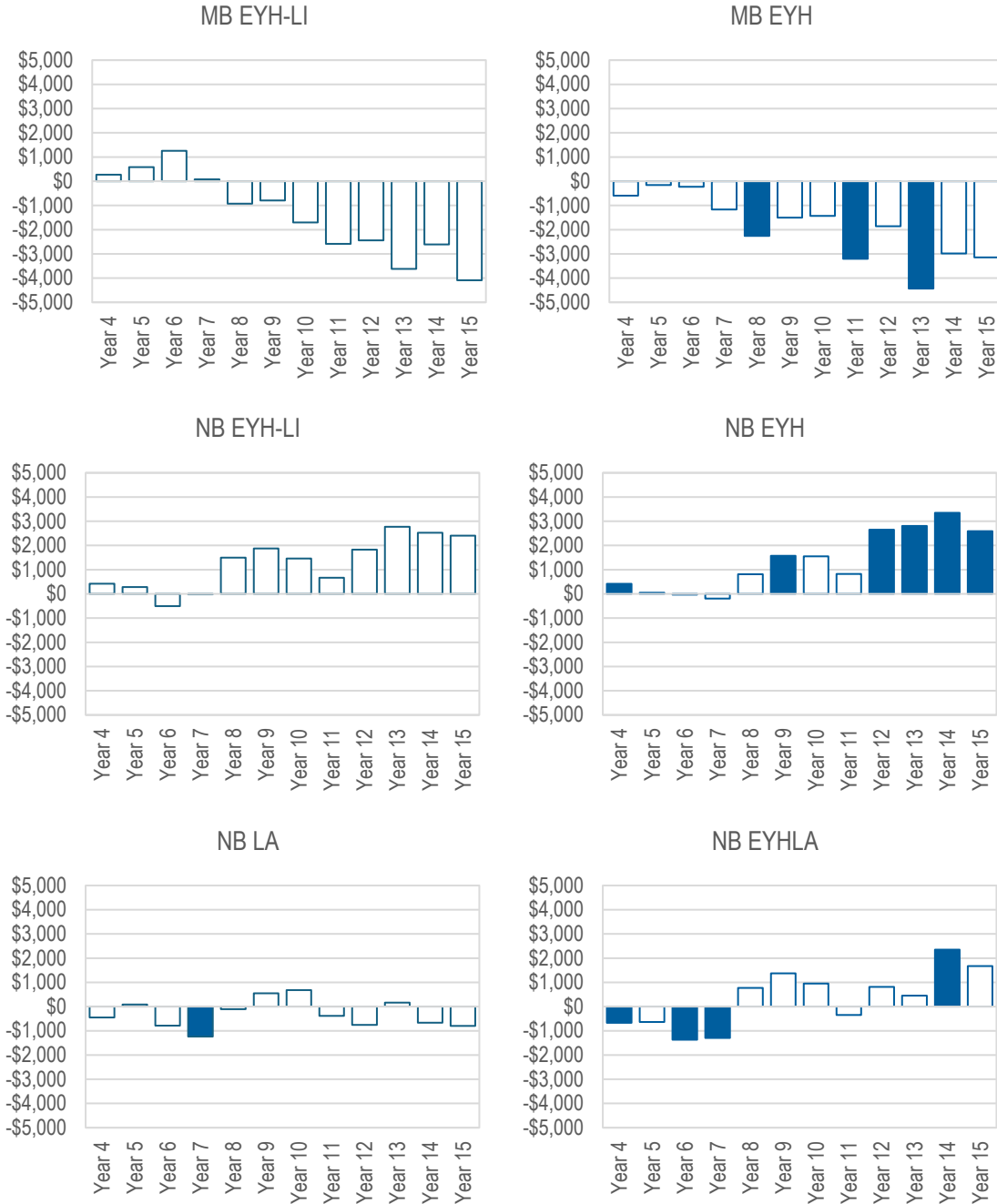
Much like in previous research, the EYH group in New Brunswick recorded higher earnings in later years than their control group counterparts; more specifically, they recorded statistically significant earnings premiums from year 12 after the intervention onward which ranged from \$2,600 to \$3,300. This aligns with the results of the postsecondary outcome, where EYH participants in New Brunswick were more likely to attend undergraduate programs.

For the LA sample, only year 7 recorded statistically significant lower earnings, but no discernable patterns appear thereafter. The combined EYH and LA intervention, however, had a negative impact immediately after expected high school graduation, but then recorded a positive impact in year 14 (\$2,400). This may reflect the characteristic dip in earnings while in PSE,

which they were more likely to pursue, as such their earnings premium may start to appear a few years later. It would be interesting to keep following this group to see if, over a longer period of time, the difference in cumulative earnings between this group and the corresponding control group also becomes statistically significant.

In the subgroup analysis (see [Table 16](#)), in Manitoba, the only statistically significant impacts were observed for female participants and the earnings differential was negative. In New Brunswick, the results for LILE participants resemble what was presented for the full sample, and so do the results for the FGF sample, except that they did not experience the same earnings premium in later years. For male participants, the impacts were much larger than presented for the full sample. For instance, the 12-year cumulative earnings were \$36,000 higher than the earnings of males in the control group for EYH.

Figure 3 Estimated impact on annual earnings



Source: Table 11.

Note: Filled-in bars indicate the earnings difference is significant at least at the 10% level.

HEALTH OUTCOMES

The first step in the health outcomes analysis was to produce basic descriptive statistics on who appears in the respective datasets. Due to sample size limitations, only results for those ever appearing in DAD or NACRS broken down by province and family income group could be released to comply with Statistics Canada’s disclosure rules regarding the relevant datasets (**Table 6**).

In Manitoba, just under 50 per cent of participants appeared in the DAD dataset and just over 50 per cent appear in NACRS. The distribution across low- and high-income groups was fairly similar. Absence from the data is to be expected since not everyone has contact with these aspects of the health system. The New Brunswick sample was as likely to appear in DAD as the Manitoba sample; however, appearing in NACRS was much less common. This is largely due to the fact that New Brunswick clinics and hospitals do not report to NACRS. These observations, then, represent participants appearing at least once in NACRS data from other jurisdictions over the 13-year period observed (e.g., out migration, visiting the ER while outside the province). Because NACRS likely does not capture a representative sample of New Brunswick participants, the rest of the report does not discuss health outcomes captured in NACRS for that group.

Table 6 Proportion of FTD participants appearing in DAD and NACRS

	Manitoba			New Brunswick		
	Low-income	High-income	Total	Low-income	High-income	Total
DAD						
Yes	49%	46%	47%	47%	42%	45%
No	51%	55%	53%	53%	58%	55%
NACRS						
Yes	54%	57%	55%	17%	21%	19%
No	46%	45%	45%	83%	78%	81%
Total	390	650	1,050	2,130	1,460	3,590

Turning to the regression analysis, only low-income EYH participants in Manitoba were more likely to appear in DAD and all Manitoba EYH participants were more likely to appear in NACRS than their respective control group participants, all else being equal. Merely appearing in DAD or NACRS does not by itself constitute an adverse health outcome. For that reason, the rest of the table summarizes the results across a variety of ICD code groupings. Both Manitoba EYH groups were more likely to appear in DAD with an ICD code related to the social determinants of health (SDoH) groupings devised by Nguyen et al. (2021). Those results seem to be driven, for the low-income group, by opioid and psychoactive drugs-related ICD codes. By contrast, for the entire EYH group, diet and exercise-related ICD codes were driving the results.

In New Brunswick, EYH participants were statistically more likely to appear in the DAD with mental health and tobacco use-related ICD codes than those from the control group. LA participants, on the other hand, have the only positive impacts in that they were less likely to appear in DAD due to a substance use-related ICD code, a result that is repeated for the SRDC-created category “All substance use disorder/abuse” in DAD and HMHSU.

Table 7 Summary of estimated impacts in health outcomes, 2008-2020

	MB EYH		NB EYH		NB LA	NB EYH LA
	Low-income	All	Low-income	All		
DAD						
Likelihood of appearing in DAD	▲					
# of records within DAD						
ICDs commonly associated with						
Employment factors						
Housing insecurity						
Income						
Family/social support						
Community support/safety						
Diet & exercise		▲				
Tobacco use			▲		▲	
Alcohol use						
Substance use	▲				▼	
Mental health				▲		
All	▲	▲				
Other ICD groupings						
All substance use disorder/abuse					▼	
Respiratory conditions						
NACRS						
Presence in DAD		▲				
# of records within DAD						
ICDs commonly associated with						
Employment factors						
Housing insecurity						
Income						
Family/social support						
Community support/safety		▲				
Diet & exercise						
Tobacco use						
Alcohol use						
Substance use						
Mental health						
All						

	MB EYH		NB EYH		NB LA	NB EYH LA
	Low-income	All	Low-income	All		
Other ICD groupings						
All substance use disorder/abuse						
Respiratory conditions						
HMHSU						
Presence in DAD						
# of records within DAD						
ICDs commonly associated with						
Employment factors						
Housing insecurity						
Income						
Family/social support						
Community support/safety						
Diet & exercise						
Tobacco use						
Alcohol use						
Substance use						
Mental health ▲						
All						
Other ICD groupings						
All substance use disorder/abuse ▼						

Source: Table 12.

Notes: ▲ statistically more likely to appear in the dataset. P-value ≤ 0.1 .

▼ statistically less likely to appear in the dataset. P-value ≤ 0.1 .

NACRS results for New Brunswick participants, though available in the appendix, are not presented in the summary due to the data limitations and the unrepresentativeness of the sample within it.

Findings from the subgroup analysis include (**Tables 17 to 19**):

- female EYH participants from New Brunswick and Manitoba EYH participants from first-generation PSE families were both more likely to appear in DAD,
- male participants in either EYH Manitoba groups were more likely to be in NACRS,
- male participants in New Brunswick LA program were less likely to be in HMHSU, and so are those from francophone schools in the low-income EYH group and female participants from the Manitoba EYH group, and finally,
- EYH participants in New Brunswick were more likely to appear in HMHSU.

CRIME OUTCOMES

The analysis of the court system data follows a similar method as the health outcomes. First, we look at who appeared in the ICCS, which – unlike the health outcomes analysis – would constitute a negative outcome by itself, and we then break down these contacts with the court system by crime groupings and convictions.

Table 8 presents a few descriptive statistics by experimental assignment group. The proportion of participants who had a contact with the criminal court system ranges from 12.8 to 18.3 per cent across all groups. The difference between the treatment and control groups differs little and instead lies between the low- and high-income groups since low-income EYH were more likely to have had a contact with the court system than those from the All group and that is true for both provinces.⁶

In terms of convictions, the proportion of participants who had any convictions (i.e., were found guilty of the crime they were charged with) over the 15-year period ranged from 5.2 to 11.8 per cent). Participants from treatment groups tended to have lower proportion of convictions than those from the control groups, and once again the proportion of low-income participants with at least one conviction was larger than those from higher-income groups.

The table also presents the number of charges for each group. As shown, the number of charges can be greater than the number of individuals in the group because individuals can have multiple charges per case brought to the court and because all charges over a 15-year period are cumulated. Interestingly, Manitoba participants tended to have a much lower conviction rate – the number of convictions over the number of charges – than New Brunswick participants. New Brunswick’s rate was almost double that of Manitoba. This suggests that the Manitoba sample was more likely to be charged with crimes that were later either dismissed or for which they were found not guilty.

Crimes against the person was the most common type of charge (e.g., criminal harassment, major assault, homicide) while the least common were charges associated with other criminal code (e.g., weapons- and prostitution-related charges). The highest proportion of conviction was across crimes against property (e.g., theft, fraud, B&E) and the category with the smallest proportion of convictions was other criminal code.

⁶ The comparison is between the low-income EYH participants and the “all EYH groups,” which they are also a part of. If the comparison was limited to individuals above and below the median household income threshold, the contrast would be even larger.

Table 8 Proportion of participants appearing in the ICCS within 15 years of the initiative

Group Sub-Group Control/Treatment	MB EYH				NB EYH				NB LA		NB EYH LA	
	Low-income		All		Low-income		All		T	C	T	C
	T	C	T	C	T	C	T	C	T	C	T	C
N=	220	170	580	470	430	600	1,040	1,450	550	600	550	600
Contact												
Any contact (%)	18.2	17.6	15.5	12.8	16.3	18.3	13.5	13.8	18.2	18.3	18.2	18.3
Any conviction (%)	9.1	11.8	5.2	6.4	11.6	11.7	7.7	9.0	9.1	11.7	10.9	11.7
Charges (#)	550	170	980	280	380	750	700	1,180	400	750	680	750
Guilty verdicts (#)	180	60	360	100	250	460	430	760	230	460	420	460
Conviction rate (i.e., verdicts/charges)	32.7	35.3	36.7	35.7	65.8	61.3	61.4	64.4	57.5	61.3	61.8	61.3
Crime Group (%)												
Crimes against person	9.1	11.8	6.9	6.4	7.0	8.3	4.8	6.2	7.3	8.3	9.1	8.3
Any conviction			3.4	2.1	4.7	6.7	2.9	4.1	3.6	6.7	5.5	6.7
Crimes against property	9.1	5.9	6.9	4.3	7.0	8.3	4.8	5.5	7.3	8.3	9.1	8.3
Any conviction			3.4	2.1	7.0	6.7	3.8	4.8	5.5	6.7	9.1	6.7
Administration of justice	9.1	5.9	5.2	4.3	4.7	6.7	3.8	4.1	5.5	6.7	7.3	6.7
Any conviction					4.7	5.0	2.9	3.4	5.5	5.0	5.5	5.0
Other criminal code			3.4	2.1	2.3	3.3	1.9	1.4	1.8	3.3	3.6	3.3
Any conviction							1.9	1.4	1.8	3.3	1.8	3.3
Criminal code traffic			5.2	4.3	7.0	6.7	5.8	4.8	5.5	6.7	5.5	6.7
Any conviction			5.2	4.3	4.7	5.0	4.8	4.1	3.6	5.0	5.5	5.0
Other federal statute			5.2	2.1	4.7	5.0	2.9	3.4	5.5	5.0	5.5	5.0
Any conviction					4.7	3.3	2.9	2.8	3.6	3.3	5.5	3.3

Note: Blank spaces indicate the number of observations were too small to be released. Both the cell with the insufficient count and its corresponding treatment or control group were merged and censored to avoid residual disclosure concerns.








Table 9 summarizes the results of over 330 separate regressions by plotting statistically significant impacts for each intervention in Manitoba and New Brunswick across each crime grouping and for each period of interest (1–5 years, 6–10 years, 11–15 years, 15–year cumulative). The red up arrows indicate that the treatment group is more likely to have a given outcome relative to the control group, an inherently negative impact, and the green down arrows indicate the opposite, an inherently positive impact.

At first glance, it seems all positive impacts were concentrated in the New Brunswick sample. Specifically, LA participants had statistically fewer contacts and convictions than the control group in the first five years after FTD (by 1.1 to 3.4 percentage points). Some crime category effects persisted into the second period (6–10 years following the program) and the intervention contributed to them recording 2.2 percentage points fewer convictions than the control group



over the observed period. EYH participants (either from the full group or the low-income group) record fewer contacts and convictions across various categories in the last period observed (i.e., 11-15 years following the program), with differences ranging from 0.4 to 2.5 percentage points, following a period where they were more likely to have contacts with the court system (i.e., 6–10 years following FTD) under specific crime groupings, ranging from 1.1 to 2.1 percentage points.

Within the Manitoba sample, the full group was statistically more likely to face charges of crimes against property (2.5 percentage points more likely) and more likely to be convicted for charges related to the administration of justice (e.g., breach of probation) or other federal statute (e.g., drug possession) cumulatively across the 15-year period, by 1.7 percentage points each. The low-income sample does not record any statistically significant impact for the full period, but they were more likely to be convicted for other criminal code charges within five years of the intervention (1.3 percentage points) and more likely to be charged with crimes related to the administration of justice (4.8 percentage points) between years 6 and 10 following the intervention.

Table 9 Summary of estimated impacts on crime outcomes, by period (1–5 years, 6–10 years, 11–15 years, 15–year cumulative)

	MB EYH				NB EYH				NB LA				NB EYH LA							
	Low-income		All		Low-income		All		NB LA		NB EYH LA									
	1-5	6-10	11-15	1-15	1-5	6-10	11-15	1-15	1-5	6-10	11-15	1-15	1-5	6-10	11-15	1-15				
Contact 							▼			▲			▼							
Crimes against Person 					▲					▲			▼							
Crimes against Property 					▲	▲		▲			▼				▼					
Admin. of Justice 		▲				▲		▲							▼					
Other Criminal Code 					▲						▼									
Criminal Code Traffic 						▲					▼		▼							
Other Federal Statute 					▲			▲	▲										▲	▲

Source: Table 13.

Notes:  indicates any contact with the court system and  indicates any conviction.

▲ statistically more likely to have had a contact with the court system or a conviction. P-value <= 0.1.

▼ statistically less likely to have had a contact with the court system or a conviction. P-value <= 0.1.

Turning to the 15-year cumulative analysis by subgroups (**Table 20**), LILE, FGF, and male participants in the Manitoba EYH program had more charges and convictions than those from the control group. In New Brunswick, LA participants across most subgroups (except female participants) had fewer charges and convictions than control group participants.

CONCLUSION

This study served as an initial exploration of the new linkage between the FTD experimental education initiative and health and courts data, as well as an updating of the schooling and labour market outcomes with information expanded both in elapsed time and a wider geography.

The schooling analysis revealed, for the first time, that the EYH intervention had a positive impact on college enrollment and graduation in Manitoba. In New Brunswick, the EYH and EYH-LA interventions had positive impacts on enrollment in undergraduate programs, but they did not impact graduation in the same way. The LA intervention had positive impacts on enrollment in and graduation from apprenticeship programs, as well as a positive impact on graduation from college programs. Finally, the combined EYH-LA intervention had positive impacts on the widest range of PSE outcomes, including positive impacts on enrollment in apprenticeship programs, undergraduate programs, and other university programs, as well as positive impacts on enrollment in and completion of PSE programs.

In Manitoba, much like in previous research, the impact of the EYH intervention on earnings was negative and grows over time. In New Brunswick, the EYH and combined EYH-LA interventions had positive impacts on earnings in later years after having negative impacts earlier on. This matches the characteristic dip in earnings while in PSE, followed by an increase in earnings after receiving a credential. However, the full EYH group did not record higher PSE enrollment or graduation relative to the control group, yet their earnings still exhibit this characteristic post-high school dip followed by an earnings premium in later years. The enhanced career education may have helped those who were going to PSE anyway, to choose better matched programs with consequences for enhancing later earnings.

While it is arguably early to look at health outcomes for FTD participants, we did find that, in Manitoba, participants were more likely to appear in NACRS and participants from low-income families were more likely to appear in DAD than their respective counterparts. The only positive impact was recorded for the LA intervention in New Brunswick, where the LA participants were less likely to appear in DAD or HMHSU with diagnosis related to substance use disorders or substance abuse than their control group counterpart. An important limitation of the health outcomes analysis is the sample size. The analysis had to contend with finding specific ICD codes or groupings that were appropriate to the FTD population which limited the sample, and broader ICD groupings which increased the sample available but limited to applicability of the results. The sheer number of ICD codes in these datasets constituted a challenge, as very few studies have produced ICD groupings specific to the age range of the FTD population, and creating our own grouping would have required time and additional expertise beyond the scope of this initial

exploration. The next steps for analysis of these data would be to continue to explore ICD groupings appropriate for FTD participants and continue to follow them as their lifestyle decisions could start to be reflected in differential use of the healthcare system.

When it comes to contacts with the criminal court system, the analysis revealed that positive effects are concentrated in the New Brunswick sample. LA participants have fewer contacts with the criminal court system across various crime groupings in the first 10 years following the program and EYH participants have fewer contacts in later years (11-15 years following the program). EYH participants were, however, more likely to be charged with a crime 6–10 years following the intervention than those from the control group). Manitoba participants were more likely to be charged with crimes across the crime code groupings and convictions over multiple periods observed.

More extensive work with these data is required to gain a deeper understanding of some of the apparently counterintuitive results obtained, especially for Manitoba.

REFERENCES

- Currie, S., Hutchison, J., Ford, R., Kwakye, I., & Tattrie, D. (2007). Future to Discover Pilot Project: Early Implementation Report. Montreal: The Canada Millennium Scholarship Foundation, https://srdc.org/wp-content/uploads/2022/07/FTD_EIR_full_report_EN.pdf.
- Ford, R., Frenette, M., Nicholson, C., Kwakye, I., Shek-wai Hui, T., Hutchison, J., Dobrer, S., Smith Fowler, H., & Hébert, S. (2012). Future to Discover: Post-secondary Impacts Report. Ottawa: The Social Research and Demonstration Corporation, https://srdc.org/wp-content/uploads/2022/07/FTD_PSI_Report_EN.pdf.
- Ford, R., Shek-wai Hui, T., & Kwakye, I. (2019). Future To Discover: Seventh Year Post-Secondary Impacts Report. Ottawa: The Social Research and Demonstration Corporation.
- Hui, T.S. & Ford, R. (2017). The long-term impacts of offering enhanced career education to Manitoba high school students – Final Report. Ottawa: The Social Research and Demonstration Corporation.
- Hui, T. S. & Ford, R. (2018). Education and Labour Market Impacts of the Future to Discover Project: Technical Report. Toronto: Higher Education Quality Council of Ontario.
- Nguyen et al. (2021). Using ICD-10-based Social Determinants of Health Categories to Assess Patients Risk for Acute Care Utilization. <https://doi.org/10.1101/2021.01.14.21249618>
- Renée, L. (2021). The income gradient in college enrollment and graduation. FutureSkills Research Lab. <http://futureskillscanada.com>
- Renée, L. (2023). The Long-Term Effects of Career Guidance in High School: Evidence from a Randomized Experiment.

APPENDIX A: REGRESSION RESULTS, FULL SAMPLE

Table 10 Postsecondary outcomes

	MB EYH				NB EYH				NB LA		NB EYH LA	
	Low-income		All		Low-income		All		Coef.	P	Coef.	P
	Coef.	P	Coef.	P	Coef.	P	Coef.	P				
Enrollment												
College program	0.011		0.051	*	-0.038		-0.013		0.032		0.007	
	(0.050)		(0.029)		(0.031)		(0.020)		(0.025)		(0.027)	
University undergraduate program	0.018		0.039		0.068	**	0.014		0.009		0.069	***
	(0.047)		(0.028)		(0.026)		(0.017)		(0.025)		(0.023)	
Apprenticeship program	-0.025		-0.012		0.000		0.003		0.031	*	0.033	*
	(0.034)		(0.020)		(0.016)		(0.012)		(0.017)		(0.017)	
University post-graduate certificate or diploma	-0.005		-0.002		-0.002		-0.002		-0.004		-0.004	
	(0.005)		(0.005)		(0.004)		(0.003)		(0.003)		(0.003)	
University post-graduate degree	0.000		-0.005		0.011		-0.007		-0.008		-0.001	
	(0.017)		(0.013)		(0.012)		(0.010)		(0.010)		(0.010)	
Other university program	-0.006		0.002		0.008		0.009		0.009		0.018	**
	(0.013)		(0.006)		(0.008)		(0.008)		(0.009)		(0.009)	
Any PSE	-0.024		0.026		0.023		0.003		0.045		0.057	**
	(0.052)		(0.027)		(0.034)		(0.018)		(0.029)		(0.026)	
Graduation												
College program	0.062		0.061	***	-0.014		-0.008		0.060	***	0.039	
	(0.042)		(0.023)		(0.028)		(0.018)		(0.022)		(0.026)	
University undergraduate program	-0.026		0.019		0.035		0.009		-0.014		0.018	
	(0.033)		(0.022)		(0.023)		(0.015)		(0.020)		(0.021)	
Apprenticeship program	-0.005		-0.012		-0.011		-0.003		0.024	*	0.008	
	(0.023)		(0.014)		(0.012)		(0.009)		(0.012)		(0.013)	

	MB EYH				NB EYH				NB LA		NB EYH LA	
	Low-income		All		Low-income		All		Coef.	P	Coef.	P
	Coef.	P	Coef.	P	Coef.	P	Coef.	P				
University post-graduate certificate or diploma			0.004		-0.004	*	-0.001		-0.004	*	-0.003	
			(0.003)		(0.002)		(0.002)		(0.002)		(0.002)	
University post-graduate degree	0.006		-0.007		0.003		-0.010		-0.004		-0.005	
	(0.012)		(0.011)		(0.009)		(0.008)		(0.010)		(0.008)	
Other university program	-0.001		0.001		-0.002		0.000		0.003		0.001	
	(0.013)		(0.006)		(0.006)		(0.005)		(0.006)		(0.005)	
Any PSE	0.033		0.048	*	0.012		-0.001		0.050	**	0.051	*
	(0.042)		(0.025)		(0.033)		(0.019)		(0.025)		(0.027)	

Table 11 Earnings outcomes

	MB EYH				NB EYH				NB LA		NB EYH LA	
	Low-income		All		Low-income		All		Coef.	P	Coef.	P
	Coef.	P	Coef.	P	Coef.	P	Coef.	P				
Cumulative earnings	-16,588 (20478)		-22963 (13355)	*	15,222 (12486)		16,401 (7717)	**	-3,711 (9500)		4,067 (9156)	
Year 4	269 (808)		-594 (443)		424 (405)		417 (243)	*	-448 (350)		-670 (355)	*
Year 5	581 (1313)		-156 (684)		284 (552)		46 (380)		84 (503)		-638 (520)	
Year 6	1255 (1338)		-226 (801)		-503 (798)		-28 (476)		-785 (619)		-1369 (636)	**
Year 7	78 (1801)		-1167 (956)		-20 (973)		-192 (623)		-1238 (721)	*	-1295 (783)	*
Year 8	-926 (1940)		-2,257 (1128)	**	1,496 (1241)		811 (775)		-110 (891)		769 (907)	
Year 9	-797 (2021)		-1,506 (1322)		1,876 (1321)		1,573 (863)	*	549 (1211)		1370 (1033)	
Year 10	-1,702 (2540)		-1,429 (1545)		1,462 (1792)		1,553 (1017)		679 (1200)		952 (1213)	
Year 11	-2586 (2632)		-3204 (1630)	**	670 (1832)		826 (1069)		-384 (1470)		-345 (1355)	
Year 12	-2440 (2878)		-1861 (1797)		1831 (1712)		2651 (1075)	**	-756 (1424)		815 (1384)	
Year 13	-3622 (3161)		-4433 (1955)	**	2774 (1871)		2806 (1172)	**	166 (1462)		453 (1277)	
Year 14	-2608 (3238)		-2984 (2201)		2523 (1952)		3348 (1307)	**	-667 (1452)		2351 (1403)	*
Year 15	-4089 (3632)		-3143 (2354)		2405 (2025)		2590 (1412)	*	-800 (1613)		1674 (1587)	

Table 12 Health outcomes

	MB EYH				NB EYH				NB LA		NB EYH LA	
	Low-income		All		Low-income		All		Coef.	P	Coef.	P
	Coef.	P	Coef.	P	Coef.	P	Coef.	P				
DAD												
Presence in DAD	0.093	*	0.038		0.022		0.016		-0.016		0.026	
	(0.049)		(0.031)		(0.032)		(0.018)		(0.033)		(0.032)	
# of records within DAD	0.452		0.141		0.000		0.109		-0.061		0.032	
	(0.326)		(0.143)		(0.142)		(0.086)		(0.121)		(0.143)	
ICDs commonly associated with												
Employment factors					-0.002		0.000		-0.002		0.000	
					(0.002)		(0.001)		(0.003)		(0.004)	
Housing insecurity	0.013		0.003		-0.002		-0.002		0.000		0.002	
	(0.008)		(0.004)		(0.002)		(0.001)		(0.003)		(0.003)	
Income					-0.002		-0.001		0.002		-0.003	
					(0.002)		(0.001)		(0.004)		(0.003)	
Family/social support					0.002		0.001		0.004		0.005	
					(0.003)		(0.002)		(0.004)		(0.004)	
Community support/safety	-0.004		-0.008		-0.002		-0.002		-0.002		-0.003	
	(0.009)		(0.005)		(0.002)		(0.001)		(0.003)		(0.003)	
Diet & exercise	0.034		0.036	***	0.003		0.002		0.004		0.002	
	(0.028)		(0.013)		(0.009)		(0.005)		(0.010)		(0.009)	
Tobacco use	0.006		-0.001		0.008		0.008	**	0.009	*	0.005	
	(0.006)		(0.003)		(0.005)		(0.004)		(0.005)		(0.004)	
Alcohol use	-0.004		-0.001		-0.008		-0.001		-0.006		0.001	
	(0.015)		(0.007)		(0.007)		(0.004)		(0.005)		(0.006)	
Substance use	0.013	*	0.003		0.006		0.001		-0.010	**	0.014	
	(0.008)		(0.004)		(0.007)		(0.004)		(0.004)		(0.009)	
Mental health	0.024		0.012		0.000		0.011	*	-0.001		0.008	
	(0.023)		(0.010)		(0.010)		(0.006)		(0.008)		(0.011)	
All	0.055	*	0.038	***	-0.001		0.002		-0.006		0.016	
	(0.033)		(0.014)		(0.015)		(0.009)		(0.012)		(0.015)	

	MB EYH				NB EYH				NB LA		NB EYH LA	
	Low-income		All		Low-income		All		Coef.	P	Coef.	P
	Coef.	P	Coef.	P	Coef.	P	Coef.	P				
Other ICD groupings												
All substance use disorder/abuse	0.021 (0.022)		0.006 (0.009)		-0.003 (0.012)		0.002 (0.007)		-0.024 (0.008)	***	0.008 (0.012)	
Respiratory conditions	0.042 (0.028)		-0.006 (0.015)		0.010 (0.017)		0.006 (0.010)		0.011 (0.016)		-0.002 (0.013)	
NACRS												
Presence in NACRS	0.055 (0.049)		0.080 (0.028)	***	-0.014 (0.029)		-0.024 (0.017)		-0.009 (0.027)		0.014 (0.024)	
# of records within NACRS	0.230 (0.908)		0.853 (0.520)		-0.477 (0.428)		-0.096 (0.284)		-0.049 (0.456)		-0.226 (0.331)	
ICDs commonly associated with												
Employment factors							0.000 (0.002)		0.002 (0.002)			
Housing insecurity			-0.001 (0.003)		-0.002 (0.002)		0.000 (0.001)		0.001 (0.003)		0.001 (0.004)	
Income					-0.002 (0.002)		-0.001 (0.001)		-0.002 (0.002)		-0.002 (0.002)	
Family/social support					-0.009 (0.004)	**	-0.003 (0.002)		-0.008 (0.003)	**	-0.008 (0.003)	**
Community support/safety			0.006 (0.003)	*	-0.005 (0.004)		-0.002 (0.002)		-0.003 (0.003)		-0.005 (0.004)	
Diet & exercise			0.004 (0.003)		0.004 (0.004)		0.006 (0.003)	**	0.002 (0.003)		0.003 (0.003)	
Tobacco use			0.002 (0.002)		0.005 (0.005)		0.003 (0.002)		0.004 (0.004)		0.009 (0.006)	
Alcohol use	-0.011 (0.012)		-0.006 (0.004)		-0.004 (0.005)		-0.003 (0.003)		0.000 (0.005)		0.005 (0.006)	
Substance use			0.000 (0.003)		-0.004 (0.003)		-0.001 (0.002)		-0.003 (0.002)		-0.001 (0.004)	

	MB EYH				NB EYH				NB LA		NB EYH LA	
	Low-income		All		Low-income		All		Coef.	P	Coef.	P
	Coef.	P	Coef.	P	Coef.	P	Coef.	P				
Mental health	-0.007		-0.002		-0.007		-0.001		-0.006		-0.005	
	(0.008)		(0.005)		(0.006)		(0.004)		(0.006)		(0.006)	
All	-0.011		0.001		-0.001		0.004		0.006		0.009	
	(0.012)		(0.006)		(0.009)		(0.006)		(0.008)		(0.009)	
Other ICD groupings												
All substance use disorder/abuse	-0.011		-0.007		-0.005		-0.004		-0.002		0.008	
	(0.012)		(0.006)		(0.006)		(0.003)		(0.005)		(0.007)	
Respiratory conditions	0.006		0.000		-0.026 *		-0.016 *		-0.007		0.016	
	(0.023)		(0.013)		(0.013)		(0.008)		(0.014)		(0.015)	
HMHSU												
Presence in HMHSU	0.000		-0.004		-0.005		0.008		-0.017		0.009	
	(0.011)		(0.005)		(0.015)		(0.009)		(0.013)		(0.015)	
# of records within HMHSU	0.007		-0.005		-0.036		0.016		-0.049		0.003	
	(0.016)		(0.007)		(0.083)		(0.044)		(0.049)		(0.061)	
ICDs commonly associated with												
Employment factors					-0.002		0.000		-0.002		0.000	
					(0.002)		(0.001)		(0.003)		(0.004)	
Housing insecurity			-0.003				-0.001		0.002		0.001	
			(0.003)				(0.001)		(0.003)		(0.001)	
Income					-0.005		-0.002		0.000		-0.005	
					(0.003)		(0.001)		(0.004)		(0.003)	
Family/social support					0.002		0.002		0.005		0.002	
					(0.003)		(0.003)		(0.004)		(0.003)	
Community support/safety					-0.002		-0.002		-0.002		-0.003	
					(0.002)		(0.001)		(0.003)		(0.003)	
Diet & exercise					0.001		0.001					
					(0.001)		(0.001)					
Tobacco use							0.000					
							(0.001)					

	MB EYH				NB EYH				NB LA		NB EYH LA	
	Low-income		All		Low-income		All		Coef.	P	Coef.	P
	Coef.	P	Coef.	P	Coef.	P	Coef.	P				
Alcohol use	-0.004		-0.002		-0.006		-0.001		-0.004		-0.001	
	(0.004)		(0.002)		(0.007)		(0.004)		(0.005)		(0.006)	
Substance use					0.008		0.003		-0.006		0.005	
					(0.008)		(0.004)		(0.005)		(0.007)	
Mental health	-0.001		-0.001		0.002		0.012	**	-0.003		0.008	
	(0.010)		(0.005)		(0.010)		(0.006)		(0.007)		(0.010)	
All	-0.004		-0.005		-0.007		-0.002		-0.013		-0.001	
	(0.004)		(0.003)		(0.010)		(0.006)		(0.008)		(0.010)	
Other ICD groupings												
All substance use disorder/abuse	-0.004		-0.005		-0.002		0.003		-0.022	***	-0.005	
	(0.004)		(0.003)		(0.012)		(0.006)		(0.008)		(0.011)	

Table 13 Crime outcomes

	MB EYH				NB EYH				NB LA		NB EYH LA	
	Low-income		All		Low-income		All		Coef.	P	Coef.	P
	Coef.	P	Coef.	P	Coef.	P	Coef.	P				
All years												
Any contact	-0.020		0.011		0.011		0.011		0.006		0.001	
	(0.043)		(0.020)		(0.026)		(0.016)		(0.025)		(0.025)	
Any conviction	-0.022		0.000		0.010		-0.005		-0.020		0.001	
	(0.031)		(0.013)		(0.018)		(0.011)		(0.018)		(0.020)	
# of charges	1.605		1.010	***	-0.131		-0.056		-0.553	**	0.049	
	(1.000)		(0.376)		(0.339)		(0.171)		(0.273)		(0.359)	
# of convictions	0.594		0.368	**	-0.013		-0.034		-0.393	**	0.020	
	(0.375)		(0.145)		(0.229)		(0.118)		(0.174)		(0.235)	
Any crimes against person	0.007		0.003		0.000		-0.004		-0.011		-0.001	
	(0.035)		(0.014)		(0.019)		(0.011)		(0.018)		(0.018)	
Any crimes against property	0.007		0.025	*	-0.014		-0.005		-0.008		0.022	
	(0.028)		(0.014)		(0.018)		(0.010)		(0.016)		(0.019)	
Any administration of justice	0.012		0.010		0.006		0.004		-0.001		0.018	
	(0.030)		(0.014)		(0.015)		(0.009)		(0.015)		(0.017)	
Any other crime code	0.008		0.006		-0.011		0.003		-0.009		-0.009	
	(0.022)		(0.011)		(0.011)		(0.006)		(0.012)		(0.011)	
Any crime code traffic	-0.008		0.005		0.009		0.006		-0.013		-0.013	
	(0.025)		(0.014)		(0.016)		(0.010)		(0.014)		(0.014)	
Any other federal statute	0.008		0.013		0.006		0.005		0.009		0.016	
	(0.026)		(0.011)		(0.014)		(0.009)		(0.013)		(0.015)	
Any conviction for crimes against person	0.016		0.007		0.002		-0.007		-0.024	*	-0.003	
	(0.025)		(0.011)		(0.015)		(0.008)		(0.014)		(0.016)	
Any conviction for crimes against property	0.007		0.005		-0.003		-0.004		-0.020		0.023	
	(0.022)		(0.010)		(0.017)		(0.009)		(0.014)		(0.019)	
Any conviction related to administration of justice	0.027		0.017	*	-0.006		-0.001		-0.002		0.001	
	(0.020)		(0.010)		(0.013)		(0.008)		(0.013)		(0.015)	

	MB EYH				NB EYH				NB LA		NB EYH LA	
	Low-income		All		Low-income		All		Coef.	P	Coef.	P
	Coef.	P	Coef.	P	Coef.	P	Coef.	P				
Any conviction for other crime codes	-0.003		-0.008		-0.004		0.004		-0.004		-0.009	
	(0.015)		(0.007)		(0.009)		(0.005)		(0.010)		(0.010)	
Any conviction for crime code traffic	-0.011		0.007		0.015		0.008		-0.006		-0.002	
	(0.025)		(0.013)		(0.015)		(0.009)		(0.013)		(0.014)	
Any conviction for other federal statute	0.019		0.017	*	0.012		0.005		0.002		0.026	**
	(0.023)		(0.009)		(0.012)		(0.007)		(0.011)		(0.013)	
Years 1 to 5												
Any contact	-0.013		0.008		0.003		0.000		-0.034	**	-0.002	
	(0.033)		(0.016)		(0.021)		(0.012)		(0.017)		(0.020)	
Any conviction	-0.005		0.005		0.011		0.000		-0.030	**	-0.003	
	(0.023)		(0.009)		(0.019)		(0.011)		(0.015)		(0.017)	
# of charges	0.944		0.517	**	0.285		0.119		-0.132		0.291	
	(0.578)		(0.213)		(0.229)		(0.125)		(0.093)		(0.191)	
# of convictions	0.382		0.189	**	0.249		0.093		-0.082		0.178	
	(0.244)		(0.084)		(0.167)		(0.093)		(0.071)		(0.125)	
Any crimes against person	0.032		0.014	*	-0.003		-0.003		-0.029	**	-0.007	
	(0.024)		(0.008)		(0.014)		(0.008)		(0.013)		(0.013)	
Any crimes against property	0.016		0.021	*	0.012		0.004		-0.009		0.022	
	(0.021)		(0.011)		(0.016)		(0.009)		(0.013)		(0.016)	
Any administration of justice	-0.001		0.011		0.001		-0.001		-0.010		-0.003	
	(0.017)		(0.009)		(0.012)		(0.007)		(0.012)		(0.012)	
Any other crime code	0.017		0.010	*	0.000		0.004		0.001		-0.001	
	(0.012)		(0.006)		(0.007)		(0.004)		(0.008)		(0.008)	
Any crime code traffic	-0.002		-0.006		0.011		0.005		-0.011	*	0.000	
	(0.013)		(0.007)		(0.010)		(0.006)		(0.006)		(0.008)	
Any other federal statute	0.011		0.017	*	-0.003		0.002		-0.007		0.014	
	(0.021)		(0.009)		(0.010)		(0.006)		(0.010)		(0.013)	
Any conviction for crimes against person	0.027		0.013	**	0.003		-0.001		-0.023	**	0.000	
	(0.017)		(0.006)		(0.012)		(0.006)		(0.011)		(0.011)	

	MB EYH				NB EYH				NB LA		NB EYH LA	
	Low-income		All		Low-income		All		Coef.	P	Coef.	P
	Coef.	P	Coef.	P	Coef.	P	Coef.	P				
Any conviction for crimes against property	0.008		0.005		0.015		0.005		-0.014		0.020	
	(0.018)		(0.007)		(0.016)		(0.009)		(0.011)		(0.016)	
Any conviction related to administration of justice	0.006		0.009		-0.003		-0.002		-0.008		-0.007	
	(0.016)		(0.007)		(0.012)		(0.007)		(0.012)		(0.012)	
Any conviction for other crime codes	0.013	*	0.007	**	0.004		0.006		0.002		0.001	
	(0.007)		(0.003)		(0.007)		(0.004)		(0.008)		(0.007)	
Any conviction for crime code traffic	-0.002		-0.006		0.012		0.004		-0.012	*	-0.001	
	(0.013)		(0.007)		(0.010)		(0.006)		(0.006)		(0.007)	
Any conviction for other federal statute	0.018		0.018	***	0.006		0.005		-0.002		0.020	*
	(0.015)		(0.007)		(0.009)		(0.005)		(0.009)		(0.011)	
Years 6 to 10												
Any contact	-0.002		0.020		0.031		0.021	*	0.013		0.020	
	(0.035)		(0.015)		(0.020)		(0.012)		(0.017)		(0.017)	
Any conviction	-0.008		0.001		0.011		0.002		0.010		0.005	
	(0.019)		(0.009)		(0.010)		(0.007)		(0.010)		(0.010)	
# of charges	0.382		0.239	**	-0.062		-0.024		-0.224	**	-0.095	
	(0.248)		(0.097)		(0.119)		(0.054)		(0.112)		(0.122)	
# of convictions	0.118		0.084	**	-0.038		-0.017		-0.162	**	-0.064	
	(0.084)		(0.036)		(0.074)		(0.035)		(0.072)		(0.084)	
Any crimes against person	0.017		0.002		0.018		0.011	*	0.011		0.010	
	(0.021)		(0.008)		(0.013)		(0.007)		(0.011)		(0.010)	
Any crimes against property	0.016		0.012	*	-0.012		-0.008		-0.016		0.011	
	(0.016)		(0.007)		(0.010)		(0.005)		(0.011)		(0.012)	
Any administration of justice	0.048	**	0.028	***	-0.003		0.001		-0.014		0.008	
	(0.020)		(0.009)		(0.010)		(0.005)		(0.009)		(0.011)	
Any other crime code	0.011		0.003		-0.001		0.001		-0.003		-0.006	
	(0.015)		(0.007)		(0.006)		(0.004)		(0.006)		(0.006)	
Any crime code traffic	-0.011		0.014		0.017		0.009		-0.006		-0.005	
	(0.024)		(0.011)		(0.013)		(0.008)		(0.010)		(0.011)	

	MB EYH				NB EYH				NB LA		NB EYH LA	
	Low-income		All		Low-income		All		Coef.	P	Coef.	P
	Coef.	P	Coef.	P	Coef.	P	Coef.	P				
Any other federal statute	-0.013 (0.020)		0.000 (0.008)		0.013 (0.007)	*	0.007 (0.005)		0.009 (0.008)		0.002 (0.006)	
Any conviction for crimes against person	0.003 (0.017)		-0.002 (0.007)		0.009 (0.010)		0.004 (0.005)		-0.008 (0.008)		0.004 (0.009)	
Any conviction for crimes against property	0.005 (0.012)		0.004 (0.005)		-0.007 (0.008)		-0.005 (0.005)		-0.017 (0.008)	**	0.010 (0.012)	
Any conviction related to administration of justice	0.023 (0.017)		0.019 (0.007)	***	-0.008 (0.008)		0.000 (0.005)		-0.016 (0.009)	*	0.000 (0.010)	
Any conviction for other crime codes	-0.003 (0.008)		-0.004 (0.005)		-0.001 (0.005)		0.001 (0.003)		-0.002 (0.005)		-0.006 (0.005)	
Any conviction for crime code traffic	-0.001 (0.022)		0.017 (0.010)	*	0.016 (0.012)		0.009 (0.007)		-0.003 (0.009)		0.001 (0.010)	
Any conviction for other federal statute	0.004 (0.016)		0.002 (0.006)		0.012 (0.007)	*	0.005 (0.004)		0.002 (0.006)		0.001 (0.005)	
Years 11 to 15												
Any contact	-0.025 (0.025)		-0.006 (0.013)		-0.025 (0.015)	*	-0.010 (0.009)		0.009 (0.018)		-0.007 (0.018)	
Any conviction	-0.008 (0.011)		-0.005 (0.005)		-0.013 (0.006)	**	-0.008 (0.004)	*	-0.001 (0.007)		0.000 (0.008)	
# of charges	0.279 (0.295)		0.254 (0.166)		-0.354 (0.125)	***	-0.151 (0.060)	**	-0.197 (0.153)		-0.147 (0.162)	
# of convictions	0.094 (0.095)		0.095 (0.063)		-0.224 (0.084)	***	-0.111 (0.040)	***	-0.150 (0.098)		-0.094 (0.107)	
Any crimes against person	-0.015 (0.019)		0.000 (0.009)		-0.009 (0.011)		-0.009 (0.007)		-0.002 (0.011)		0.000 (0.012)	
Any crimes against property	0.009 (0.011)		0.009 (0.007)		-0.023 (0.008)	***	-0.009 (0.005)	**	0.002 (0.010)		0.004 (0.012)	
Any administration of justice	-0.014 (0.022)		-0.006 (0.010)		-0.011 (0.010)		-0.005 (0.006)		-0.008 (0.009)		-0.004 (0.012)	

	MB EYH				NB EYH				NB LA		NB EYH LA	
	Low-income		All		Low-income		All		Coef.	P	Coef.	P
	Coef.	P	Coef.	P	Coef.	P	Coef.	P				
Any other crime code	0.006 (0.015)		0.001 (0.008)		-0.012 (0.005)	***	-0.003 (0.003)			-0.008 (0.006)		-0.002 (0.007)
Any crime code traffic	-0.009 (0.013)		0.000 (0.008)		-0.015 (0.008)	*	-0.003 (0.005)			-0.001 (0.009)		-0.008 (0.009)
Any other federal statute	0.010 (0.008)		0.006 (0.005)		-0.002 (0.006)		-0.002 (0.004)			0.007 (0.006)		0.004 (0.006)
Any conviction for crimes against person	0.000 (0.012)		0.006 (0.007)		-0.012 (0.008)		-0.012 (0.005)	**		-0.006 (0.009)		-0.004 (0.009)
Any conviction for crimes against property	0.010 (0.007)		0.009 (0.004)	**	-0.015 (0.006)	**	-0.007 (0.004)	*		-0.001 (0.008)		0.006 (0.010)
Any conviction related to administration of justice	0.008 (0.008)		0.005 (0.005)		-0.012 (0.008)		-0.006 (0.004)			-0.009 (0.008)		-0.010 (0.009)
Any conviction for other crime codes	0.001 (0.013)		-0.005 (0.006)		-0.009 (0.004)	**	-0.004 (0.002)	*		-0.006 (0.005)		-0.003 (0.006)
Any conviction for crime code traffic	-0.002 (0.011)		0.002 (0.006)		-0.008 (0.007)		-0.002 (0.004)			0.002 (0.007)		-0.001 (0.008)
Any conviction for other federal statute	0.005 (0.005)		0.005 (0.003)	*	-0.003 (0.004)		-0.003 (0.003)			0.006 (0.006)		0.007 (0.006)

APPENDIX B: REGRESSION RESULTS, SUBPOPULATIONS

Table 14 Postsecondary outcomes, enrollment

	MB EYH				NB EYH				NB LA		NB EYH LA	
	Low-income		All		Low-income		All		Coef.	P	Coef.	P
	Coef.	P	Coef.	P	Coef.	P	Coef.	P				
LILE												
College program			0.020		-0.012				0.043		0.023	
			(0.050)		(0.029)			(0.027)		(0.030)		
University undergraduate program			0.063		0.109 ***			0.022		0.080 ***		
			(0.050)		(0.027)			(0.029)		(0.026)		
Apprenticeship program			-0.038		-0.005			0.033 *		0.042 **		
			(0.035)		(0.016)			(0.017)		(0.019)		
University post-graduate certificate or diploma					0.002			0.000		-0.002		
					(0.004)			(0.002)		(0.002)		
University post-graduate degree			0.013		0.012			0.006		0.004		
			(0.021)		(0.010)			(0.009)		(0.008)		
Other university program			-0.001		0.010			0.012		0.019 **		
			(0.013)		(0.008)			(0.009)		(0.010)		
Any PSE			-0.015		0.065 *			0.077 **		0.084 ***		
			(0.051)		(0.034)			(0.034)		(0.031)		
FGF												
College program	-0.030		0.045		-0.011		-0.013		0.027		0.014	
	(0.077)		(0.045)		(0.040)		(0.031)		(0.038)		(0.040)	
University undergraduate program	0.020		0.099 **		0.070 **		0.033		0.062 *		0.082 ***	
	(0.066)		(0.049)		(0.031)		(0.027)		(0.034)		(0.029)	
Apprenticeship program	-0.029		-0.022		-0.010		-0.008		0.027		0.041 *	
	(0.062)		(0.035)		(0.022)		(0.019)		(0.022)		(0.024)	

	MB EYH				NB EYH				NB LA		NB EYH LA	
	Low-income		All		Low-income		All		Coef.	P	Coef.	P
	Coef.	P	Coef.	P	Coef.	P	Coef.	P				
University post-graduate certificate or diploma					-0.003		-0.002		0.000		-0.003	
					(0.003)		(0.002)		(0.004)		(0.003)	
University post-graduate degree	0.007		0.015		0.018		0.010		0.009		0.011	
	(0.027)		(0.016)		(0.012)		(0.011)		(0.010)		(0.009)	
Other university program	0.014		0.006		0.009		0.003		0.000		0.018	*
	(0.017)		(0.006)		(0.011)		(0.008)		(0.007)		(0.010)	
Any PSE	-0.001		0.091	*	0.031		0.005		0.093	**	0.090	**
	(0.088)		(0.051)		(0.045)		(0.037)		(0.044)		(0.043)	
Males												
College program	0.075		0.100	**	-0.020		0.019		0.085	**	0.095	**
	(0.081)		(0.045)		(0.038)		(0.031)		(0.037)		(0.040)	
University undergraduate program	0.061		0.067	*	0.088	***	0.016		0.005		0.090	***
	(0.077)		(0.038)		(0.033)		(0.023)		(0.032)		(0.032)	
Apprenticeship program	-0.032		-0.022		-0.010		0.007		0.046		0.081	**
	(0.074)		(0.032)		(0.033)		(0.025)		(0.038)		(0.035)	
University post-graduate certificate or diploma			0.006		-0.004		-0.003		-0.004		-0.004	
			(0.004)		(0.003)		(0.003)		(0.003)		(0.005)	
University post-graduate degree	-0.003		0.004		-0.009		-0.019		-0.006		0.007	
	(0.023)		(0.018)		(0.014)		(0.014)		(0.013)		(0.014)	
Other university program	0.001		0.013		0.015	*	0.019	*	0.014		0.023	**
	(0.027)		(0.012)		(0.008)		(0.010)		(0.009)		(0.010)	
Any PSE	-0.043		0.037		0.033		0.017		0.106	**	0.150	***
	(0.085)		(0.039)		(0.047)		(0.028)		(0.044)		(0.039)	
Females												
College program	-0.007		0.001		-0.058		-0.042		-0.006		-0.060	
	(0.102)		(0.043)		(0.045)		(0.029)		(0.040)		(0.040)	

	MB EYH				NB EYH				NB LA		NB EYH LA	
	Low-income		All		Low-income		All		Coef.	P	Coef.	P
	Coef.	P	Coef.	P	Coef.	P	Coef.	P				
University undergraduate program	-0.014		0.021		0.058		0.007		0.011		0.051	
	(0.089)		(0.040)		(0.038)		(0.023)		(0.035)		(0.035)	
Apprenticeship program	-0.033		-0.005		0.018		0.004		0.017		-0.001	
	(0.037)		(0.020)		(0.014)		(0.007)		(0.011)		(0.006)	
University post-graduate certificate or diploma	-0.008		-0.007		-0.002		-0.001		-0.004		-0.006	*
	(0.010)		(0.009)		(0.008)		(0.004)		(0.004)		(0.004)	
University post-graduate degree	0.005		-0.016		0.027		-0.002		-0.008		-0.014	
	(0.033)		(0.023)		(0.019)		(0.013)		(0.015)		(0.015)	
Other university program	-0.008		-0.004		0.000		0.000		0.000		0.008	
	(0.010)		(0.009)		(0.017)		(0.011)		(0.015)		(0.015)	
Any PSE	-0.016		0.015		0.016		-0.013		0.001		-0.014	
	(0.097)		(0.041)		(0.043)		(0.025)		(0.038)		(0.036)	
Students in Anglophone Schools (NB Only)												
College program					-0.071	*	-0.021		0.009		-0.011	
					(0.039)		(0.026)		(0.036)		(0.035)	
University undergraduate program					0.042		-0.009		-0.016		0.063	**
					(0.035)		(0.022)		(0.033)		(0.032)	
Apprenticeship program					0.004		0.002		0.028		0.036	
					(0.023)		(0.015)		(0.023)		(0.023)	
University post-graduate certificate or diploma					0.005		0.002					
					(0.005)		(0.002)					
University post-graduate degree					-0.004		-0.021	*	-0.010		-0.008	
					(0.016)		(0.012)		(0.013)		(0.012)	
Other university program					0.001		0.011		0.011		0.021	*
					(0.008)		(0.008)		(0.010)		(0.011)	
Any PSE					-0.015		-0.020		0.015		0.048	
					(0.043)		(0.024)		(0.040)		(0.036)	

	MB EYH				NB EYH				NB LA		NB EYH LA	
	Low-income		All		Low-income		All		Coef.	P	Coef.	P
	Coef.	P	Coef.	P	Coef.	P	Coef.	P				
Students in Francophone Schools (NB Only)												
College program					0.037		-0.004		0.095	**	0.047	
					(0.049)		(0.031)		(0.042)		(0.045)	
University undergraduate program					0.131	***	0.067	***	0.046		0.091	***
					(0.038)		(0.024)		(0.029)		(0.033)	
Apprenticeship program					-0.010		0.000		0.043	*	0.025	
					(0.024)		(0.015)		(0.026)		(0.026)	
University post-graduate certificate or diploma					-0.015	*	-0.009		-0.011		-0.011	
					(0.008)		(0.006)		(0.008)		(0.009)	
University post-graduate degree					0.041	**	0.025	*	-0.010		0.015	
					(0.020)		(0.015)		(0.015)		(0.017)	
Other university program					0.030		0.010		0.004		0.015	
					(0.019)		(0.014)		(0.018)		(0.014)	
Any PSE					0.098	**	0.040	*	0.106	***	0.081	**
					(0.042)		(0.022)		(0.038)		(0.040)	

Table 15 Postsecondary outcomes, graduation

	MB EYH				NB EYH				NB LA		NB EYH LA	
	Low-income		All		Low-income		All		Coef.	P	Coef.	P
	Coef.	P	Coef.	P	Coef.	P	Coef.	P				
LILE												
College program			0.035				-0.007		0.063	**	0.047	
			(0.043)				(0.027)		(0.025)		(0.031)	
University undergraduate program			0.006				0.049	**	-0.004		0.014	
			(0.033)				(0.023)		(0.023)		(0.024)	
Apprenticeship program			-0.017				-0.016		0.027	**	0.015	
			(0.024)				(0.011)		(0.013)		(0.014)	
University post-graduate certificate or diploma							-0.001		-0.002		-0.002	
							(0.002)		(0.002)		(0.002)	
University post-graduate degree			0.010				0.005		0.009		-0.002	
			(0.015)				(0.007)		(0.008)		(0.006)	
Other university program			-0.001				0.004		0.007		0.004	
			(0.013)				(0.006)		(0.007)		(0.005)	
Any PSE			0.006				0.033		0.067	**	0.070	**
			(0.045)				(0.032)		(0.031)		(0.033)	
FGF												
College program	0.038		0.068	*	0.012		0.014		0.072	**	0.058	
	(0.071)		(0.040)		(0.035)		(0.027)		(0.035)		(0.038)	
University undergraduate program	-0.028		0.031		0.029		0.016		0.013		0.016	
	(0.053)		(0.035)		(0.025)		(0.023)		(0.025)		(0.024)	
Apprenticeship program	0.024		-0.011		-0.013		-0.019		0.029		0.007	
	(0.035)		(0.024)		(0.014)		(0.013)		(0.017)		(0.016)	
University post-graduate certificate or diploma					-0.003		-0.002		-0.003		-0.003	
					(0.003)		(0.002)		(0.003)		(0.003)	
University post-graduate degree	-0.002		0.005		0.000		-0.005		0.013		0.006	
	(0.026)		(0.015)		(0.006)		(0.007)		(0.009)		(0.007)	

	MB EYH				NB EYH				NB LA		NB EYH LA	
	Low-income		All		Low-income		All		Coef.	P	Coef.	P
	Coef.	P	Coef.	P	Coef.	P	Coef.	P				
Other university program	0.014 (0.017)		0.006 (0.006)		0.007 (0.005)		0.004 (0.003)				0.007 (0.005)	
Any PSE	0.033 (0.068)		0.064 (0.050)		0.012 (0.039)		0.004 (0.036)		0.095 (0.038)	**	0.071 (0.037)	*
Males												
College program	0.067 (0.066)		0.060 (0.031)	*	0.013 (0.041)		0.018 (0.030)		0.114 (0.038)	***	0.112 (0.038)	***
University undergraduate program	-0.023 (0.049)		0.035 (0.034)		0.037 (0.027)		0.011 (0.019)		0.004 (0.024)		0.050 (0.027)	*
Apprenticeship program	0.027 (0.048)		-0.042 (0.025)	*	-0.020 (0.027)		-0.002 (0.019)		0.028 (0.026)		0.022 (0.028)	
University post-graduate certificate or diploma			0.003 (0.004)		-0.002 (0.003)		-0.001 (0.003)		-0.002 (0.002)		0.000 (0.004)	
University post-graduate degree	0.001 (0.008)		-0.002 (0.014)		-0.012 (0.012)		-0.014 (0.012)		-0.008 (0.013)		-0.003 (0.012)	
Other university program	0.001 (0.027)		0.007 (0.012)		0.005 (0.005)		0.001 (0.006)		0.012 (0.008)		0.013 (0.007)	*
Any PSE	0.025 (0.066)		0.032 (0.040)		0.010 (0.044)		0.003 (0.029)		0.110 (0.040)	***	0.122 (0.040)	***
Females												
College program	0.101 (0.088)		0.047 (0.037)		-0.036 (0.043)		-0.035 (0.026)		0.014 (0.036)		-0.016 (0.040)	
University undergraduate program	-0.005 (0.066)		0.014 (0.035)		0.036 (0.034)		0.001 (0.022)		-0.042 (0.030)		-0.017 (0.030)	
Apprenticeship program	-0.018 (0.027)		0.010 (0.014)		0.007 (0.007)		0.001 (0.003)		0.018 (0.008)	**	0.002 (0.002)	
University post-graduate certificate or diploma			0.005 (0.006)		-0.008 (0.005)		-0.001 (0.003)		-0.006 (0.003)	*	-0.006 (0.004)	*

	MB EYH				NB EYH				NB LA		NB EYH LA	
	Low-income		All		Low-income		All		Coef.	P	Coef.	P
	Coef.	P	Coef.	P	Coef.	P	Coef.	P				
University post-graduate degree	0.010		-0.010		0.012		-0.013			-0.002		-0.013
	(0.030)		(0.019)		(0.014)		(0.012)			(0.014)		(0.013)
Other university program			-0.003		-0.011		-0.001			-0.007		-0.010
			(0.006)		(0.011)		(0.008)			(0.011)		(0.009)
Any PSE	0.110		0.056		0.011		-0.012			-0.008		-0.006
	(0.093)		(0.040)		(0.047)		(0.027)			(0.039)		(0.038)
Students in Anglophone Schools (NB Only)												
College program					-0.017		-0.003			0.055	*	0.042
					(0.033)		(0.024)			(0.033)		(0.034)
University undergraduate program					0.026		0.001			-0.026		0.020
					(0.032)		(0.021)			(0.026)		(0.027)
Apprenticeship program					-0.014		-0.002			0.020		0.007
					(0.016)		(0.012)			(0.017)		(0.018)
University post-graduate certificate or diploma												
University post-graduate degree					-0.010		-0.018	*		-0.004		-0.008
					(0.011)		(0.010)			(0.012)		(0.011)
Other university program					0.000		0.003			0.011		0.003
					(0.005)		(0.005)			(0.008)		(0.006)
Any PSE					0.000		0.001			0.039		0.060
					(0.040)		(0.025)			(0.036)		(0.038)
Students in Francophone Schools (NB Only)												
College program					-0.008		-0.024			0.093	**	0.023
					(0.047)		(0.028)			(0.037)		(0.040)
University undergraduate program					0.056	*	0.030			-0.002		0.017
					(0.030)		(0.023)			(0.027)		(0.030)
Apprenticeship program					-0.007		-0.007			0.035	*	0.007
					(0.018)		(0.011)			(0.018)		(0.018)

	MB EYH				NB EYH				NB LA		NB EYH LA	
	Low-income		All		Low-income		All		Coef.	P	Coef.	P
	Coef.	P	Coef.	P	Coef.	P	Coef.	P				
University post-graduate certificate or diploma					-0.013	*	-0.003		-0.012	*	-0.007	
					(0.007)		(0.005)		(0.006)		(0.007)	
University post-graduate degree					0.025		0.009		-0.012		0.001	
					(0.017)		(0.012)		(0.015)		(0.013)	
Other university program					0.000		-0.003		-0.013		-0.002	
					(0.014)		(0.010)		(0.011)		(0.009)	
Any PSE					0.028		-0.007		0.086	**	0.031	
					(0.047)		(0.026)		(0.040)		(0.040)	

Table 16 Earnings outcomes

	MB EYH		NB EYH				NB LA		NB EYH LA			
	Low-income		All		Low-income		All		NB LA		NB EYH LA	
	Coef.	P	Coef.	P	Coef.	P	Coef.	P	Coef.	P	Coef.	P
LILE												
Cumulative earnings			-14852		20299	*	-3119		9638			
			(21924)		(11587)		(10842)		(11029)			
Year 4			-576		380		-767	*	-845	**		
			(802)		(409)		(401)		(429)			
Year 5			-569		-261		-254		-658			
			(1245)		(569)		(556)		(558)			
Year 6			782		-1019		-1032		-855			
			(1416)		(776)		(709)		(777)			
Year 7			10		-293		-1112		-900			
			(1921)		(1039)		(868)		(933)			
Year 8			69		1215		-618		891			
			(2176)		(1188)		(1019)		(1064)			
Year 9			-875		2000		536		1578			
			(2425)		(1328)		(1389)		(1243)			
Year 10			-1345		3316	**	621		1467			
			(2763)		(1647)		(1406)		(1383)			
Year 11			-1248		2045		-892		386			
			(2896)		(1766)		(1594)		(1520)			
Year 12			-1914		2580		-88		1653			
			(2817)		(1668)		(1637)		(1556)			
Year 13			-2917		3114	*	827		1004			
			(3153)		(1747)		(1646)		(1554)			
Year 14			-3036		3512	*	393		3741	**		
			(3436)		(1839)		(1679)		(1710)			
Year 15			-3232		3711	**	-733		2178			
			(3868)		(1759)		(1756)		(1885)			

	MB EYH				NB EYH				NB LA		NB EYH LA	
	Low-income		All		Low-income		All		Coef.	P	Coef.	P
	Coef.	P	Coef.	P	Coef.	P	Coef.	P				
FGF												
Cumulative earnings	639		3059		7222		10719		-8217		7623	
	(33834)		(20566)		(18807)		(13442)		(13233)		(13979)	
Year 4	-904		-387		60		-52		-1193	**	-1437	***
	(1536)		(810)		(621)		(437)		(526)		(542)	
Year 5	-1759		-156		-324		-519		-605		-920	
	(2154)		(1254)		(925)		(681)		(690)		(736)	
Year 6	-539		-398		-1269		-836		-2048	**	-809	
	(2213)		(1639)		(1162)		(877)		(865)		(947)	
Year 7	2185		941		411		115		-2155	**	243	
	(2698)		(1692)		(1486)		(1068)		(992)		(1082)	
Year 8	1670		1816		1415		1270		-2137	*	207	
	(3038)		(2166)		(1906)		(1358)		(1207)		(1377)	
Year 9	-570		1867		1642		1304		286		1502	
	(3499)		(2435)		(1964)		(1502)		(1458)		(1591)	
Year 10	-2593		-436		1184		1612		701		2366	
	(4484)		(2608)		(2632)		(1871)		(1817)		(1617)	
Year 11	-2704		-259		1045		1713		-570		467	
	(4891)		(2843)		(2535)		(1911)		(1899)		(1811)	
Year 12	-1049		-108		899		1831		-1007		1787	
	(4818)		(2739)		(2422)		(1869)		(1950)		(1952)	
Year 13	1270		-2046		1214		1933		659		54	
	(5310)		(2931)		(2598)		(1881)		(2146)		(1890)	
Year 14	3265		1219		594		1174		-575		2463	
	(5364)		(3025)		(2537)		(1994)		(2122)		(2099)	
Year 15	2367		1007		352		1173		428		1701	
	(5274)		(3057)		(2446)		(2074)		(2303)		(2385)	

	MB EYH				NB EYH				NB LA		NB EYH LA	
	Low-income		All		Low-income		All		Coef.	P	Coef.	P
	Coef.	P	Coef.	P	Coef.	P	Coef.	P				
Males												
Cumulative earnings	908		-24287		28001		36190		***	7932		12131
	(39132)		(23312)		(22180)		(13024)			(19905)		(18596)
Year 4	-615		-879		480		584			-638		-1192
	(1202)		(724)		(727)		(396)			(631)		(620)
Year 5	-546		208		834		489			464		-1528
	(1948)		(1102)		(946)		(620)			(775)		(844)
Year 6	523		-183		814		1018			252		-2141
	(2287)		(1319)		(1475)		(839)			(1210)		(1088)
Year 7	-1358		-1905		119		787			-464		-1853
	(3840)		(1750)		(1728)		(1118)			(1328)		(1556)
Year 8	-779		-3037		1942		1299			565		357
	(3777)		(1976)		(2146)		(1347)			(1877)		(1574)
Year 9	1157		-1919		2709		2306			280		744
	(4056)		(2114)		(2362)		(1519)			(2400)		(1918)
Year 10	2010		-1818		859		1953			2197		1921
	(5060)		(2568)		(3177)		(1876)			(2476)		(2368)
Year 11	3088		-3161		2665		3672		*	481		1112
	(5079)		(2714)		(3329)		(1890)			(2711)		(2553)
Year 12	2189		-1129		3978		6289		***	1280		3288
	(5012)		(2952)		(3287)		(1789)			(2858)		(2619)
Year 13	-1111		-4624		4112		5544		***	255		1275
	(5614)		(3346)		(3308)		(1912)			(2985)		(2567)
Year 14	-1166		-2752		5798		6764		***	2204		5474
	(5926)		(3624)		(3400)		(1962)			(2979)		(2794)
Year 15	-2483		-3088		3691		5485		**	1056		4674
	(6274)		(3701)		(3176)		(2253)			(2913)		(2935)

	MB EYH				NB EYH				NB LA		NB EYH LA	
	Low-income		All		Low-income		All		Coef.	P	Coef.	P
	Coef.	P	Coef.	P	Coef.	P	Coef.	P				
Females												
Cumulative earnings	-38745		-24102	*	-1866		-456		-9621		-73	
	(26866)		(14089)		(13650)		(8792)		(10225)		(11365)	
Year 4	-117		-536		462		287		-317		-201	
	(1207)		(579)		(534)		(297)		(395)		(416)	
Year 5	298		-467		-211		-322		-207		128	
	(1782)		(795)		(704)		(390)		(584)		(616)	
Year 6	1332		3		-1077		-841	*	-1340	**	-567	
	(1870)		(923)		(775)		(430)		(684)		(878)	
Year 7	-131		-190		-820		-1098	*	-1986	**	-577	
	(2314)		(1016)		(1054)		(624)		(805)		(1001)	
Year 8	-156		-1024		517		429		-682		1199	
	(2732)		(1289)		(1325)		(828)		(965)		(1247)	
Year 9	-1684		-1269		1201		1207		1127		2173	
	(2806)		(1550)		(1575)		(1070)		(1280)		(1395)	
Year 10	-3044		-837		1002		1108		404		289	
	(3276)		(1796)		(1980)		(1224)		(1487)		(1593)	
Year 11	-6925	*	-3904	*	-1561		-1563		-548		-1590	
	(3702)		(2051)		(1667)		(1243)		(1587)		(1512)	
Year 12	-9100	**	-3264		-701		-429		-1749		-676	
	(3708)		(2338)		(1920)		(1280)		(1499)		(1611)	
Year 13	-6612		-4925	**	543		389		50		444	
	(4747)		(2461)		(2291)		(1473)		(1694)		(1738)	
Year 14	-3818		-3789		-1367		301		-2487		117	
	(3998)		(2439)		(2365)		(1760)		(1888)		(1808)	
Year 15	-8787	*	-3899		147		76		-1886		-811	
	(4559)		(2505)		(2596)		(1838)		(1706)		(1771)	

	MB EYH				NB EYH				NB LA		NB EYH LA	
	Low-income		All		Low-income		All		Coef.	P	Coef.	P
	Coef.	P	Coef.	P	Coef.	P	Coef.	P	Coef.	P	Coef.	P
Students in Anglophone Schools (NB Only)												
Cumulative earnings					18989		21754	**	-4717		6280	
					(18294)		(10583)		(12977)		(12741)	
Year 4					944	*	806	***	-101		-536	
					(553)		(302)		(451)		(448)	
Year 5					673		326		636		-377	
					(780)		(532)		(706)		(723)	
Year 6					687		981		-27		-408	
					(1155)		(684)		(868)		(893)	
Year 7					901		560		-1150		-689	
					(1402)		(859)		(981)		(1078)	
Year 8					2581		1282		611		1671	
					(1609)		(1010)		(1157)		(1267)	
Year 9					2830		2448	**	104		2062	
					(1860)		(1220)		(1603)		(1429)	
Year 10					1382		1935		110		812	
					(2599)		(1531)		(1549)		(1541)	
Year 11					456		827		-2174		-1087	
					(2512)		(1546)		(1972)		(1838)	
Year 12					1329		2876	**	-1499		-223	
					(2460)		(1465)		(1930)		(1944)	
Year 13					2615		3358	**	-492		-314	
					(2854)		(1690)		(2089)		(1839)	
Year 14					2125		3492	**	-604		2953	
					(2813)		(1746)		(1855)		(1965)	
Year 15					2467		2863		-130		2418	
					(2797)		(1785)		(2213)		(2163)	

	MB EYH				NB EYH				NB LA		NB EYH LA	
	Low-income		All		Low-income		All		Coef.	P	Coef.	P
	Coef.	P	Coef.	P	Coef.	P	Coef.	P	Coef.	P	Coef.	P
Students in Francophone Schools (NB Only)												
Cumulative earnings					-3936		829		3305		-4729	
					(17398)		(11358)		(14932)		(13360)	
Year 4					-1003	*	-390		-1089	**	-1153	**
					(520)		(321)		(464)		(510)	
Year 5					-956		-646		-1090	*	-1487	**
					(696)		(492)		(651)		(616)	
Year 6					-3383	***	-2290	***	-2238	**	-3324	***
					(822)		(609)		(907)		(832)	
Year 7					-2774	**	-2068	***	-1278		-2564	**
					(1149)		(737)		(1059)		(1047)	
Year 8					-1725		-439		-1276		-1496	
					(1543)		(1026)		(1411)		(1254)	
Year 9					-1649		-863		2083		-651	
					(1846)		(1215)		(1809)		(1565)	
Year 10					152		-37		2586		372	
					(2324)		(1350)		(1940)		(2009)	
Year 11					-118		-21		3904	*	649	
					(2338)		(1546)		(2188)		(2138)	
Year 12					2184		1738		1605		2509	
					(2494)		(1626)		(2158)		(2041)	
Year 13					2368		1537		1843		1636	
					(2716)		(1668)		(2086)		(2118)	
Year 14					2667		2832		-368		951	
					(2717)		(1724)		(2272)		(2041)	
Year 15					301		1475		-1377		-171	
					(2851)		(1889)		(2266)		(2120)	

Table 17 Health outcomes, DAD

	MB EYH		NB EYH				NB LA		NB EYH LA			
	Low-income		All		Low-income		All		Coef.	P	Coef.	P
	Coef.	P	Coef.	P	Coef.	P	Coef.	P				
LILE												
Presence in DAD			0.037		-0.001		-0.015				0.018	
			(0.054)		(0.030)		(0.034)				(0.036)	
# of records within DAD			0.274		0.050		-0.067				0.002	
			(0.312)		(0.159)		(0.138)				(0.164)	
ICDs commonly associated with												
Employment factors					0.000		-0.003				-0.001	
					(0.002)		(0.003)				(0.005)	
Housing insecurity			0.019		-0.002		0.001				0.001	
			(0.012)		(0.002)		(0.004)				(0.004)	
Income					-0.002		0.002				-0.003	
					(0.002)		(0.005)				(0.004)	
Family/social support					0.002		0.005				0.006	
					(0.003)		(0.004)				(0.004)	
Community support/safety			-0.020		-0.002		-0.003				-0.003	
			(0.013)		(0.002)		(0.003)				(0.004)	
Diet & exercise			0.012		0.006		-0.001				0.006	
			(0.026)		(0.010)		(0.010)				(0.011)	
Tobacco use			0.003		0.007		0.008				0.006	
			(0.004)		(0.006)		(0.006)				(0.005)	
Alcohol use			-0.003		-0.008		-0.008				-0.005	
			(0.015)		(0.008)		(0.006)				(0.007)	
Substance use			0.009		0.010		-0.007				0.018	*
			(0.007)		(0.008)		(0.005)				(0.010)	
Mental health			0.016		0.007		-0.002				0.008	
			(0.018)		(0.010)		(0.008)				(0.010)	
All			0.031		0.004		-0.012				0.020	
			(0.032)		(0.017)		(0.014)				(0.018)	

	MB EYH				NB EYH				NB LA		NB EYH LA	
	Low-income		All		Low-income		All		Coef.	P	Coef.	P
	Coef.	P	Coef.	P	Coef.	P	Coef.	P				
Other ICD groupings												
All substance use disorder/abuse			0.006 (0.019)		0.001 (0.013)			-0.025 (0.009)	***		0.007 (0.013)	
Respiratory conditions			0.024 (0.030)		-0.001 (0.015)			0.005 (0.017)			-0.010 (0.015)	
FGF												
Presence in DAD	-0.016 (0.072)		0.016 (0.053)		-0.018 (0.045)		-0.038 (0.035)			-0.054 (0.044)		-0.002 (0.041)
# of records within DAD	0.285 (0.373)		0.096 (0.236)		0.110 (0.186)		0.223 (0.186)			-0.118 (0.191)		-0.064 (0.185)
ICDs commonly associated with												
Employment factors					-0.004 (0.004)		0.000 (0.003)			-0.005 (0.005)		-0.007 (0.007)
Housing insecurity	0.035 (0.023)		0.015 (0.009)	*	-0.004 (0.004)		-0.003 (0.003)			-0.004 (0.004)		-0.004 (0.004)
Income					-0.004 (0.004)		-0.003 (0.003)			-0.002 (0.006)		-0.007 (0.007)
Family/social support					0.005 (0.007)		0.003 (0.004)			0.007 (0.006)		0.010 (0.008)
Community support/safety	-0.016 (0.016)		-0.019 (0.012)		-0.004 (0.004)		-0.003 (0.003)			-0.005 (0.005)		-0.007 (0.007)
Diet & exercise	-0.001 (0.045)		0.014 (0.022)		0.007 (0.013)		0.003 (0.012)			0.012 (0.015)		0.001 (0.013)
Tobacco use			-0.008 (0.009)		0.014 (0.010)		0.014 (0.009)			0.007 (0.007)		0.000 (0.004)
Alcohol use	-0.011 (0.027)		0.001 (0.015)		-0.020 (0.013)		-0.008 (0.010)			-0.021 (0.009)	**	-0.009 (0.011)
Substance use	0.027 (0.020)		0.007 (0.005)		0.012 (0.015)		0.009 (0.010)			-0.014 (0.007)	**	0.012 (0.013)

	MB EYH				NB EYH				NB LA		NB EYH LA	
	Low-income		All		Low-income		All		Coef.	P	Coef.	P
	Coef.	P	Coef.	P	Coef.	P	Coef.	P				
Mental health	0.027		0.023	*	0.001		0.006		0.000		0.008	
	(0.031)		(0.013)		(0.012)		(0.010)		(0.009)		(0.014)	
All	0.022		0.020		-0.007		0.003		-0.020		-0.005	
	(0.056)		(0.029)		(0.025)		(0.021)		(0.022)		(0.027)	
Other ICD groupings												
All substance use disorder/abuse	-0.006		-0.002		-0.018		-0.004		-0.046	***	-0.011	
	(0.042)		(0.020)		(0.021)		(0.016)		(0.013)		(0.018)	
Respiratory conditions	0.049		0.019		-0.005		0.008		0.007		0.002	
	(0.045)		(0.027)		(0.023)		(0.017)		(0.020)		(0.017)	
Males												
Presence in DAD	0.076		0.032		-0.039		-0.004		-0.014		0.009	
	(0.078)		(0.038)		(0.049)		(0.030)		(0.050)		(0.045)	
# of records within DAD	0.467		0.126		-0.113		-0.016		-0.046		0.008	
	(0.489)		(0.175)		(0.159)		(0.096)		(0.171)		(0.236)	
ICDs commonly associated with												
Employment factors							0.002					
							(0.002)					
Housing insecurity	0.004		0.006				-0.001		0.005		0.001	
	(0.009)		(0.005)				(0.002)		(0.005)		(0.002)	
Income									0.007			
									(0.006)			
Family/social support					0.006		0.003		0.002		0.005	
					(0.006)		(0.003)		(0.003)		(0.005)	
Community support/safety			-0.004				-0.002					
			(0.005)				(0.002)					
Diet & exercise	0.044		0.012		0.003		0.005		0.003		-0.001	
	(0.029)		(0.014)		(0.007)		(0.004)		(0.006)		(0.005)	
Tobacco use	0.012		0.004		0.012		0.007		-0.002		0.001	
	(0.012)		(0.004)		(0.009)		(0.006)		(0.002)		(0.005)	

	MB EYH				NB EYH				NB LA		NB EYH LA	
	Low-income		All		Low-income		All		Coef.	P	Coef.	P
	Coef.	P	Coef.	P	Coef.	P	Coef.	P				
Alcohol use	-0.007		0.001		-0.010		-0.002		-0.006		0.000	
	(0.020)		(0.009)		(0.013)		(0.007)		(0.011)		(0.010)	
Substance use	0.010		0.007		-0.001		-0.003		-0.018	**	-0.004	
	(0.010)		(0.005)		(0.013)		(0.006)		(0.009)		(0.011)	
Mental health	0.014		0.018		-0.001		0.009		-0.002		0.001	
	(0.020)		(0.011)		(0.019)		(0.010)		(0.014)		(0.015)	
All	0.060		0.028		-0.009		-0.002		-0.020		0.003	
	(0.039)		(0.017)		(0.020)		(0.011)		(0.016)		(0.016)	
Other ICD groupings												
All substance use disorder/abuse	0.005		0.011		-0.022		-0.002		-0.041	**	-0.015	
	(0.027)		(0.012)		(0.024)		(0.012)		(0.018)		(0.018)	
Respiratory conditions	0.061		-0.002		-0.015		-0.009		0.006		0.003	
	(0.047)		(0.020)		(0.019)		(0.013)		(0.020)		(0.019)	
Females												
Presence in DAD	0.049		0.049		0.070		0.034		-0.006		0.041	
	(0.094)		(0.048)		(0.045)		(0.031)		(0.040)		(0.043)	
# of records within DAD	0.161		0.126		0.109		0.249	*	-0.013		-0.022	
	(0.438)		(0.225)		(0.183)		(0.138)		(0.196)		(0.183)	
ICDs commonly associated with												
Employment factors					-0.002		-0.001		-0.003		0.000	
					(0.003)		(0.002)		(0.004)		(0.006)	
Housing insecurity			-0.002		-0.004		-0.002		-0.005		0.002	
			(0.007)		(0.004)		(0.002)		(0.005)		(0.007)	
Income					-0.002		-0.001		-0.003		-0.004	
					(0.003)		(0.002)		(0.004)		(0.004)	
Family/social support					-0.001		-0.001		0.004		0.004	
					(0.001)		(0.003)		(0.006)		(0.006)	
Community support/safety	0.006		-0.009		-0.002		-0.001		-0.003		-0.004	
	(0.025)		(0.009)		(0.003)		(0.002)		(0.004)		(0.004)	

	MB EYH				NB EYH				NB LA		NB EYH LA		
	Low-income		All		Low-income		All		Coef.	P	Coef.	P	
	Coef.	P	Coef.	P	Coef.	P	Coef.	P					
Diet & exercise	0.069 (0.059)		0.066 (0.022)	***	0.007 (0.015)		0.002 (0.010)			0.005 (0.018)		0.001 (0.017)	
Tobacco use			-0.006 (0.006)		0.006 (0.007)		0.008 (0.005)	*		0.019 (0.010)	*	0.009 (0.007)	
Alcohol use	-0.007 (0.030)		-0.003 (0.011)		-0.005 (0.005)		-0.001 (0.005)			-0.004 (0.004)		0.004 (0.008)	
Substance use			0.001 (0.005)		0.013 (0.010)		0.005 (0.005)			-0.001 (0.001)		0.034 (0.012)	***
Mental health	0.003 (0.047)		0.006 (0.021)		-0.001 (0.010)		0.014 (0.007)	**		0.000 (0.011)		0.013 (0.014)	
All	0.062 (0.061)		0.057 (0.025)	**	0.014 (0.023)		0.010 (0.015)			0.009 (0.021)		0.031 (0.022)	
Other ICD groupings													
All substance use disorder/abuse	0.025 (0.044)		0.004 (0.016)		0.009 (0.015)		0.006 (0.008)			-0.008 (0.008)		0.031 (0.016)	*
Respiratory conditions	0.021 (0.048)		-0.011 (0.026)		0.018 (0.023)		0.016 (0.013)			0.007 (0.021)		-0.008 (0.018)	
Students in Anglophone Schools (NB Only)													
Presence in DAD					0.039 (0.045)		0.018 (0.026)			-0.012 (0.039)		0.012 (0.045)	
# of records within DAD					0.060 (0.189)		0.187 (0.124)			0.027 (0.149)		-0.045 (0.157)	
ICDs commonly associated with													
Employment factors					-0.002 (0.003)		0.001 (0.002)			-0.003 (0.004)		-0.001 (0.006)	
Housing insecurity					-0.003 (0.003)		-0.002 (0.002)			0.001 (0.005)		0.001 (0.005)	

	MB EYH				NB EYH				NB LA		NB EYH LA		
	Low-income		All		Low-income		All		Coef.	P	Coef.	P	
	Coef.	P	Coef.	P	Coef.	P	Coef.	P					
Income					-0.002		-0.001			0.003		-0.004	
					(0.003)		(0.001)			(0.005)		(0.005)	
Family/social support					0.004		0.003			0.007		0.009	
					(0.004)		(0.003)			(0.005)		(0.006)	
Community support/safety					-0.002		-0.002			-0.003		-0.004	
					(0.003)		(0.002)			(0.004)		(0.005)	
Diet & exercise					0.002		0.001			0.012		0.001	
					(0.010)		(0.006)			(0.013)		(0.008)	
Tobacco use					0.013	*	0.011	**		0.016	*	0.008	
					(0.008)		(0.005)			(0.008)		(0.006)	
Alcohol use					-0.006		-0.001			-0.008		-0.001	
					(0.009)		(0.005)			(0.007)		(0.008)	
Substance use					0.016		0.007			-0.004		0.025	**
					(0.010)		(0.005)			(0.004)		(0.011)	
Mental health					0.002		0.015	**		-0.005		0.008	
					(0.012)		(0.007)			(0.009)		(0.014)	
All					0.011		0.010			0.013		0.030	*
					(0.019)		(0.011)			(0.015)		(0.018)	
Other ICD groupings													
All substance use disorder/abuse					0.005		0.007			-0.024	**	0.013	
					(0.017)		(0.009)			(0.012)		(0.015)	
Respiratory conditions					0.021		0.017			0.012		-0.002	
					(0.022)		(0.014)			(0.022)		(0.018)	
Students in Francophone Schools (NB Only)													
Presence in DAD					-0.030		0.004			-0.030		0.056	
					(0.043)		(0.026)			(0.044)		(0.043)	
# of records within DAD					-0.138		-0.051			-0.237		0.223	
					(0.196)		(0.126)			(0.184)		(0.278)	

	MB EYH				NB EYH				NB LA		NB EYH LA	
	Low-income		All		Low-income		All		Coef.	P	Coef.	P
	Coef.	P	Coef.	P	Coef.	P	Coef.	P				
ICDs commonly associated with												
Employment factors												0.003 (0.004)
Housing insecurity												
Income												
Family/social support					-0.003 (0.004)		-0.004 (0.003)		-0.003 (0.004)			-0.003 (0.004)
Community support/safety							-0.001 (0.001)					
Diet & exercise					0.005 (0.018)		0.006 (0.010)		-0.017 (0.014)			-0.003 (0.018)
Tobacco use					-0.002 (0.002)		-0.001 (0.004)		-0.003 (0.004)			0.002 (0.005)
Alcohol use					-0.010 (0.006)	*	-0.001 (0.006)		-0.001 (0.007)			0.008 (0.010)
Substance use					-0.013 (0.009)		-0.011 (0.006)	*	-0.022 (0.010)	**		-0.003 (0.012)
Mental health					-0.009 (0.014)		0.004 (0.010)		0.005 (0.015)			0.008 (0.016)
All					-0.022 (0.023)		-0.010 (0.015)		-0.048 (0.017)	***		-0.009 (0.024)
Other ICD groupings												
All substance use disorder/abuse					-0.020 (0.011)	*	-0.007 (0.008)		-0.024 (0.012)	**		0.007 (0.016)
Respiratory conditions					-0.013 (0.018)		-0.015 (0.013)		0.001 (0.016)			-0.006 (0.018)

Table 18 Health outcomes, NACRS

	MB EYH				NB EYH				NB LA		NB EYH LA	
	Low-income		All		Low-income		All		Coef.	P	Coef.	P
	Coef.	P	Coef.	P	Coef.	P	Coef.	P				
LILE												
Likelihood of appearing in NACRS			0.074		-0.010				-0.021		-0.001	
			(0.059)		(0.028)			(0.029)		(0.026)		
# of records within NACRS			0.237		-0.552			-0.260		-0.373		
			(0.890)		(0.426)			(0.506)		(0.371)		
ICDs commonly associated with												
Employment factors					-0.002			0.003				
					(0.002)			(0.003)				
Housing insecurity			-0.010		-0.003			0.003		0.001		
			(0.011)		(0.002)			(0.004)		(0.004)		
Income					-0.002			-0.002		-0.002		
					(0.002)			(0.002)		(0.002)		
Family/social support					-0.007	**		-0.007	**	-0.007	*	
					(0.003)			(0.003)		(0.004)		
Community support/safety					-0.006			-0.004		-0.005		
					(0.005)			(0.004)		(0.004)		
Diet & exercise					0.008			0.003		0.003		
					(0.005)			(0.003)		(0.003)		
Tobacco use					0.005			0.005		0.011		
					(0.006)			(0.005)		(0.008)		
Alcohol use			-0.005		-0.007			-0.003		0.003		
			(0.009)		(0.006)			(0.005)		(0.007)		
Substance use			-0.010		-0.005			-0.004		-0.001		
			(0.011)		(0.003)			(0.003)		(0.005)		
Mental health					-0.005			-0.004		-0.003		
					(0.007)			(0.007)		(0.006)		
All			-0.016		0.001			0.008		0.009		
			(0.015)		(0.010)			(0.009)		(0.011)		

	MB EYH				NB EYH				NB LA		NB EYH LA	
	Low-income		All		Low-income		All		Coef.	P	Coef.	P
	Coef.	P	Coef.	P	Coef.	P	Coef.	P				
Other ICD groupings												
All substance use disorder/abuse			-0.016				-0.008			-0.005		0.006
			(0.015)				(0.006)			(0.006)		(0.008)
Respiratory conditions			0.027				-0.022	*		-0.014		0.017
			(0.023)				(0.013)			(0.015)		(0.017)
FGF												
Likelihood of appearing in NACRS	0.104		0.097	*	-0.070	**	-0.079	***		-0.050		-0.025
	(0.077)		(0.055)		(0.036)		(0.029)			(0.036)		(0.034)
# of records within NACRS	1.921		0.102	*	-1.223	*	-0.901			-0.547		-0.519
	(1.624)		(0.922)		(0.675)		(0.487)			(0.837)		(0.565)
ICDs commonly associated with												
Employment factors										0.004		
										(0.004)		
Housing insecurity			-0.007				-0.001			0.007		
			(0.007)				(0.001)			(0.006)		
Income												
Family/social support					-0.009		-0.006			-0.007	*	-0.007
					(0.006)		(0.004)			(0.004)		(0.005)
Community support/safety					-0.008		-0.004			-0.004		-0.006
					(0.008)		(0.005)			(0.006)		(0.006)
Diet & exercise					-0.002		0.003			0.001		0.006
					(0.002)		(0.005)			(0.004)		(0.006)
Tobacco use					0.002		0.003			0.004		0.017
					(0.007)		(0.004)			(0.007)		(0.012)
Alcohol use	-0.001		-0.010		-0.006		-0.004			-0.007		-0.001
	(0.020)		(0.011)		(0.010)		(0.007)			(0.007)		(0.008)
Substance use			-0.007		-0.010		-0.002			-0.007		-0.007
			(0.007)		(0.007)		(0.006)			(0.005)		(0.005)

	MB EYH				NB EYH				NB LA		NB EYH LA	
	Low-income		All		Low-income		All		Coef.	P	Coef.	P
	Coef.	P	Coef.	P	Coef.	P	Coef.	P				
Mental health					-0.001	0.000			0.000		-0.003	
					(0.009)	(0.007)			(0.010)		(0.008)	
All	-0.001	-0.017			-0.012	0.000			0.003		0.013	
	(0.020)	(0.013)			(0.015)	(0.012)			(0.014)		(0.016)	
Other ICD groupings												
All substance use disorder/abuse	-0.001	-0.017			-0.006	-0.001			-0.010		-0.001	
	(0.020)	(0.013)			(0.010)	(0.009)			(0.008)		(0.009)	
Respiratory conditions	0.072	0.026			-0.038 *	-0.036 ***			-0.025		0.018	
	(0.046)	(0.024)			(0.022)	(0.014)			(0.020)		(0.024)	
Males												
Likelihood of appearing in NACRS	0.134 *	0.121 ***			-0.050	-0.043 *			-0.039		-0.047	
	(0.072)	(0.043)			(0.045)	(0.025)			(0.037)		(0.035)	
# of records within NACRS	1.020	0.982 **			-0.386	-0.422 *			-0.222		-0.263	
	(1.116)	(0.446)			(0.506)	(0.249)			(0.424)		(0.368)	
ICDs commonly associated with												
Employment factors									0.006			
									(0.005)			
Housing insecurity		-0.006			-0.003	-0.003			0.001		-0.005	
		(0.005)			(0.004)	(0.002)			(0.008)		(0.005)	
Income					-0.003	-0.002			-0.006		-0.005	
					(0.004)	(0.002)			(0.006)		(0.005)	
Family/social support					-0.011	-0.006 *			-0.011 *		-0.012 **	
					(0.007)	(0.003)			(0.007)		(0.006)	
Community support/safety					-0.003	-0.002			-0.003		-0.003	
					(0.004)	(0.002)			(0.007)		(0.006)	
Diet & exercise						0.004					0.002	
						(0.003)					(0.002)	
Tobacco use		0.005			0.000	0.001			-0.003		0.010	
		(0.005)			(0.009)	(0.004)			(0.004)		(0.010)	

	MB EYH				NB EYH				NB LA		NB EYH LA	
	Low-income		All		Low-income		All		Coef.	P	Coef.	P
	Coef.	P	Coef.	P	Coef.	P	Coef.	P				
Alcohol use	0.010		-0.005		-0.007		-0.008	*		-0.004		0.013
	(0.012)		(0.007)		(0.006)		(0.004)			(0.008)		(0.010)
Substance use			-0.004		-0.003		-0.002			-0.002		-0.003
			(0.006)		(0.004)		(0.002)			(0.003)		(0.003)
Mental health			-0.009		0.000		-0.002			-0.003		-0.003
			(0.006)		(0.007)		(0.005)			(0.008)		(0.007)
All	0.010		-0.005		-0.012		-0.006			0.002		0.015
	(0.012)		(0.010)		(0.012)		(0.006)			(0.012)		(0.014)
Other ICD groupings												
All substance use disorder/abuse	0.010		-0.005		-0.007		-0.009	**		-0.004		0.020
	(0.012)		(0.010)		(0.006)		(0.004)			(0.008)		(0.012)
Respiratory conditions	0.014		0.008		-0.047	***	-0.030	**		-0.001		0.026
	(0.027)		(0.015)		(0.017)		(0.012)			(0.018)		(0.023)
Females												
Likelihood of appearing in NACRS	-0.013		0.028		0.018		-0.004			0.023		0.076
	(0.080)		(0.039)		(0.042)		(0.024)			(0.035)		(0.036)
# of records within NACRS	-1.087		0.510		-0.487		0.204			0.140		-0.237
	(1.502)		(0.963)		(0.664)		(0.500)			(0.810)		(0.588)
ICDs commonly associated with												
Employment factors							0.001					
							(0.003)					
Housing insecurity			0.003				0.002					0.006
			(0.003)				(0.002)					(0.006)
Income												
Family/social support					-0.004		0.000			-0.003		-0.003
					(0.004)		(0.003)			(0.003)		(0.003)
Community support/safety			0.011	*	-0.004		0.000			-0.002		-0.008
			(0.006)		(0.006)		(0.004)			(0.003)		(0.006)

	MB EYH				NB EYH				NB LA		NB EYH LA	
	Low-income		All		Low-income		All		Coef.	P	Coef.	P
	Coef.	P	Coef.	P	Coef.	P	Coef.	P				
Diet & exercise			0.008		0.008		0.007		0.004		0.003	
			(0.006)		(0.007)		(0.005)		(0.005)		(0.005)	
Tobacco use					0.007		0.005		0.011		0.009	
					(0.006)		(0.003)		(0.008)		(0.007)	
Alcohol use	-0.049		-0.010		0.000		0.000		0.001		-0.002	
	(0.038)		(0.008)		(0.008)		(0.005)		(0.008)		(0.007)	
Substance use			0.003		-0.002		0.000		0.000		0.003	
			(0.003)		(0.003)		(0.003)		(0.002)		(0.007)	
Mental health	-0.029		0.001		-0.012		-0.001		-0.004		-0.009	
	(0.030)		(0.009)		(0.009)		(0.006)		(0.007)		(0.008)	
All	-0.049		0.004		0.010		0.014		0.012		0.002	
	(0.038)		(0.009)		(0.013)		(0.009)		(0.013)		(0.012)	
Other ICD groupings												
All substance use disorder/abuse	-0.049		-0.012		0.000		-0.001		-0.001		-0.003	
	(0.038)		(0.009)		(0.010)		(0.006)		(0.008)		(0.008)	
Respiratory conditions	-0.021		-0.018		-0.012		-0.004		-0.005		0.013	
	(0.052)		(0.022)		(0.021)		(0.015)		(0.018)		(0.023)	
Students in Anglophone Schools (NB Only)												
Likelihood of appearing in NACRS					-0.025		-0.032		0.007		0.020	
					(0.041)		(0.026)		(0.037)		(0.036)	
# of records within NACRS					-0.693		-0.212		-0.094		-0.422	
					(0.606)		(0.399)		(0.637)		(0.463)	
ICDs commonly associated with												
Employment factors							0.001		0.003			
							(0.002)		(0.003)			
Housing insecurity					-0.003		0.000		0.000		0.002	
					(0.003)		(0.002)		(0.005)		(0.006)	
Income					-0.003		-0.001		-0.003		-0.002	
					(0.003)		(0.001)		(0.003)		(0.003)	

	MB EYH				NB EYH				NB LA		NB EYH LA		
	Low-income		All		Low-income		All		Coef.	P	Coef.	P	
	Coef.	P	Coef.	P	Coef.	P	Coef.	P					
Family/social support					-0.012	**	-0.004			-0.012	**	-0.012	**
					(0.005)		(0.003)			(0.005)		(0.005)	
Community support/safety					-0.010	*	-0.003			-0.007		-0.008	
					(0.006)		(0.003)			(0.004)		(0.005)	
Diet & exercise					0.005		0.008	*		0.002		0.004	
					(0.005)		(0.004)			(0.002)		(0.004)	
Tobacco use					0.006		0.003			0.006		0.012	
					(0.008)		(0.004)			(0.006)		(0.010)	
Alcohol use					-0.005		-0.006			-0.001		0.008	
					(0.008)		(0.005)			(0.007)		(0.009)	
Substance use					-0.006		-0.001			-0.005		0.000	
					(0.004)		(0.003)			(0.004)		(0.006)	
Mental health					-0.011		-0.004			-0.006		-0.006	
					(0.008)		(0.005)			(0.009)		(0.007)	
All					-0.006		0.006			0.007		0.012	
					(0.013)		(0.008)			(0.011)		(0.014)	
Other ICD groupings													
All substance use disorder/abuse					-0.008		-0.007			-0.004		0.010	
					(0.008)		(0.005)			(0.008)		(0.010)	
Respiratory conditions					-0.034	*	-0.020			-0.012		0.025	
					(0.019)		(0.014)			(0.021)		(0.022)	
Students in Francophone Schools (NB Only)													
Likelihood of appearing in NACRS					0.002		-0.010			-0.038		0.003	
					(0.033)		(0.020)			(0.026)		(0.029)	
# of records within NACRS					-0.003		0.109			0.264		0.310	
					(0.241)		(0.176)			(0.429)		(0.301)	

	MB EYH				NB EYH				NB LA		NB EYH LA	
	Low-income		All		Low-income		All		Coef.	P	Coef.	P
	Coef.	P	Coef.	P	Coef.	P	Coef.	P				
ICDs commonly associated with												
Employment factors							-0.002		0.004			
							(0.002)		(0.004)			
Housing insecurity					0.006		0.002		0.004		0.004	
					(0.004)		(0.002)		(0.004)		(0.003)	
Income												
Family/social support												
Community support/safety												
Diet & exercise					0.001		0.001		0.000		0.001	
					(0.007)		(0.003)		(0.007)		(0.004)	
Tobacco use							0.002				0.004	
							(0.002)				(0.004)	
Alcohol use							0.002					
							(0.002)					
Substance use							-0.001					
							(0.002)					
Mental health					0.003		0.006		-0.008		-0.003	
					(0.010)		(0.006)		(0.006)		(0.006)	
All					0.006		0.002		0.004		0.005	
					(0.008)		(0.005)		(0.008)		(0.005)	
Other ICD groupings												
All substance use disorder/abuse					0.005		0.003				0.004	
					(0.005)		(0.003)				(0.004)	
Respiratory conditions					-0.007		-0.009		0.006		-0.001	
					(0.013)		(0.009)		(0.011)		(0.011)	

Table 19 Health outcomes, HMHSU

	MB EYH				NB EYH				NB LA		NB EYH LA	
	Low-income		All		Low-income		All		Coef.	P	Coef.	P
	Coef.	P	Coef.	P	Coef.	P	Coef.	P				
LILE												
Likelihood of appearing in HMHSU			0.009		0.007				-0.010		0.010	
			(0.009)		(0.016)				(0.015)		(0.015)	
# of records within HMHSU			0.009		0.006				-0.034		-0.011	
			(0.009)		(0.093)				(0.053)		(0.060)	
ICDs commonly associated with												
Employment factors					0.000				-0.003		-0.001	
					(0.002)				(0.003)		(0.005)	
Housing insecurity									0.003			
									(0.003)			
Income									-0.005		0.000	
									(0.003)		(0.005)	
Family/social support									0.005		0.007	
									(0.004)		(0.005)	
Community support/safety									-0.002		-0.003	
									(0.002)		(0.003)	
Diet & exercise									0.002			
									(0.002)			
Tobacco use									-0.001			
									(0.001)			
Alcohol use									-0.005		-0.005	
									(0.008)		(0.006)	
Substance use									0.012		-0.003	
									(0.009)		(0.006)	
Mental health									0.011		0.000	
									(0.010)		(0.007)	
All									-0.001		-0.011	
									(0.012)		(0.009)	

	MB EYH				NB EYH				NB LA		NB EYH LA	
	Low-income		All		Low-income		All		Coef.	P	Coef.	P
	Coef.	P	Coef.	P	Coef.	P	Coef.	P				
Other ICD groupings												
All substance use disorder/abuse									0.004	-0.020	**	-0.008
									(0.014)	(0.009)		(0.012)
FGF												
Likelihood of appearing in HMHSU	0.008		0.007		-0.021		-0.005		-0.015			-0.012
	(0.012)		(0.006)		(0.025)		(0.019)		(0.022)			(0.021)
# of records within HMHSU	0.008		0.007		0.087		0.098		-0.029			0.010
	(0.012)		(0.006)		(0.100)		(0.086)		(0.046)			(0.057)
ICDs commonly associated with												
Employment factors					-0.004		0.000		-0.005			-0.007
					(0.004)		(0.003)		(0.005)			(0.007)
Housing insecurity												
Income					-0.004		-0.003		-0.002			-0.007
					(0.004)		(0.003)		(0.006)			(0.007)
Family/social support					0.005		0.007		0.010			0.005
					(0.007)		(0.006)		(0.007)			(0.006)
Community support/safety					-0.004		-0.003		-0.005			-0.007
					(0.004)		(0.003)		(0.005)			(0.007)
Diet & exercise					0.002		0.002					
					(0.002)		(0.002)					
Tobacco use							-0.001					
							(0.001)					
Alcohol use					-0.015		-0.006		-0.017	*		-0.011
					(0.013)		(0.009)		(0.009)			(0.010)
Substance use					0.017		0.013		-0.012	*		0.003
					(0.015)		(0.011)		(0.007)			(0.010)
Mental health					0.003		0.007		0.001			0.010
					(0.012)		(0.010)		(0.009)			(0.014)

	MB EYH				NB EYH				NB LA		NB EYH LA	
	Low-income		All		Low-income		All		Coef.	P	Coef.	P
	Coef.	P	Coef.	P	Coef.	P	Coef.	P				
All					-0.011		0.002		-0.025	*	-0.015	
					(0.018)		(0.014)		(0.014)		(0.017)	
Other ICD groupings												
All substance use disorder/abuse					-0.014		0.000		-0.037	***	-0.023	
					(0.020)		(0.015)		(0.013)		(0.015)	
Males												
Likelihood of appearing in HMHSU	0.009		0.007		-0.031		-0.004		-0.034	*	-0.017	
	(0.011)		(0.007)		(0.025)		(0.013)		(0.019)		(0.023)	
# of records within HMHSU	0.016		0.011		-0.117		-0.037		-0.107		-0.113	
	(0.019)		(0.010)		(0.135)		(0.060)		(0.115)		(0.146)	
ICDs commonly associated with												
Employment factors							0.002					
							(0.002)					
Housing insecurity							-0.001		0.005		0.001	
							(0.002)		(0.005)		(0.002)	
Income					-0.005		-0.002		0.003		-0.005	
					(0.004)		(0.002)		(0.007)		(0.005)	
Family/social support					0.006		0.003		0.002		0.005	
					(0.006)		(0.003)		(0.003)		(0.005)	
Community support/safety							-0.002					
							(0.002)					
Diet & exercise												
Tobacco use							0.001					
							(0.002)					
Alcohol use					-0.006		0.000		-0.003		-0.005	
					(0.013)		(0.007)		(0.011)		(0.009)	
Substance use					-0.001		-0.003		-0.013		-0.004	
					(0.013)		(0.006)		(0.011)		(0.011)	

	MB EYH				NB EYH				NB LA		NB EYH LA	
	Low-income		All		Low-income		All		Coef.	P	Coef.	P
	Coef.	P	Coef.	P	Coef.	P	Coef.	P				
Mental health	0.007		0.008		-0.002		0.008		-0.001		-0.002	
	(0.009)		(0.006)		(0.019)		(0.009)		(0.013)		(0.015)	
All					-0.020		-0.011		-0.025		-0.010	
					(0.018)		(0.010)		(0.015)		(0.017)	
Other ICD groupings												
All substance use disorder/abuse					-0.026		-0.006		-0.040	**	-0.026	
					(0.023)		(0.011)		(0.019)		(0.018)	
Females												
Likelihood of appearing in HMHSU	-0.030		-0.014	*	0.012		0.020	*	0.000		0.025	
	(0.031)		(0.008)		(0.020)		(0.011)		(0.020)		(0.021)	
# of records within HMHSU	-0.030		-0.020		0.028		0.070		0.006		0.071	
	(0.031)		(0.013)		(0.065)		(0.046)		(0.036)		(0.055)	
ICDs commonly associated with												
Employment factors					-0.002		-0.001		-0.003		0.000	
					(0.003)		(0.002)		(0.004)		(0.006)	
Housing insecurity			-0.005									
			(0.006)									
Income					-0.002		-0.001		-0.003		-0.004	
					(0.003)		(0.002)		(0.004)		(0.004)	
Family/social support					-0.001		0.002		0.007		-0.002	
					(0.001)		(0.004)		(0.007)		(0.002)	
Community support/safety					-0.002		-0.001		-0.003		-0.004	
					(0.003)		(0.002)		(0.004)		(0.004)	
Diet & exercise					0.001		0.001					
					(0.002)		(0.001)					
Tobacco use							-0.001					
							(0.001)					
Alcohol use	-0.001		-0.003		-0.005		-0.003		-0.004		0.004	
	(0.007)		(0.003)		(0.005)		(0.004)		(0.004)		(0.008)	

	MB EYH				NB EYH				NB LA		NB EYH LA	
	Low-income		All		Low-income		All		Coef.	P	Coef.	P
	Coef.	P	Coef.	P	Coef.	P	Coef.	P				
Substance use					0.015		0.009	*			0.014	*
					(0.010)		(0.005)				(0.007)	
Mental health	-0.029		-0.011		0.003		0.016	**	-0.005		0.015	
	(0.030)		(0.008)		(0.011)		(0.007)		(0.009)		(0.014)	
All	-0.001		-0.008		0.007		0.005		0.000		0.009	
	(0.007)		(0.006)		(0.012)		(0.008)		(0.009)		(0.011)	
Other ICD groupings												
All substance use disorder/abuse	-0.001		-0.008		0.016		0.011		-0.006		0.015	
	(0.007)		(0.006)		(0.015)		(0.007)		(0.007)		(0.013)	
Students in Anglophone Schools (NB Only)												
Likelihood of appearing in HMHSU					0.009		0.018		-0.027		0.012	
					(0.020)		(0.012)		(0.018)		(0.021)	
# of records within HMHSU					-0.104		-0.003		-0.087		-0.050	
					(0.120)		(0.052)		(0.072)		(0.088)	
ICDs commonly associated with												
Employment factors					-0.002		0.001		-0.003		-0.001	
					(0.003)		(0.002)		(0.004)		(0.006)	
Housing insecurity							-0.001		0.003			
							(0.001)		(0.004)			
Income					-0.007		-0.003		0.001		-0.007	
					(0.005)		(0.002)		(0.006)		(0.006)	
Family/social support					0.004		0.005		0.007		0.004	
					(0.004)		(0.004)		(0.005)		(0.004)	
Community support/safety					-0.002		-0.002		-0.003		-0.004	
					(0.003)		(0.002)		(0.004)		(0.005)	
Diet & exercise												
Tobacco use							0.002					
							(0.002)					

	MB EYH				NB EYH				NB LA		NB EYH LA	
	Low-income		All		Low-income		All		Coef.	P	Coef.	P
	Coef.	P	Coef.	P	Coef.	P	Coef.	P				
Alcohol use					-0.006		-0.001			-0.008		-0.004
					(0.009)		(0.005)			(0.007)		(0.007)
Substance use					0.016		0.007			-0.001		0.008
					(0.010)		(0.005)			(0.006)		(0.007)
Mental health					0.007		0.016	**		-0.010		0.008
					(0.013)		(0.006)			(0.009)		(0.014)
All					-0.002		0.003			-0.010		0.001
					(0.014)		(0.009)			(0.011)		(0.013)
Other ICD groupings												
All substance use disorder/abuse					0.004		0.007			-0.024	**	-0.005
					(0.017)		(0.009)			(0.011)		(0.013)
Students in Francophone Schools (NB Only)												
Likelihood of appearing in HMHSU					-0.029	*	-0.007			0.001		0.006
					(0.017)		(0.011)			(0.019)		(0.021)
# of records within HMHSU					0.115		0.076			0.040		0.111
					(0.135)		(0.083)			(0.045)		(0.083)
ICDs commonly associated with												
Employment factors												
Housing insecurity												0.003
												(0.004)
Income												
Family/social support					-0.003		-0.004			0.000		-0.003
					(0.004)		(0.003)			(0.005)		(0.004)
Community support/safety							-0.001					
							(0.001)					
Diet & exercise					0.004		0.003					
					(0.004)		(0.002)					

	MB EYH				NB EYH				NB LA		NB EYH LA	
	Low-income		All		Low-income		All		Coef.	P	Coef.	P
	Coef.	P	Coef.	P	Coef.	P	Coef.	P				
Tobacco use												
Alcohol use					-0.004	0.000	0.004	0.009				
					(0.004)	(0.005)	(0.006)	(0.008)				
Substance use					-0.007	-0.005	-0.019	0.000	**			
					(0.009)	(0.005)	(0.009)	(0.012)				
Mental health					-0.011	0.004	0.008	0.009				
					(0.013)	(0.010)	(0.014)	(0.016)				
All					-0.014	-0.011	-0.018	-0.002				
					(0.011)	(0.008)	(0.011)	(0.014)				
Other ICD groupings												
All substance use disorder/abuse					-0.010	-0.002	-0.018	-0.001				
					(0.011)	(0.008)	(0.012)	(0.014)				

Table 20 Crime outcomes, all years

	MB EYH				NB EYH				NB LA		NB EYH LA	
	Low-income		All		Low-income		All		Coef.	P	Coef.	P
	Coef.	P	Coef.	P	Coef.	P	Coef.	P				
LILE												
Any contact			0.038		0.003			0.018			0.005	
			(0.048)		(0.026)			(0.028)			(0.027)	
Any conviction			-0.016		0.000			-0.029			-0.002	
			(0.037)		(0.020)			(0.021)			(0.023)	
# of charges			2.734	**	-0.068			-0.500			0.024	
			(1.183)		(0.356)			(0.322)			(0.381)	
# of convictions			0.923	**	0.006			-0.389	*		-0.003	
			(0.456)		(0.245)			(0.209)			(0.250)	
Any crimes against person			0.060	*	0.001			-0.004			0.001	
			(0.036)		(0.020)			(0.020)			(0.021)	
Any crimes against property			0.015		-0.016			0.002			0.022	
			(0.037)		(0.017)			(0.019)			(0.020)	
Any administration of justice			0.001		-0.006			0.012			0.014	
			(0.036)		(0.015)			(0.018)			(0.019)	
Any other crime code			0.034		-0.011			-0.010			-0.011	
			(0.028)		(0.011)			(0.013)			(0.012)	
Any crime code traffic			-0.005		0.008			-0.016			-0.008	
			(0.026)		(0.018)			(0.017)			(0.017)	
Any other federal statute			0.021		0.000			0.025			0.013	
			(0.029)		(0.013)			(0.016)			(0.015)	
Any conviction for crimes against person			0.042		-0.004			-0.023			0.000	
			(0.026)		(0.016)			(0.018)			(0.018)	
Any conviction for crimes against property			0.017		-0.011			-0.015			0.021	
			(0.024)		(0.016)			(0.017)			(0.020)	
Any conviction related to administration of justice			0.034		-0.008			0.001			-0.004	
			(0.026)		(0.014)			(0.017)			(0.017)	

	MB EYH				NB EYH				NB LA		NB EYH LA	
	Low-income		All		Low-income		All		Coef.	P	Coef.	P
	Coef.	P	Coef.	P	Coef.	P	Coef.	P				
Any conviction for other crime codes			0.024		-0.005			-0.003			-0.009	
			(0.019)		(0.009)			(0.011)			(0.011)	
Any conviction for crime code traffic			0.000		0.008			-0.015			-0.003	
			(0.024)		(0.016)			(0.016)			(0.017)	
Any conviction for other federal statute			0.023		0.005			0.011			0.021	
			(0.026)		(0.011)			(0.013)			(0.014)	
FGF												
Any contact	0.032		0.030		0.001		0.001		-0.008		0.005	
	(0.074)		(0.040)		(0.033)		(0.025)		(0.032)		(0.032)	
Any conviction	-0.019		-0.020		-0.021		-0.025		-0.044	*	-0.016	
	(0.055)		(0.035)		(0.028)		(0.022)		(0.026)		(0.028)	
# of charges	3.393	*	2.199	***	-0.017		0.126		-0.502		0.217	
	(1.779)		(0.843)		(0.435)		(0.324)		(0.361)		(0.468)	
# of convictions	1.014		0.688	**	0.073		0.125		-0.334		0.127	
	(0.669)		(0.325)		(0.300)		(0.221)		(0.232)		(0.315)	
Any crimes against person	0.060		0.029		0.002		-0.006		-0.002		0.007	
	(0.048)		(0.028)		(0.025)		(0.021)		(0.025)		(0.026)	
Any crimes against property	0.003		0.011		-0.009		-0.001		-0.008		0.034	
	(0.054)		(0.032)		(0.024)		(0.019)		(0.024)		(0.025)	
Any administration of justice	-0.020		-0.008		0.010		0.007		-0.002		0.016	
	(0.058)		(0.032)		(0.021)		(0.017)		(0.020)		(0.022)	
Any other crime code	0.060	*	0.023		-0.017		0.004		-0.019		-0.013	
	(0.033)		(0.020)		(0.015)		(0.013)		(0.016)		(0.016)	
Any crime code traffic	-0.008		0.001		0.000		-0.004		-0.033		-0.017	
	(0.042)		(0.025)		(0.024)		(0.018)		(0.021)		(0.020)	
Any other federal statute	0.037		0.024		0.007		0.005		0.000		-0.001	
	(0.048)		(0.026)		(0.019)		(0.015)		(0.017)		(0.019)	
Any conviction for crimes against person	0.042		0.013		-0.001		-0.011		-0.019		-0.001	
	(0.032)		(0.020)		(0.022)		(0.017)		(0.020)		(0.023)	

	MB EYH				NB EYH				NB LA		NB EYH LA	
	Low-income		All		Low-income		All		Coef.	P	Coef.	P
	Coef.	P	Coef.	P	Coef.	P	Coef.	P				
Any conviction for crimes against property	-0.010		-0.008		-0.002		-0.001		-0.033		0.024	
	(0.042)		(0.023)		(0.023)		(0.018)		(0.021)		(0.024)	
Any conviction related to administration of justice	0.016		0.027		0.000		0.004		-0.011		0.001	
	(0.038)		(0.020)		(0.019)		(0.017)		(0.019)		(0.018)	
Any conviction for other crime codes	0.030		0.015		-0.005		0.007		-0.001		0.000	
	(0.028)		(0.015)		(0.011)		(0.009)		(0.013)		(0.012)	
Any conviction for crime code traffic	-0.008		0.008		-0.004		-0.014		-0.030		-0.018	
	(0.042)		(0.025)		(0.023)		(0.017)		(0.020)		(0.020)	
Any conviction for other federal statute	0.034		0.024		0.005		0.005		-0.003		0.009	
	(0.039)		(0.021)		(0.016)		(0.013)		(0.016)		(0.018)	
Males												
Any contact	-0.032		0.030		0.017		0.003		-0.006		-0.011	
	(0.077)		(0.033)		(0.049)		(0.030)		(0.043)		(0.043)	
Any conviction	-0.021		0.012		0.027		-0.018		-0.008		0.003	
	(0.056)		(0.021)		(0.037)		(0.021)		(0.038)		(0.036)	
# of charges	1.803		2.127	***	-0.006		-0.028		-1.158	**	-0.258	
	(1.589)		(0.733)		(0.780)		(0.360)		(0.557)		(0.687)	
# of convictions	0.518		0.745	***	0.232		0.019		-0.693	*	-0.102	
	(0.626)		(0.282)		(0.522)		(0.248)		(0.359)		(0.445)	
Any crimes against person	-0.003		0.007		-0.005		-0.023		-0.032		-0.014	
	(0.056)		(0.023)		(0.037)		(0.020)		(0.031)		(0.034)	
Any crimes against property	0.024		0.060	**	-0.006		-0.003		-0.021		0.026	
	(0.048)		(0.025)		(0.036)		(0.017)		(0.032)		(0.033)	
Any administration of justice	0.009		0.035		0.028		0.001		0.004		0.017	
	(0.052)		(0.025)		(0.031)		(0.017)		(0.026)		(0.030)	
Any other crime code	-0.004		0.005		-0.012		0.001		-0.024		-0.019	
	(0.043)		(0.022)		(0.020)		(0.012)		(0.022)		(0.022)	
Any crime code traffic	0.003		0.024		0.021		0.018		-0.011		-0.025	
	(0.045)		(0.023)		(0.036)		(0.020)		(0.029)		(0.027)	

	MB EYH				NB EYH				NB LA		NB EYH LA	
	Low-income		All		Low-income		All		Coef.	P	Coef.	P
	Coef.	P	Coef.	P	Coef.	P	Coef.	P				
Any other federal statute	0.010 (0.050)		0.041 (0.018)	**	0.013 (0.031)		0.011 (0.017)		-0.004 (0.024)		0.019 (0.030)	
Any conviction for crimes against person	0.005 (0.043)		0.022 (0.017)		0.005 (0.032)		-0.016 (0.017)		-0.041 (0.026)		-0.022 (0.029)	
Any conviction for crimes against property	-0.003 (0.040)		0.025 (0.016)		0.008 (0.034)		-0.002 (0.016)		-0.025 (0.029)		0.031 (0.033)	
Any conviction related to administration of justice	0.029 (0.042)		0.041 (0.019)	**	0.011 (0.029)		-0.001 (0.016)		-0.007 (0.025)		-0.008 (0.027)	
Any conviction for other crime codes	-0.021 (0.033)		-0.018 (0.015)		0.001 (0.018)		0.007 (0.011)		-0.020 (0.019)		-0.006 (0.020)	
Any conviction for crime code traffic	-0.002 (0.046)		0.024 (0.022)		0.031 (0.034)		0.018 (0.019)		-0.003 (0.027)		-0.011 (0.024)	
Any conviction for other federal statute	0.009 (0.044)		0.036 (0.017)	**	0.034 (0.025)		0.013 (0.014)		0.005 (0.021)		0.041 (0.025)	
Females												
Any contact	0.007 (0.062)		0.004 (0.025)		0.011 (0.029)		0.019 (0.016)		0.019 (0.029)		-0.002 (0.024)	
Any conviction	0.020 (0.045)		-0.005 (0.016)		0.004 (0.019)		0.006 (0.012)		-0.025 (0.015)		-0.007 (0.018)	
# of charges	-0.338 (0.329)		0.062 (0.188)		-0.175 (0.186)		-0.054 (0.096)		-0.008 (0.215)		0.029 (0.205)	
# of convictions	-0.024 (0.066)		0.055 (0.077)		-0.182 (0.139)		-0.074 (0.072)		-0.107 (0.147)		-0.029 (0.131)	
Any crimes against person	0.028 (0.048)		0.005 (0.016)		0.005 (0.020)		0.012 (0.012)		0.016 (0.023)		0.002 (0.019)	
Any crimes against property	-0.032 (0.034)		-0.004 (0.015)		-0.016 (0.017)		-0.005 (0.011)		0.007 (0.019)		0.005 (0.018)	
Any administration of justice	-0.014 (0.019)		-0.011 (0.011)		-0.011 (0.013)		0.003 (0.008)		-0.005 (0.017)		0.004 (0.016)	

	MB EYH				NB EYH				NB LA		NB EYH LA	
	Low-income		All		Low-income		All		Coef.	P	Coef.	P
	Coef.	P	Coef.	P	Coef.	P	Coef.	P				
Any other crime code	0.009 (0.013)		0.011 (0.006)	*	-0.003 (0.010)		0.005 (0.006)		0.003 (0.013)		-0.005 (0.010)	
Any crime code traffic	-0.033 (0.030)		-0.009 (0.015)		-0.003 (0.015)		-0.006 (0.008)		-0.010 (0.012)		-0.006 (0.012)	
Any other federal statute	0.005 (0.029)		-0.005 (0.010)		-0.001 (0.008)		0.000 (0.006)		0.017 (0.013)		0.009 (0.011)	
Any conviction for crimes against person	0.032 (0.027)		-0.002 (0.011)		-0.001 (0.015)		-0.001 (0.009)		-0.003 (0.016)		0.005 (0.015)	
Any conviction for crimes against property	-0.015 (0.020)		-0.013 (0.010)		-0.008 (0.016)		-0.002 (0.010)		-0.010 (0.014)		0.003 (0.017)	
Any conviction related to administration of justice	0.000 (0.000)		-0.001 (0.007)		-0.019 (0.008)	**	-0.005 (0.007)		0.003 (0.014)		-0.004 (0.012)	
Any conviction for other crime codes	0.000 (0.000)		0.000 (0.000)		-0.004 (0.006)		0.002 (0.004)		0.008 (0.011)		-0.010 (0.006)	
Any conviction for crime code traffic	-0.033 (0.030)		-0.005 (0.014)		-0.001 (0.009)		-0.004 (0.005)		-0.003 (0.009)		0.003 (0.010)	
Any conviction for other federal statute	0.021 (0.024)		0.003 (0.006)		-0.006 (0.004)		-0.003 (0.005)		0.004 (0.011)		0.011 (0.011)	
Students in Anglophone Schools (NB Only)												
Any contact					0.033 (0.035)		0.017 (0.021)		-0.003 (0.035)		0.000 (0.034)	
Any conviction					0.025 (0.025)		-0.005 (0.016)		-0.039 (0.024)		-0.003 (0.027)	
# of charges					0.162 (0.440)		0.039 (0.231)		-0.543 (0.360)		0.261 (0.460)	
# of convictions					0.181 (0.308)		0.025 (0.163)		-0.439 (0.239)	*	0.148 (0.308)	
Any crimes against person					0.011 (0.026)		-0.002 (0.015)		-0.015 (0.026)		-0.010 (0.024)	

	MB EYH				NB EYH				NB LA		NB EYH LA	
	Low-income		All		Low-income		All		Coef.	P	Coef.	P
	Coef.	P	Coef.	P	Coef.	P	Coef.	P				
Any crimes against property					-0.017		-0.006		-0.008		0.025	
					(0.024)		(0.014)		(0.024)		(0.026)	
Any administration of justice					0.020		0.008		-0.001		0.032	
					(0.021)		(0.012)		(0.020)		(0.024)	
Any other crime code					-0.011		0.004		-0.011		-0.006	
					(0.014)		(0.009)		(0.016)		(0.015)	
Any crime code traffic					0.015		0.004		-0.024		-0.016	
					(0.023)		(0.014)		(0.020)		(0.020)	
Any other federal statute					0.017		0.011		0.016		0.027	
					(0.019)		(0.012)		(0.020)		(0.021)	
Any conviction for crimes against person					0.011		-0.008		-0.028		-0.008	
					(0.020)		(0.012)		(0.020)		(0.020)	
Any conviction for crimes against property					-0.001		-0.003		-0.032		0.025	
					(0.023)		(0.013)		(0.021)		(0.027)	
Any conviction related to administration of justice					0.001		-0.001		-0.001		0.009	
					(0.018)		(0.011)		(0.019)		(0.020)	
Any conviction for other crime codes					-0.005		0.003		-0.004		-0.007	
					(0.012)		(0.007)		(0.014)		(0.013)	
Any conviction for crime code traffic					0.027		0.008		-0.010		-0.001	
					(0.022)		(0.012)		(0.017)		(0.018)	
Any conviction for other federal statute					0.019		0.010		0.004		0.039	**
					(0.016)		(0.010)		(0.016)		(0.019)	
Students in Francophone Schools (NB Only)												
Any contact					-0.027		0.005		0.021		0.011	
					(0.029)		(0.017)		(0.031)		(0.030)	
Any conviction					-0.008		-0.003		0.018		0.022	
					(0.024)		(0.014)		(0.025)		(0.025)	
# of charges					-0.665	*	-0.236		-0.605	*	-0.341	
					(0.403)		(0.222)		(0.362)		(0.446)	

	MB EYH				NB EYH				NB LA		NB EYH LA	
	Low-income		All		Low-income		All		Coef.	P	Coef.	P
	Coef.	P	Coef.	P	Coef.	P	Coef.	P				
# of convictions					-0.375		-0.154			-0.338		-0.212
					(0.254)		(0.149)			(0.237)		(0.280)
Any crimes against person					-0.011		-0.004			-0.008		0.025
					(0.018)		(0.010)			(0.018)		(0.024)
Any crimes against property					-0.005		-0.001			-0.005		0.023
					(0.017)		(0.011)			(0.018)		(0.022)
Any administration of justice					-0.019		-0.005			-0.006		-0.009
					(0.017)		(0.009)			(0.019)		(0.017)
Any other crime code					0.000		0.003			-0.011		-0.011
					(0.013)		(0.007)			(0.013)		(0.012)
Any crime code traffic					-0.011		0.012			0.014		-0.012
					(0.020)		(0.011)			(0.020)		(0.019)
Any other federal statute					-0.010		-0.005			-0.006		-0.003
					(0.015)		(0.010)			(0.014)		(0.017)
Any conviction for crimes against person					-0.005		-0.002			-0.018		0.015
					(0.017)		(0.008)			(0.016)		(0.021)
Any conviction for crimes against property					-0.003		-0.002			0.005		0.023
					(0.017)		(0.010)			(0.018)		(0.021)
Any conviction related to administration of justice					-0.017		-0.002			-0.011		-0.011
					(0.016)		(0.009)			(0.018)		(0.015)
Any conviction for other crime codes					0.007		0.006			-0.009		-0.008
					(0.013)		(0.007)			(0.012)		(0.010)
Any conviction for crime code traffic					-0.017		0.007			0.001		-0.005
					(0.018)		(0.010)			(0.018)		(0.019)
Any conviction for other federal statute					-0.005		-0.004			-0.005		0.003
					(0.014)		(0.010)			(0.013)		(0.016)

Table 21 Crime outcomes, 1 to 5 years following the intervention

	MB EYH				NB EYH				NB LA		NB EYH LA	
	Low-income		All		Low-income		All		Coef.	P	Coef.	P
	Coef.	P	Coef.	P	Coef.	P	Coef.	P				
LILE												
Any contact			0.010		-0.016				-0.035	*	-0.007	
			(0.037)		(0.020)			(0.020)			(0.022)	
Any conviction			-0.002		0.006			-0.037	**	-0.005		
			(0.028)		(0.018)			(0.018)			(0.019)	
# of charges			1.443	**	0.225			-0.161		0.252		
			(0.642)		(0.248)			(0.100)		(0.200)		
# of convictions			0.483	*	0.208			-0.109		0.154		
			(0.268)		(0.178)			(0.071)		(0.131)		
Any crimes against person			0.066	**	-0.009			-0.029	*	-0.010		
			(0.027)		(0.015)			(0.015)		(0.016)		
Any crimes against property			0.021		0.002			-0.013		0.020		
			(0.030)		(0.015)			(0.015)		(0.018)		
Any administration of justice			0.000		-0.002			-0.010		-0.007		
			(0.022)		(0.011)			(0.012)		(0.012)		
Any other crime code			0.034	**	0.000			-0.003		-0.005		
			(0.015)		(0.007)			(0.010)		(0.010)		
Any crime code traffic			0.001		0.005			-0.014	*	0.000		
			(0.017)		(0.010)			(0.008)		(0.009)		
Any other federal statute			0.021		-0.004			0.003		0.017		
			(0.022)		(0.010)			(0.011)		(0.014)		
Any conviction for crimes against person			0.042	**	0.001			-0.024	*	-0.001		
			(0.019)		(0.013)			(0.013)		(0.014)		
Any conviction for crimes against property			0.011		0.006			-0.017		0.020		
			(0.020)		(0.014)			(0.013)		(0.017)		
Any conviction related to administration of justice			0.001		-0.005			-0.012		-0.011		
			(0.019)		(0.011)			(0.012)		(0.012)		

	MB EYH				NB EYH				NB LA		NB EYH LA	
	Low-income		All		Low-income		All		Coef.	P	Coef.	P
	Coef.	P	Coef.	P	Coef.	P	Coef.	P				
Any conviction for other crime codes			0.032	**			0.005		-0.003		-0.002	
			(0.013)				(0.007)		(0.008)		(0.009)	
Any conviction for crime code traffic			0.001				0.005		-0.016	**	-0.002	
			(0.017)				(0.010)		(0.008)		(0.009)	
Any conviction for other federal statute			0.024				0.005		0.005		0.020	*
			(0.015)				(0.009)		(0.010)		(0.012)	
FGF												
Any contact	-0.021		-0.003		-0.016		-0.011		-0.057	**	-0.009	
	(0.060)		(0.033)		(0.029)		(0.022)		(0.025)		(0.025)	
Any conviction	-0.015		-0.016		-0.004		-0.001		-0.048	**	-0.014	
	(0.041)		(0.023)		(0.026)		(0.020)		(0.020)		(0.022)	
# of charges	1.605	*	1.054	**	0.164		0.167		-0.217		0.318	
	(0.967)		(0.434)		(0.223)		(0.166)		(0.140)		(0.281)	
# of convictions	0.527		0.293	*	0.200		0.184		-0.129		0.161	
	(0.408)		(0.173)		(0.172)		(0.127)		(0.100)		(0.183)	
Any crimes against person	0.055		0.034	*	0.001		-0.001		-0.027		-0.008	
	(0.035)		(0.019)		(0.020)		(0.016)		(0.019)		(0.019)	
Any crimes against property	0.004		0.001		0.000		0.001		-0.024		0.007	
	(0.047)		(0.026)		(0.022)		(0.017)		(0.019)		(0.022)	
Any administration of justice	-0.030		-0.001		0.001		0.001		-0.016		-0.011	
	(0.039)		(0.020)		(0.017)		(0.013)		(0.017)		(0.014)	
Any other crime code	0.046	**	0.024	*	-0.005		0.007		-0.006		-0.011	
	(0.019)		(0.013)		(0.010)		(0.008)		(0.014)		(0.012)	
Any crime code traffic	-0.009		-0.004		0.001		-0.002		-0.018	*	-0.006	
	(0.024)		(0.013)		(0.015)		(0.011)		(0.010)		(0.011)	
Any other federal statute	0.025		0.021		-0.008		0.000		-0.010		0.003	
	(0.036)		(0.020)		(0.014)		(0.011)		(0.013)		(0.016)	
Any conviction for crimes against person	0.049	**	0.027	*	0.006		0.002		-0.021		-0.002	
	(0.023)		(0.014)		(0.019)		(0.015)		(0.017)		(0.017)	

	MB EYH				NB EYH				NB LA		NB EYH LA	
	Low-income		All		Low-income		All		Coef.	P	Coef.	P
	Coef.	P	Coef.	P	Coef.	P	Coef.	P				
Any conviction for crimes against property	-0.006 (0.035)		-0.004 (0.018)		0.005 (0.022)		0.005 (0.018)		-0.033 (0.016)	**	0.003 (0.020)	
Any conviction related to administration of justice	-0.009 (0.035)		0.000 (0.017)		-0.007 (0.016)		-0.003 (0.012)		-0.014 (0.017)		-0.010 (0.014)	
Any conviction for other crime codes	0.039 (0.019)	**	0.026 (0.010)	**	0.003 (0.009)		0.012 (0.008)		0.003 (0.012)		-0.001 (0.011)	
Any conviction for crime code traffic	-0.009 (0.024)		-0.004 (0.013)		0.001 (0.015)		-0.002 (0.011)		-0.021 (0.010)	**	-0.011 (0.010)	
Any conviction for other federal statute	0.022 (0.022)		0.021 (0.012)	*	0.002 (0.013)		0.007 (0.011)		-0.001 (0.014)		0.009 (0.014)	
Males												
Any contact	-0.021 (0.055)		0.035 (0.024)		0.016 (0.040)		-0.005 (0.021)		-0.045 (0.035)		-0.001 (0.038)	
Any conviction	-0.029 (0.043)		0.016 (0.013)		0.024 (0.037)		-0.004 (0.019)		-0.030 (0.032)		-0.002 (0.033)	
# of charges	1.216 (1.024)		1.264 (0.467)	***	0.816 (0.511)		0.285 (0.260)		-0.075 (0.173)		0.506 (0.328)	
# of convictions	0.427 (0.434)		0.467 (0.184)	**	0.665 (0.372)	*	0.211 (0.193)		-0.026 (0.128)		0.313 (0.213)	
Any crimes against person	0.063 (0.029)	**	0.038 (0.014)	***	0.012 (0.026)		-0.003 (0.014)		-0.039 (0.022)	*	-0.023 (0.024)	
Any crimes against property	0.015 (0.040)		0.054 (0.020)	***	0.016 (0.035)		0.001 (0.016)		-0.006 (0.028)		0.025 (0.031)	
Any administration of justice	-0.026 (0.031)		0.026 (0.017)		0.018 (0.027)		0.000 (0.014)		0.005 (0.022)		-0.007 (0.024)	
Any other crime code	0.014 (0.022)		0.022 (0.012)	*	0.014 (0.014)		0.010 (0.008)		0.009 (0.016)		0.001 (0.015)	
Any crime code traffic	-0.007 (0.023)		-0.009 (0.012)		0.029 (0.024)		0.015 (0.012)		-0.022 (0.014)		0.001 (0.016)	

	MB EYH				NB EYH				NB LA		NB EYH LA	
	Low-income		All		Low-income		All		Coef.	P	Coef.	P
	Coef.	P	Coef.	P	Coef.	P	Coef.	P				
Any other federal statute	0.011 (0.040)		0.044 (0.015)	***	-0.001 (0.023)		0.004 (0.012)		-0.010 (0.019)		0.022 (0.026)	
Any conviction for crimes against person	0.027 (0.026)		0.029 (0.010)	***	0.014 (0.023)		0.000 (0.011)		-0.029 (0.019)		-0.014 (0.020)	
Any conviction for crimes against property	0.000 (0.033)		0.023 (0.013)	*	0.016 (0.035)		0.001 (0.016)		-0.019 (0.024)		0.016 (0.030)	
Any conviction related to administration of justice	-0.010 (0.029)		0.024 (0.013)	*	0.010 (0.026)		-0.002 (0.013)		0.001 (0.022)		-0.011 (0.023)	
Any conviction for other crime codes	0.004 (0.012)		0.014 (0.007)	**	0.021 (0.014)		0.014 (0.007)	*	0.011 (0.014)		0.010 (0.014)	
Any conviction for crime code traffic	-0.007 (0.023)		-0.009 (0.012)		0.031 (0.023)		0.014 (0.012)		-0.020 (0.014)		-0.001 (0.015)	
Any conviction for other federal statute	0.002 (0.029)		0.038 (0.012)	***	0.021 (0.019)		0.012 (0.011)		0.010 (0.016)		0.039 (0.021)	*
Females												
Any contact	-0.025 (0.038)		-0.013 (0.018)		-0.002 (0.017)		0.004 (0.010)		-0.022 (0.014)		-0.009 (0.018)	
Any conviction	0.015 (0.020)		0.000 (0.010)		0.010 (0.015)		0.002 (0.009)		-0.028 (0.010)	***	-0.005 (0.014)	
# of charges	-0.284 (0.278)		-0.136 (0.096)		-0.048 (0.054)		-0.011 (0.035)		-0.133 (0.064)	**	-0.041 (0.069)	
# of convictions	-0.029 (0.055)		-0.028 (0.023)		-0.018 (0.043)		-0.004 (0.026)		-0.109 (0.047)	**	-0.026 (0.051)	
Any crimes against person	-0.004 (0.033)		-0.010 (0.011)		-0.008 (0.011)		-0.001 (0.007)		-0.015 (0.012)		0.001 (0.014)	
Any crimes against property	-0.015 (0.020)		-0.008 (0.011)		0.014 (0.013)		0.009 (0.009)		-0.010 (0.006)	*	0.011 (0.012)	
Any administration of justice	0.000 (0.000)		0.003 (0.005)		-0.009 (0.006)		-0.004 (0.004)		-0.015 (0.008)	**	-0.010 (0.006)	

	MB EYH				NB EYH				NB LA		NB EYH LA	
	Low-income		All		Low-income		All		Coef.	P	Coef.	P
	Coef.	P	Coef.	P	Coef.	P	Coef.	P				
Any other crime code	0.000		0.000		-0.007	*	-0.001		-0.005		-0.005	
	(0.000)		(0.000)		(0.004)		(0.003)		(0.007)		(0.008)	
Any crime code traffic	-0.005		0.000		-0.006		-0.004		-0.003		-0.001	
	(0.010)		(0.007)		(0.004)		(0.003)		(0.005)		(0.006)	
Any other federal statute	-0.016		-0.005		-0.006		0.001		-0.005		0.006	
	(0.015)		(0.007)		(0.004)		(0.004)		(0.008)		(0.010)	
Any conviction for crimes against person	0.020		-0.001		-0.003		-0.002		-0.013		0.006	
	(0.019)		(0.006)		(0.010)		(0.006)		(0.010)		(0.013)	
Any conviction for crimes against property	-0.015		-0.011		0.019		0.010		-0.008	*	0.014	
	(0.020)		(0.008)		(0.013)		(0.008)		(0.004)		(0.011)	
Any conviction related to administration of justice	0.000		-0.002		-0.009		-0.004		-0.011	*	-0.010	
	(0.000)		(0.004)		(0.006)		(0.004)		(0.007)		(0.006)	
Any conviction for other crime codes	0.000		0.000		-0.006		-0.001		-0.008		-0.009	
	(0.000)		(0.000)		(0.004)		(0.003)		(0.006)		(0.006)	
Any conviction for crime code traffic	-0.005		0.000		-0.006		-0.004		-0.006		-0.001	
	(0.010)		(0.007)		(0.004)		(0.003)		(0.004)		(0.006)	
Any conviction for other federal statute	0.000		-0.002		-0.006		0.000		-0.009		0.006	
	(0.000)		(0.004)		(0.004)		(0.004)		(0.007)		(0.010)	
Students in Anglophone Schools (NB Only)												
Any contact					0.010		0.001		-0.053	**	0.000	
					(0.028)		(0.016)		(0.024)		(0.027)	
Any conviction					0.016		-0.001		-0.044	**	0.000	
					(0.024)		(0.015)		(0.020)		(0.022)	
# of charges					0.428		0.171		-0.181		0.404	
					(0.300)		(0.174)		(0.131)		(0.270)	
# of convictions					0.353		0.130		-0.137		0.258	
					(0.221)		(0.131)		(0.099)		(0.177)	
Any crimes against person					-0.005		-0.006		-0.042	**	-0.009	
					(0.018)		(0.011)		(0.018)		(0.018)	

	MB EYH				NB EYH				NB LA		NB EYH LA	
	Low-income		All		Low-income		All		Coef.	P	Coef.	P
	Coef.	P	Coef.	P	Coef.	P	Coef.	P				
Any crimes against property					0.013		0.005		-0.015		0.021	
					(0.022)		(0.013)		(0.018)		(0.022)	
Any administration of justice					0.002		-0.004		-0.014		0.003	
					(0.016)		(0.010)		(0.017)		(0.017)	
Any other crime code					0.001		0.006		0.002		0.000	
					(0.010)		(0.006)		(0.013)		(0.012)	
Any crime code traffic					0.019		0.008		-0.015	**	0.004	
					(0.015)		(0.008)		(0.007)		(0.011)	
Any other federal statute					0.001		0.005		-0.006		0.025	
					(0.013)		(0.008)		(0.014)		(0.018)	
Any conviction for crimes against person					0.001		-0.005		-0.031	**	0.002	
					(0.016)		(0.009)		(0.015)		(0.015)	
Any conviction for crimes against property					0.015		0.005		-0.026		0.017	
					(0.022)		(0.012)		(0.016)		(0.022)	
Any conviction related to administration of justice					-0.002		-0.005		-0.013		-0.003	
					(0.015)		(0.009)		(0.017)		(0.016)	
Any conviction for other crime codes					0.003		0.007		0.001		-0.001	
					(0.010)		(0.006)		(0.012)		(0.010)	
Any conviction for crime code traffic					0.019		0.009		-0.015	**	0.001	
					(0.015)		(0.008)		(0.007)		(0.010)	
Any conviction for other federal statute					0.012		0.010		-0.003		0.030	*
					(0.011)		(0.008)		(0.012)		(0.015)	
Students in Francophone Schools (NB Only)												
Any contact					-0.002		0.002		0.003		0.003	
					(0.022)		(0.012)		(0.023)		(0.024)	
Any conviction					0.008		0.005		0.002		-0.001	
					(0.021)		(0.012)		(0.021)		(0.020)	
# of charges					-0.027		0.000		-0.038		0.067	
					(0.139)		(0.073)		(0.119)		(0.154)	

	MB EYH				NB EYH				NB LA		NB EYH LA	
	Low-income		All		Low-income		All		Coef.	P	Coef.	P
	Coef.	P	Coef.	P	Coef.	P	Coef.	P				
# of convictions					0.012		0.008			0.018		0.015
					(0.097)		(0.052)			(0.091)		(0.079)
Any crimes against person					0.008		0.004			-0.003		0.000
					(0.014)		(0.008)			(0.014)		(0.013)
Any crimes against property					0.007		0.004			0.006		0.024
					(0.015)		(0.008)			(0.012)		(0.018)
Any administration of justice					-0.001		0.004			-0.004		-0.017
					(0.012)		(0.006)			(0.012)		(0.009)
Any other crime code					0.003		0.002			-0.006		0.000
					(0.009)		(0.005)			(0.008)		(0.009)
Any crime code traffic					-0.006		-0.002			-0.002		-0.008
					(0.012)		(0.007)			(0.012)		(0.010)
Any other federal statute					-0.008		-0.003			-0.011		-0.004
					(0.012)		(0.008)			(0.011)		(0.013)
Any conviction for crimes against person					0.007		0.007			-0.006		-0.001
					(0.013)		(0.007)			(0.013)		(0.012)
Any conviction for crimes against property					0.015		0.007			0.013		0.026
					(0.014)		(0.008)			(0.012)		(0.015)
Any conviction related to administration of justice					-0.004		0.002			-0.001		-0.014
					(0.012)		(0.006)			(0.011)		(0.008)
Any conviction for other crime codes					0.010		0.006			0.000		0.006
					(0.008)		(0.004)			(0.008)		(0.008)
Any conviction for crime code traffic					-0.003		-0.005			-0.003		-0.004
					(0.012)		(0.006)			(0.011)		(0.010)
Any conviction for other federal statute					-0.007		-0.004			-0.004		0.003
					(0.010)		(0.007)			(0.011)		(0.012)

Table 22 Crime outcomes, 6 to 10 years following the intervention

	MB EYH				NB EYH				NB LA		NB EYH LA	
	Low-income		All		Low-income		All		Coef.	P	Coef.	P
	Coef.	P	Coef.	P	Coef.	P	Coef.	P				
LILE												
Any contact			0.039		0.023			0.028			0.024	
			(0.038)		(0.019)			(0.022)			(0.021)	
Any conviction			-0.003		0.005			0.008			0.002	
			(0.019)		(0.010)			(0.012)			(0.011)	
# of charges			0.578	**	-0.045			-0.186			-0.115	
			(0.272)		(0.123)			(0.135)			(0.143)	
# of convictions			0.183	*	-0.032			-0.152	*		-0.081	
			(0.095)		(0.080)			(0.088)			(0.096)	
Any crimes against person			0.021		0.019			0.019	*		0.013	
			(0.021)		(0.013)			(0.012)			(0.012)	
Any crimes against property			0.028		-0.013			-0.010			0.011	
			(0.019)		(0.011)			(0.013)			(0.014)	
Any administration of justice			0.060	***	-0.006			-0.009			0.002	
			(0.023)		(0.010)			(0.012)			(0.013)	
Any other crime code			0.031	**	-0.006			-0.003			-0.009	
			(0.014)		(0.006)			(0.008)			(0.007)	
Any crime code traffic			-0.005		0.011			-0.006			-0.007	
			(0.017)		(0.012)			(0.012)			(0.013)	
Any other federal statute			-0.002		0.009			0.014			0.002	
			(0.024)		(0.006)			(0.010)			(0.007)	
Any conviction for crimes against person			0.005		0.012			-0.003			0.008	
			(0.017)		(0.011)			(0.010)			(0.010)	
Any conviction for crimes against property			0.023	*	-0.013			-0.018	*		0.006	
			(0.014)		(0.009)			(0.010)			(0.013)	
Any conviction related to administration of justice			0.032		-0.008			-0.013			-0.003	
			(0.020)		(0.009)			(0.011)			(0.012)	

	MB EYH				NB EYH				NB LA		NB EYH LA		
	Low-income		All		Low-income		All		Coef.	P	Coef.	P	
	Coef.	P	Coef.	P	Coef.	P	Coef.	P					
Any conviction for other crime codes			0.007		-0.005					-0.002			-0.008
			(0.007)		(0.004)					(0.007)			(0.005)
Any conviction for crime code traffic			0.003		0.008					-0.005			-0.002
			(0.015)		(0.012)					(0.011)			(0.013)
Any conviction for other federal statute			0.008		0.008					0.004			0.001
			(0.021)		(0.005)					(0.007)			(0.006)
FGF													
Any contact	0.050		0.032		0.027		0.021			-0.001			0.009
	(0.062)		(0.035)		(0.027)		(0.021)			(0.024)			(0.025)
Any conviction	0.016		0.006		-0.008		-0.014			0.001			-0.011
	(0.031)		(0.021)		(0.014)		(0.012)			(0.016)			(0.013)
# of charges	0.809	*	0.450	*	0.059		0.059			-0.158			-0.091
	(0.444)		(0.243)		(0.185)		(0.137)			(0.130)			(0.143)
# of convictions	0.218		0.143		-0.002		0.023			-0.123			-0.070
	(0.150)		(0.087)		(0.127)		(0.095)			(0.089)			(0.107)
Any crimes against person	0.039		0.003		0.011		0.009			-0.003			0.004
	(0.024)		(0.015)		(0.018)		(0.014)			(0.014)			(0.014)
Any crimes against property	0.029		0.021		-0.005		-0.004			-0.019			0.012
	(0.025)		(0.016)		(0.017)		(0.013)			(0.016)			(0.020)
Any administration of justice	0.044		0.035	*	-0.002		0.003			-0.014			-0.002
	(0.037)		(0.021)		(0.016)		(0.013)			(0.015)			(0.016)
Any other crime code	0.050	**	0.016		-0.005		-0.002			-0.012			-0.004
	(0.024)		(0.012)		(0.010)		(0.008)			(0.008)			(0.010)
Any crime code traffic	-0.013		0.004		0.012		-0.004			-0.006			-0.012
	(0.031)		(0.020)		(0.018)		(0.014)			(0.016)			(0.015)
Any other federal statute	0.022		0.013		0.019	*	0.015	*		0.011			-0.002
	(0.039)		(0.020)		(0.010)		(0.009)			(0.010)			(0.007)
Any conviction for crimes against person	0.016		-0.009		0.010		0.009			-0.008			0.001
	(0.020)		(0.013)		(0.016)		(0.011)			(0.012)			(0.012)

	MB EYH				NB EYH				NB LA		NB EYH LA	
	Low-income		All		Low-income		All		Coef.	P	Coef.	P
	Coef.	P	Coef.	P	Coef.	P	Coef.	P				
Any conviction for crimes against property	0.016 (0.022)		0.014 (0.014)		-0.005 (0.015)		-0.003 (0.011)		-0.025 (0.012)	**	0.004 (0.017)	
Any conviction related to administration of justice	0.006 (0.031)		0.025 (0.017)		-0.005 (0.016)		0.004 (0.013)		-0.019 (0.013)		-0.007 (0.014)	
Any conviction for other crime codes	0.009 (0.011)		0.000 (0.008)		-0.005 (0.007)		-0.002 (0.005)		-0.005 (0.006)		-0.003 (0.007)	
Any conviction for crime code traffic	0.000 (0.026)		0.011 (0.019)		0.008 (0.017)		-0.007 (0.013)		-0.003 (0.015)		-0.010 (0.014)	
Any conviction for other federal statute	0.024 (0.033)		0.012 (0.018)		0.012 (0.010)		0.009 (0.008)		0.000 (0.008)		-0.006 (0.006)	
Males												
Any contact	-0.042 (0.062)		0.025 (0.028)		0.050 (0.038)		0.025 (0.021)		0.005 (0.033)		-0.001 (0.030)	
Any conviction	0.012 (0.032)		-0.001 (0.015)		0.022 (0.022)		0.000 (0.013)		0.012 (0.021)		0.004 (0.019)	
# of charges	0.170 (0.449)		0.463 (0.194)	**	-0.137 (0.275)		-0.056 (0.113)		-0.527 (0.245)	**	-0.383 (0.245)	
# of convictions	0.072 (0.167)		0.174 (0.074)	**	-0.031 (0.176)		-0.024 (0.074)		-0.353 (0.160)	**	-0.230 (0.172)	
Any crimes against person	-0.005 (0.031)		0.000 (0.015)		0.023 (0.024)		0.008 (0.012)		0.005 (0.018)		0.010 (0.017)	
Any crimes against property	0.011 (0.028)		0.028 (0.013)	**	-0.002 (0.024)		-0.008 (0.011)		-0.036 (0.021)	*	0.010 (0.024)	
Any administration of justice	0.060 (0.042)		0.062 (0.019)	***	-0.007 (0.023)		0.000 (0.011)		-0.034 (0.020)	*	-0.012 (0.021)	
Any other crime code	0.020 (0.026)		0.001 (0.016)		-0.007 (0.012)		-0.007 (0.005)		-0.010 (0.011)		-0.014 (0.010)	
Any crime code traffic	-0.006 (0.041)		0.027 (0.019)		0.039 (0.028)		0.021 (0.016)		-0.007 (0.020)		-0.013 (0.019)	

	MB EYH				NB EYH				NB LA		NB EYH LA	
	Low-income		All		Low-income		All		Coef.	P	Coef.	P
	Coef.	P	Coef.	P	Coef.	P	Coef.	P				
Any other federal statute	-0.018		0.006		0.026		0.014		0.012		-0.005	
	(0.039)		(0.015)		(0.018)		(0.009)		(0.016)		(0.011)	
Any conviction for crimes against person	-0.005		0.001		0.023		0.008		-0.018		0.005	
	(0.028)		(0.013)		(0.021)		(0.010)		(0.014)		(0.016)	
Any conviction for crimes against property	-0.020		0.008		0.008		-0.004		-0.030	*	0.014	
	(0.018)		(0.009)		(0.019)		(0.009)		(0.016)		(0.023)	
Any conviction related to administration of justice	0.025		0.043	***	-0.009		-0.001		-0.035	*	-0.022	
	(0.040)		(0.016)		(0.020)		(0.010)		(0.018)		(0.019)	
Any conviction for other crime codes	0.008		-0.006		-0.005		-0.002		-0.014		-0.012	
	(0.017)		(0.010)		(0.012)		(0.005)		(0.010)		(0.009)	
Any conviction for crime code traffic	0.015		0.036	**	0.039		0.019		-0.008		-0.006	
	(0.035)		(0.018)		(0.027)		(0.015)		(0.019)		(0.019)	
Any conviction for other federal statute	0.000		0.002		0.031	*	0.011		0.008		-0.008	
	(0.034)		(0.012)		(0.017)		(0.008)		(0.014)		(0.008)	
Females												
Any contact	0.040		0.024		0.025		0.018		0.027		0.028	
	(0.049)		(0.020)		(0.022)		(0.012)		(0.020)		(0.017)	
Any conviction	0.015		0.001		0.003		0.005		0.010		0.001	
	(0.038)		(0.013)		(0.010)		(0.007)		(0.009)		(0.008)	
# of charges	0.049		0.026		0.008		0.017		0.015		0.089	
	(0.121)		(0.044)		(0.100)		(0.052)		(0.097)		(0.113)	
# of convictions	0.015		-0.003		-0.043		-0.007		-0.005		0.034	
	(0.038)		(0.013)		(0.045)		(0.028)		(0.050)		(0.062)	
Any crimes against person	0.032		0.007		0.011		0.013		0.020		0.003	
	(0.032)		(0.010)		(0.016)		(0.009)		(0.017)		(0.009)	
Any crimes against property	-0.003		0.001		-0.018	**	-0.008		-0.003		0.005	
	(0.021)		(0.010)		(0.008)		(0.006)		(0.013)		(0.013)	
Any administration of justice	0.000		-0.003		-0.003		0.001		0.000		0.017	
	(0.000)		(0.006)		(0.007)		(0.005)		(0.009)		(0.013)	

	MB EYH				NB EYH				NB LA		NB EYH LA	
	Low-income		All		Low-income		All		Coef.	P	Coef.	P
	Coef.	P	Coef.	P	Coef.	P	Coef.	P				
Any other crime code	0.009		0.008		0.007		0.007		0.002		0.002	
	(0.013)		(0.005)		(0.008)		(0.005)		(0.008)		(0.007)	
Any crime code traffic	-0.018		0.004		0.001		-0.002		0.001		0.002	
	(0.023)		(0.010)		(0.009)		(0.006)		(0.008)		(0.007)	
Any other federal statute	0.005		0.000		0.007		0.001		0.006		0.007	
	(0.029)		(0.006)		(0.006)		(0.003)		(0.004)		(0.006)	
Any conviction for crimes against person	0.012		-0.002		-0.006		0.000		-0.003		-0.004	
	(0.019)		(0.006)		(0.011)		(0.006)		(0.012)		(0.009)	
Any conviction for crimes against property	0.000		-0.005		-0.015	*	-0.005		-0.007		0.000	
	(0.000)		(0.005)		(0.008)		(0.006)		(0.011)		(0.013)	
Any conviction related to administration of justice	0.000		0.000		-0.007	*	0.000		-0.001		0.009	
	(0.000)		(0.000)		(0.004)		(0.004)		(0.007)		(0.011)	
Any conviction for other crime codes	0.000		0.000		0.004		0.003		0.007		0.000	
	(0.000)		(0.000)		(0.004)		(0.002)		(0.006)		(0.000)	
Any conviction for crime code traffic	-0.018		0.000		-0.002		-0.002		0.006		0.006	
	(0.023)		(0.009)		(0.002)		(0.002)		(0.006)		(0.006)	
Any conviction for other federal statute	0.021		0.005		0.000		-0.002		0.000		0.007	
	(0.024)		(0.005)		(0.000)		(0.002)		(0.000)		(0.006)	
Students in Anglophone Schools (NB Only)												
Any contact					0.048	*	0.018		0.020		0.021	
					(0.028)		(0.016)		(0.023)		(0.025)	
Any conviction					0.022		0.000		0.007		0.004	
					(0.015)		(0.010)		(0.012)		(0.012)	
# of charges					0.012		-0.026		-0.226		-0.074	
					(0.143)		(0.071)		(0.143)		(0.158)	
# of convictions					0.025		-0.006		-0.160	*	-0.036	
					(0.089)		(0.047)		(0.089)		(0.104)	
Any crimes against person					0.026		0.013		0.014		-0.001	
					(0.018)		(0.009)		(0.015)		(0.013)	

	MB EYH				NB EYH				NB LA		NB EYH LA		
	Low-income		All		Low-income		All		Coef.	P	Coef.	P	
	Coef.	P	Coef.	P	Coef.	P	Coef.	P					
Any crimes against property					-0.014		-0.012	*			-0.018		0.014
					(0.013)		(0.007)				(0.015)		(0.016)
Any administration of justice					0.006		0.003				-0.016		0.014
					(0.014)		(0.008)				(0.012)		(0.015)
Any other crime code					-0.001		-0.001				-0.004		-0.006
					(0.008)		(0.005)				(0.009)		(0.008)
Any crime code traffic					0.016		0.000				-0.016		-0.011
					(0.018)		(0.010)				(0.013)		(0.015)
Any other federal statute					0.018	*	0.007				0.017		0.006
					(0.009)		(0.006)				(0.011)		(0.009)
Any conviction for crimes against person					0.015		0.006				-0.012		-0.003
					(0.014)		(0.007)				(0.012)		(0.011)
Any conviction for crimes against property					-0.002		-0.006				-0.022	*	0.013
					(0.012)		(0.007)				(0.011)		(0.016)
Any conviction related to administration of justice					-0.002		0.001				-0.016		0.004
					(0.011)		(0.006)				(0.011)		(0.014)
Any conviction for other crime codes					-0.003		-0.002				-0.004		-0.007
					(0.007)		(0.003)				(0.007)		(0.007)
Any conviction for crime code traffic					0.020		0.003				-0.006		-0.001
					(0.017)		(0.010)				(0.011)		(0.013)
Any conviction for other federal statute					0.015		0.003				0.009		0.005
					(0.009)		(0.005)				(0.008)		(0.006)
Students in Francophone Schools (NB Only)													
Any contact					-0.006		0.028	*			-0.001		0.018
					(0.022)		(0.015)				(0.023)		(0.025)
Any conviction					-0.005		0.009				0.015		0.008
					(0.013)		(0.009)				(0.017)		(0.014)
# of charges					-0.163		-0.005				-0.219		-0.118
					(0.186)		(0.104)				(0.177)		(0.170)

	MB EYH				NB EYH				NB LA		NB EYH LA	
	Low-income		All		Low-income		All		Coef.	P	Coef.	P
	Coef.	P	Coef.	P	Coef.	P	Coef.	P				
# of convictions					-0.122		-0.031		-0.165		-0.097	
					(0.125)		(0.074)		(0.121)		(0.121)	
Any crimes against person					0.004		0.008		0.002		0.035	**
					(0.012)		(0.007)		(0.010)		(0.016)	
Any crimes against property					-0.005		0.002		-0.011		0.011	
					(0.013)		(0.008)		(0.013)		(0.015)	
Any administration of justice					-0.022	*	-0.004		-0.011		-0.002	
					(0.012)		(0.007)		(0.014)		(0.014)	
Any other crime code					0.005		0.005		-0.003		-0.004	
					(0.010)		(0.005)		(0.007)		(0.006)	
Any crime code traffic					0.016		0.025	**	0.016		0.002	
					(0.018)		(0.011)		(0.015)		(0.014)	
Any other federal statute					0.004		0.009		-0.006		-0.007	
					(0.011)		(0.008)		(0.008)		(0.008)	
Any conviction for crimes against person					0.004		0.003		-0.004		0.023	*
					(0.008)		(0.004)		(0.008)		(0.013)	
Any conviction for crimes against property					-0.009		-0.003		-0.004		0.011	
					(0.010)		(0.007)		(0.012)		(0.012)	
Any conviction related to administration of justice					-0.018		-0.002		-0.017		-0.006	
					(0.012)		(0.007)		(0.013)		(0.014)	
Any conviction for other crime codes					0.008		0.006		0.000		-0.004	
					(0.010)		(0.005)		(0.006)		(0.004)	
Any conviction for crime code traffic					0.003		0.018	*	0.005		0.002	
					(0.016)		(0.010)		(0.014)		(0.014)	
Any conviction for other federal statute					0.004		0.008		-0.010		-0.007	
					(0.011)		(0.007)		(0.007)		(0.008)	

Table 23 Crime outcomes, 11 to 15 years following the intervention

	MB EYH				NB EYH				NB LA		NB EYH LA	
	Low-income		All		Low-income		All		Coef.	P	Coef.	P
	Coef.	P	Coef.	P	Coef.	P	Coef.	P				
LILE												
Any contact			-0.005		-0.019				0.016		0.001	
			(0.032)		(0.016)				(0.021)		(0.019)	
Any conviction			-0.011		-0.011	*		-0.001		0.002		
			(0.013)		(0.006)			(0.007)		(0.008)		
# of charges			0.714		-0.249	**		-0.153		-0.113		
			(0.499)		(0.125)			(0.175)		(0.175)		
# of convictions			0.257		-0.170	**		-0.128		-0.076		
			(0.170)		(0.085)			(0.111)		(0.114)		
Any crimes against person			0.010		-0.009			-0.002		0.000		
			(0.024)		(0.012)			(0.013)		(0.014)		
Any crimes against property			0.021		-0.017	**		0.007		0.005		
			(0.022)		(0.008)			(0.012)		(0.012)		
Any administration of justice			-0.024		-0.014			0.000		0.002		
			(0.030)		(0.010)			(0.011)		(0.013)		
Any other crime code			0.013		-0.007			-0.004		0.001		
			(0.023)		(0.004)			(0.007)		(0.007)		
Any crime code traffic			-0.013		-0.006			-0.001		-0.002		
			(0.017)		(0.008)			(0.009)		(0.010)		
Any other federal statute			0.025	**	-0.002			0.013	*	0.002		
			(0.012)		(0.005)			(0.008)		(0.006)		
Any conviction for crimes against person			0.021		-0.018	**		-0.009		-0.004		
			(0.015)		(0.009)			(0.009)		(0.011)		
Any conviction for crimes against property			0.025	**	-0.010			0.007		0.009		
			(0.012)		(0.006)			(0.010)		(0.010)		
Any conviction related to administration of justice			0.010		-0.008			-0.005		-0.009		
			(0.013)		(0.009)			(0.011)		(0.009)		

	MB EYH				NB EYH				NB LA		NB EYH LA	
	Low-income		All		Low-income		All		Coef.	P	Coef.	P
	Coef.	P	Coef.	P	Coef.	P	Coef.	P				
Any conviction for other crime codes			0.017				-0.005		-0.001		0.002	
			(0.018)				(0.003)		(0.005)		(0.005)	
Any conviction for crime code traffic			-0.001				-0.002		0.001		0.002	
			(0.012)				(0.008)		(0.008)		(0.009)	
Any conviction for other federal statute			0.017	*			-0.004		0.009		0.005	
			(0.009)				(0.003)		(0.007)		(0.006)	
FGF												
Any contact	-0.008		0.010		-0.013		-0.009		0.014		0.019	
	(0.046)		(0.027)		(0.019)		(0.017)		(0.024)		(0.023)	
Any conviction	-0.019		-0.009		-0.009		-0.009		0.002		0.010	
	(0.025)		(0.011)		(0.008)		(0.007)		(0.010)		(0.012)	
# of charges	0.978		0.695	*	-0.240		-0.101		-0.128		-0.010	
	(0.629)		(0.400)		(0.165)		(0.126)		(0.197)		(0.228)	
# of convictions	0.269		0.253	*	-0.125		-0.082		-0.082		0.037	
	(0.213)		(0.141)		(0.099)		(0.072)		(0.115)		(0.151)	
Any crimes against person	0.021		0.016		0.000		-0.004		0.017		0.027	
	(0.034)		(0.021)		(0.014)		(0.012)		(0.015)		(0.018)	
Any crimes against property	0.036	*	0.025	*	-0.010		-0.001		0.017		0.013	
	(0.019)		(0.014)		(0.011)		(0.009)		(0.013)		(0.014)	
Any administration of justice	-0.017		-0.016		-0.001		-0.003		-0.006		0.006	
	(0.040)		(0.025)		(0.012)		(0.011)		(0.011)		(0.015)	
Any other crime code	0.018		0.012		-0.010	*	-0.001		-0.003		0.004	
	(0.026)		(0.016)		(0.006)		(0.006)		(0.008)		(0.010)	
Any crime code traffic	-0.013		-0.009		-0.009		0.006		-0.010		0.000	
	(0.029)		(0.015)		(0.009)		(0.008)		(0.008)		(0.011)	
Any other federal statute	0.009		0.013		0.003		-0.002		0.005		0.004	
	(0.011)		(0.009)		(0.009)		(0.006)		(0.008)		(0.009)	
Any conviction for crimes against person	0.013		0.017		-0.011		-0.016		-0.001		0.011	
	(0.021)		(0.013)		(0.012)		(0.011)		(0.010)		(0.014)	

	MB EYH				NB EYH				NB LA		NB EYH LA	
	Low-income		All		Low-income		All		Coef.	P	Coef.	P
	Coef.	P	Coef.	P	Coef.	P	Coef.	P				
Any conviction for crimes against property	0.027		0.019	**	0.000		0.000		0.013		0.015	
	(0.017)		(0.009)		(0.008)		(0.006)		(0.011)		(0.011)	
Any conviction related to administration of justice	0.018		0.016	*	0.004		0.000		-0.006		-0.001	
	(0.014)		(0.009)		(0.012)		(0.010)		(0.009)		(0.011)	
Any conviction for other crime codes	0.018		0.012		-0.002		-0.002		0.002		0.009	
	(0.026)		(0.013)		(0.002)		(0.002)		(0.005)		(0.008)	
Any conviction for crime code traffic	0.001		0.004		-0.006		-0.001		-0.008		0.002	
	(0.026)		(0.012)		(0.009)		(0.007)		(0.008)		(0.011)	
Any conviction for other federal statute	0.000		0.008		-0.002		-0.005		0.007		0.006	
	(0.000)		(0.008)		(0.005)		(0.004)		(0.008)		(0.009)	
Males												
Any contact	-0.018		0.007		-0.055	*	-0.024		-0.017		-0.023	
	(0.046)		(0.022)		(0.030)		(0.017)		(0.030)		(0.031)	
Any conviction	-0.004		-0.004		-0.019	*	-0.014	*	0.010		0.002	
	(0.019)		(0.007)		(0.010)		(0.007)		(0.013)		(0.010)	
# of charges	0.417		0.400		-0.686	**	-0.258	**	-0.556	*	-0.381	
	(0.535)		(0.298)		(0.277)		(0.116)		(0.297)		(0.329)	
# of convictions	0.020		0.104		-0.402	**	-0.169	**	-0.314	*	-0.185	
	(0.130)		(0.114)		(0.169)		(0.066)		(0.181)		(0.207)	
Any crimes against person	-0.023		-0.003		-0.023		-0.024	**	-0.021		-0.003	
	(0.041)		(0.018)		(0.023)		(0.011)		(0.022)		(0.025)	
Any crimes against property	0.032	*	0.016		-0.036	**	-0.012		-0.026		-0.009	
	(0.019)		(0.013)		(0.016)		(0.009)		(0.018)		(0.021)	
Any administration of justice	-0.018		0.002		-0.021		-0.017	*	-0.027		-0.014	
	(0.039)		(0.018)		(0.019)		(0.010)		(0.018)		(0.023)	
Any other crime code	0.004		0.000		-0.026	**	-0.005		-0.032	**	-0.006	
	(0.033)		(0.016)		(0.011)		(0.006)		(0.013)		(0.015)	
Any crime code traffic	-0.014		0.008		-0.038	**	-0.008		0.003		-0.016	
	(0.020)		(0.012)		(0.015)		(0.009)		(0.019)		(0.017)	

	MB EYH				NB EYH				NB LA		NB EYH LA	
	Low-income		All		Low-income		All		Coef.	P	Coef.	P
	Coef.	P	Coef.	P	Coef.	P	Coef.	P				
Any other federal statute	0.027 (0.018)		0.018 (0.009)	**	-0.009 (0.013)		-0.002 (0.008)		-0.004 (0.011)		0.001 (0.011)	
Any conviction for crimes against person	-0.012 (0.024)		0.011 (0.013)		-0.026 (0.016)		-0.024 (0.009)	***	-0.013 (0.018)		-0.011 (0.018)	
Any conviction for crimes against property	0.013 (0.012)		0.015 (0.008)	**	-0.021 (0.012)	*	-0.008 (0.006)		-0.008 (0.016)		0.004 (0.016)	
Any conviction related to administration of justice	0.009 (0.016)		0.009 (0.011)		-0.023 (0.017)		-0.012 (0.008)		-0.033 (0.016)	**	-0.022 (0.020)	
Any conviction for other crime codes	-0.005 (0.031)		-0.009 (0.013)		-0.020 (0.010)	**	-0.006 (0.005)		-0.024 (0.011)	**	-0.001 (0.014)	
Any conviction for crime code traffic	0.002 (0.014)		0.008 (0.008)		-0.028 (0.015)	*	-0.009 (0.008)		0.011 (0.017)		-0.003 (0.016)	
Any conviction for other federal statute	0.008 (0.010)		0.010 (0.006)	*	-0.011 (0.010)		-0.005 (0.006)		-0.002 (0.011)		0.007 (0.011)	
Females												
Any contact	-0.023 (0.023)		-0.011 (0.016)		-0.012 (0.015)		-0.001 (0.010)		0.027 (0.021)		-0.005 (0.016)	
Any conviction	-0.009 (0.012)		-0.006 (0.007)		-0.009 (0.007)		-0.002 (0.005)		-0.007 (0.006)		-0.004 (0.009)	
# of charges	-0.103 (0.106)		0.172 (0.174)		-0.136 (0.117)		-0.060 (0.056)		0.111 (0.142)		-0.019 (0.098)	
# of convictions	-0.009 (0.012)		0.086 (0.076)		-0.120 (0.115)		-0.063 (0.055)		0.007 (0.115)		-0.038 (0.083)	
Any crimes against person	0.000 (0.000)		0.008 (0.008)		0.000 (0.010)		0.003 (0.007)		0.015 (0.012)		-0.005 (0.006)	
Any crimes against property	-0.014 (0.017)		0.003 (0.006)		-0.012 (0.007)	*	-0.006 (0.004)		0.028 (0.013)	**	0.012 (0.012)	
Any administration of justice	-0.014 (0.019)		-0.008 (0.007)		-0.005 (0.009)		0.004 (0.006)		0.008 (0.012)		0.000 (0.009)	

	MB EYH				NB EYH				NB LA		NB EYH LA	
	Low-income		All		Low-income		All		Coef.	P	Coef.	P
	Coef.	P	Coef.	P	Coef.	P	Coef.	P				
Any other crime code	0.000		0.003		-0.002		-0.001		0.011		-0.001	
	(0.000)		(0.003)		(0.002)		(0.001)		(0.008)		(0.002)	
Any crime code traffic	-0.009		-0.008		-0.001		0.000		-0.007		-0.008	
	(0.012)		(0.008)		(0.010)		(0.005)		(0.008)		(0.007)	
Any other federal statute	0.000		-0.005		-0.002		-0.002		0.015	*	0.004	
	(0.000)		(0.006)		(0.002)		(0.001)		(0.009)		(0.005)	
Any conviction for crimes against person	0.000		0.001		-0.001		-0.002		0.003		-0.002	
	(0.000)		(0.005)		(0.009)		(0.005)		(0.008)		(0.006)	
Any conviction for crimes against property	0.000		0.003		-0.012	*	-0.006		0.009		0.010	
	(0.000)		(0.003)		(0.007)		(0.004)		(0.010)		(0.012)	
Any conviction related to administration of justice	0.000		0.001		-0.006		-0.001		0.012		-0.005	
	(0.000)		(0.005)		(0.006)		(0.005)		(0.010)		(0.004)	
Any conviction for other crime codes	0.000		0.000		-0.002		-0.001		0.009		-0.001	
	(0.000)		(0.000)		(0.002)		(0.001)		(0.008)		(0.002)	
Any conviction for crime code traffic	-0.009		-0.004		0.005		0.002		-0.006		-0.004	
	(0.012)		(0.007)		(0.008)		(0.004)		(0.004)		(0.005)	
Any conviction for other federal statute	0.000		0.000		0.000		-0.001		0.013		0.005	
	(0.000)		(0.000)		(0.000)		(0.001)		(0.008)		(0.004)	
Students in Anglophone Schools (NB Only)												
Any contact					-0.014		0.002		0.018		-0.006	
					(0.021)		(0.012)		(0.025)		(0.022)	
Any conviction					-0.013		-0.004		-0.002		-0.007	
					(0.008)		(0.006)		(0.009)		(0.010)	
# of charges					-0.278	*	-0.106		-0.136		-0.070	
					(0.167)		(0.078)		(0.212)		(0.208)	
# of convictions					-0.197		-0.099	*	-0.142		-0.073	
					(0.120)		(0.056)		(0.145)		(0.145)	
Any crimes against person					0.000		-0.005		0.003		0.004	
					(0.017)		(0.010)		(0.017)		(0.015)	

	MB EYH				NB EYH				NB LA		NB EYH LA	
	Low-income		All		Low-income		All		Coef.	P	Coef.	P
	Coef.	P	Coef.	P	Coef.	P	Coef.	P				
Any crimes against property					-0.022	**	-0.006		0.006		0.007	
					(0.010)		(0.006)		(0.015)		(0.015)	
Any administration of justice					-0.004		-0.001		-0.003		0.003	
					(0.014)		(0.008)		(0.013)		(0.016)	
Any other crime code					-0.012	**	-0.002		-0.010		0.000	
					(0.006)		(0.004)		(0.009)		(0.009)	
Any crime code traffic					-0.010		0.001		0.002		-0.009	
					(0.011)		(0.007)		(0.011)		(0.012)	
Any other federal statute					0.002		0.002		0.014	*	0.008	
					(0.007)		(0.005)		(0.008)		(0.007)	
Any conviction for crimes against person					-0.006		-0.010		-0.002		-0.003	
					(0.012)		(0.007)		(0.012)		(0.012)	
Any conviction for crimes against property					-0.014		-0.005		-0.002		0.009	
					(0.009)		(0.005)		(0.012)		(0.013)	
Any conviction related to administration of justice					-0.008		-0.002		-0.004		-0.009	
					(0.011)		(0.006)		(0.012)		(0.012)	
Any conviction for other crime codes					-0.007		-0.003		-0.004		0.000	
					(0.005)		(0.003)		(0.007)		(0.007)	
Any conviction for crime code traffic					-0.003		0.000		0.007		-0.002	
					(0.010)		(0.006)		(0.010)		(0.011)	
Any conviction for other federal statute					-0.004		-0.002		0.008		0.008	
					(0.004)		(0.004)		(0.008)		(0.007)	
Students in Francophone Schools (NB Only)												
Any contact					-0.042	***	-0.032	***	-0.017		-0.002	
					(0.015)		(0.010)		(0.017)		(0.021)	
Any conviction					-0.011	*	-0.016	***	0.000		0.015	
					(0.006)		(0.005)		(0.008)		(0.012)	
# of charges					-0.475	**	-0.231	**	-0.349	*	-0.290	
					(0.197)		(0.094)		(0.184)		(0.222)	

	MB EYH				NB EYH				NB LA		NB EYH LA	
	Low-income		All		Low-income		All		Coef.	P	Coef.	P
	Coef.	P	Coef.	P	Coef.	P	Coef.	P				
# of convictions					-0.265	**	-0.131	**	-0.191	*	-0.130	
					(0.118)		(0.056)		(0.110)		(0.135)	
Any crimes against person					-0.020	**	-0.014	***	-0.018		-0.005	
					(0.009)		(0.005)		(0.013)		(0.015)	
Any crimes against property					-0.021	**	-0.015	***	-0.007		0.001	
					(0.008)		(0.005)		(0.011)		(0.015)	
Any administration of justice					-0.021	**	-0.015	**	-0.019	*	-0.014	
					(0.010)		(0.006)		(0.011)		(0.013)	
Any other crime code					-0.011	*	-0.006	**	-0.006		-0.007	
					(0.006)		(0.003)		(0.006)		(0.007)	
Any crime code traffic					-0.029	***	-0.010		-0.008		-0.006	
					(0.010)		(0.007)		(0.014)		(0.012)	
Any other federal statute					-0.010		-0.010	*	-0.007		-0.006	
					(0.009)		(0.006)		(0.009)		(0.010)	
Any conviction for crimes against person					-0.017	*	-0.013	***	-0.019	*	-0.002	
					(0.009)		(0.004)		(0.011)		(0.013)	
Any conviction for crimes against property					-0.017	**	-0.011	**	-0.001		0.001	
					(0.008)		(0.005)		(0.010)		(0.013)	
Any conviction related to administration of justice					-0.019	**	-0.013	***	-0.021	***	-0.010	
					(0.008)		(0.005)		(0.008)		(0.010)	
Any conviction for other crime codes					-0.011	*	-0.006	**	-0.010	*	-0.007	
					(0.006)		(0.003)		(0.005)		(0.007)	
Any conviction for crime code traffic					-0.023	***	-0.009		-0.010		0.001	
					(0.008)		(0.006)		(0.010)		(0.012)	
Any conviction for other federal statute					-0.002		-0.006		0.002		0.003	
					(0.007)		(0.005)		(0.007)		(0.008)	

OTTAWA • VANCOUVER • CALGARY • HAMILTON

MONTREAL • REGINA • TORONTO • WINNIPEG

www.srdc.org • 1 866 896 7732 • info@srdc.org

